

PLAT AND RECORD

107
VOL. 6

Of a Survey on Section 15 T 4 R 12 E. of the 4 P. M. in FULTON Township
Rock County, Wisconsin, made DEC the 19 80

I hereby certify that the following is a correct record of said survey as made by me.

COUNTY BUILDING
CITY OF JANESVILLE



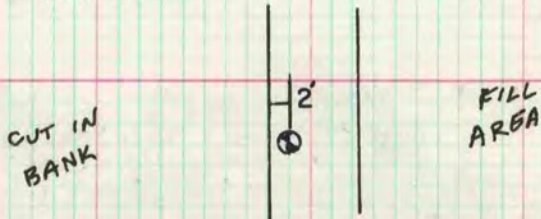
NE COR SEC 15

MICROFILMED

FOUND CONCRETE NAIL & 1" X 6" IP UNDER THE NAIL.
AGREED WITH TIES. REPLACED WITH ALUM MON.

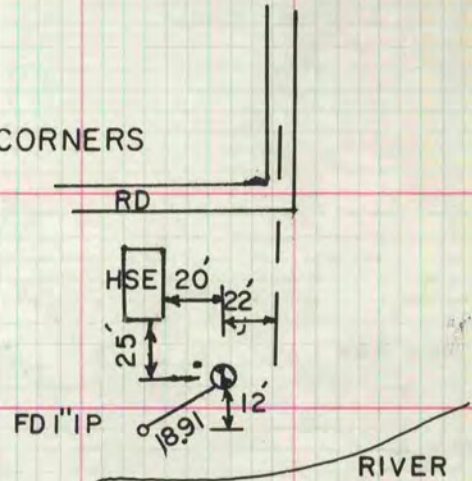
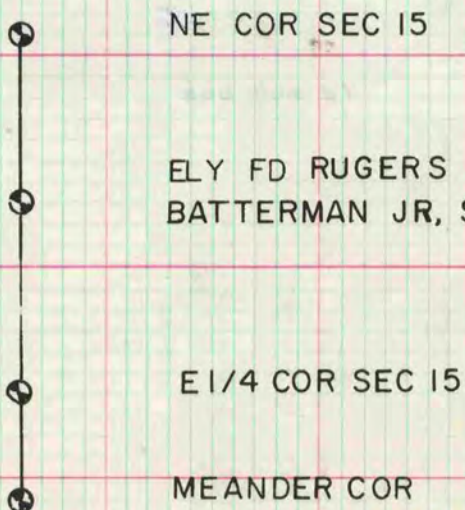
E 1/4 COR SEC 15

DUG A 3' X 3' HOLE 2.5' DEEP & FOUND NOTHING. CORNER
WAS PROBABLY DESTROYED BY ROAD CONSTRUCTION. SET
ALUM MON ON LINE WITH THE NE & E 1/16 OF THE NE 1/4 CORNERS
OF SEC 15



MEANDER COR SOUTH OF THE E 1/4 COR OF SEC 15

SET ALUM MON ON LINE WITH THE NE & E 1/4 CORNERS
OF SEC 15 AT RUGERS REC DISTANCE



ELY FD RUGERS STONE (SEE BADGER HTS SUB),
BATTERMAN JR, SET 1" IP, FD 1" IP