

PLAT AND RECORD

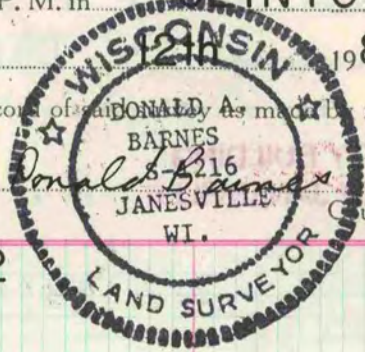
103

VOL. 6

Of a Survey on Section 12 T 1 R 14 E. of the 4 P. M. in CLINTON Township
Rock County, Wisconsin, made DEC. the 21 1980

I hereby certify that the following is a correct record of said DONALD A. BARNES As made by me.

COUNTY BUILDING
CITY OF JANESVILLE

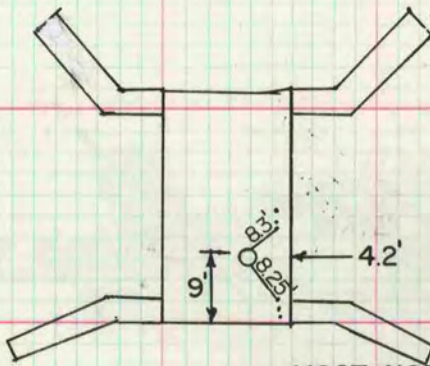


SE COR SEC 12

DRILLED 1 1/2" HOLE 0.2' DEEP



CONCRETE
BRIDGE



MICROFILMED

MOST SOUTHERNLY CHISELED BOLT
OF THE 2ND NORTHERN RAIL
SUPPORT

MOST NORTHERNLY CHISELED BOLT OF THE
MOST SOUTHERNLY RAIL SUPPORT