

Of a Survey on Section \_\_\_\_\_ T. \_\_\_\_\_ R. \_\_\_\_\_ E. of the 4 P. M. in \_\_\_\_\_ Township

Rock County, Wisconsin, made \_\_\_\_\_ the \_\_\_\_\_ 19 \_\_\_\_\_

I hereby certify that the following is a correct record of said survey as made by me.

COUNTY BUILDING  
CITY OF JANESVILLE

County Surveyor.

MICROFILMED

MICROFILMED

**PRESERVATION OF LANDMARKS**

SECTION 59,635(7) WISCONSIN STATUTES

COUNTY Rock

TOWN Harmony

HIGHWAY S.T.H. #11

SECTION NO. 32

T. 32 N., 3 R. 13 E.

TYPE OF LANDMARK Chisled cross in conc. Pvt.

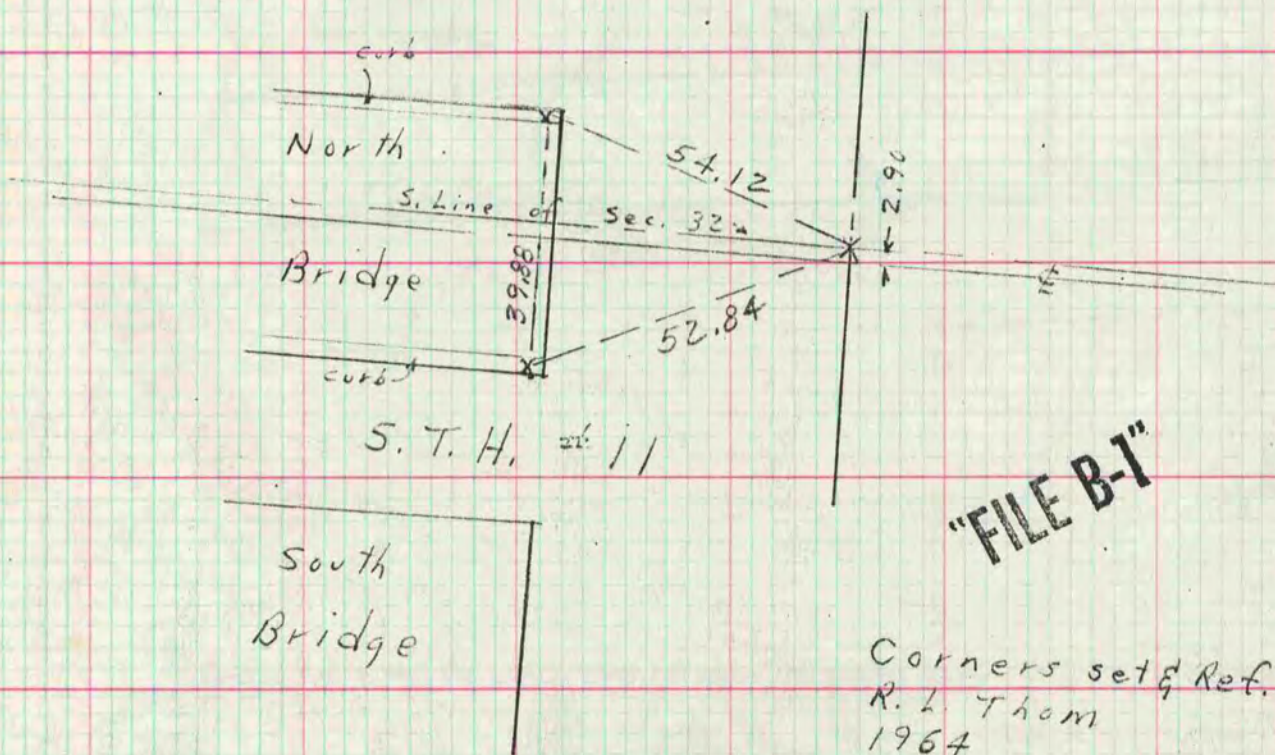
LOCATION INDICATED ON SKETCH X

BOOK \_\_\_\_\_ PAGE \_\_\_\_\_



LOCATION SKETCH

X - chisled cross in conc.



<sup>checked</sup>  
Located and referenced by: H. Combs - T. Kerwin, 1964.  
Field notes recorded 4-22, 1964 in Book 129 on Page 46  
Copy sent to County Surveyor's Office \_\_\_\_\_, 19\_\_\_\_\_  
Drawn by: \_\_\_\_\_