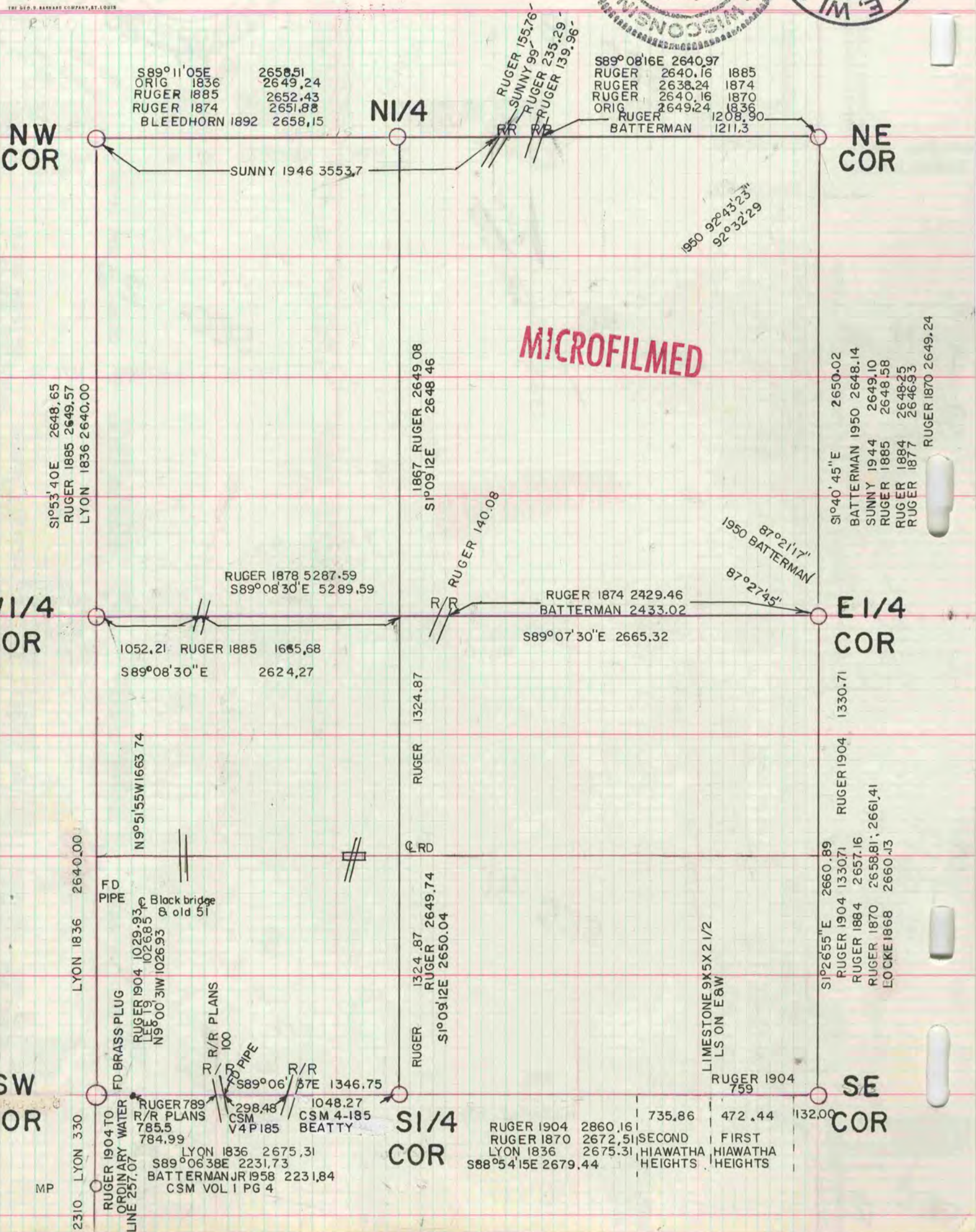
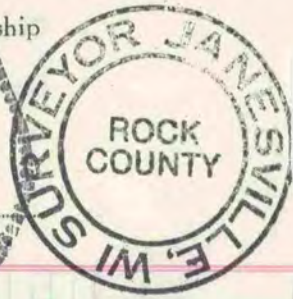


# PLAT AND RECORD

Of a Survey on Section **24** T **3** R **12** E. of the 4 P. M. in **JANESVILLE** Township  
 Rock County, Wisconsin, made SEP the 22

I hereby certify that the following is a correct record of said survey as made by me

*Donald Barnes*



**MICROFILMED**

**NW COR**

**NE COR**

**SW COR**

**SE COR**

**N1/4**

**S1/4 COR**

**E1/4 COR**

**SW COR**

**SE COR**

S89°11'05E 2658.51  
 ORIG 1836 2649.24  
 RUGER 1885 2652.43  
 RUGER 1874 2651.88  
 BLEEDHORN 1892 2658.15

S89°08'16E 2640.97  
 RUGER 2640.16 1885  
 RUGER 2638.24 1874  
 RUGER 2640.16 1870  
 ORIG 2649.24 1836  
 RUGER BATTERMAN 1208.90 1211.3

S1°40'45"E 2650.02  
 BATTERMAN 1950 2648.14  
 SUNNY 1944 2649.10  
 RUGER 1885 2648.58  
 RUGER 1884 2648.25  
 RUGER 1877 2646.93  
 RUGER 1870 2649.24

S1°26'55"E 2660.89  
 RUGER 1904 1330.71  
 RUGER 1884 2657.16  
 RUGER 1870 2658.81  
 EOCKE 1868 2660.43

RUGER 1904 2860.16  
 RUGER 1870 2672.51  
 LYON 1836 2675.31  
 S88°54'15E 2679.44

735.86  
 472.44  
 132.00

SECOND FIRST  
 HIAWATHA HIAWATHA  
 HEIGHTS HEIGHTS

RUGER 1878 5287.59  
 S89°08'30"E 5289.59

RUGER 1874 2429.46  
 BATTERMAN 2433.02

1052.21 RUGER 1885 1665.68  
 S89°08'30"E 2624.27

S89°07'30"E 2665.32

LYON 1836 2640.00  
 N9°51'55W 1663.74

1867 RUGER 2649.08  
 S1°09'12E 2648.46

RUGER 1324.87

RUGER 1324.87  
 RUGER 2649.74  
 S1°09'12E 2650.04

LIMESTONE 9X5X2 1/2  
 LS ON E&W

RUGER 1904 759

FD PIPE  
 Black bridge & old 51

RUGER 1904 1029.93  
 LEF 19 1026.85  
 N9°00'31W 1026.93

R/R PLANS  
 R/R 100  
 FD PIPE

S89°06'37E 1346.75

RUGER 789 785.5  
 R/R PLANS 784.99  
 LYON 1836 2675.31  
 S89°06'38E 2231.73  
 BATTERMAN JR 1958 2231.84  
 CSM VOL I PG 4

RUGER 1904 TO  
 ORDINARY WATER  
 LINE 257.07

MP