

PLAT AND RECORD

317
VOL. 6

Of a Survey on Section 31 T. 3 R. 11 E. of the CENTER Township

Rock County, Wisconsin, made by DONALD A. BARNES, 19

I hereby certify that the following is a correct record of said survey as made by me.
COUNTY BUILDING
CITY OF JANESVILLE



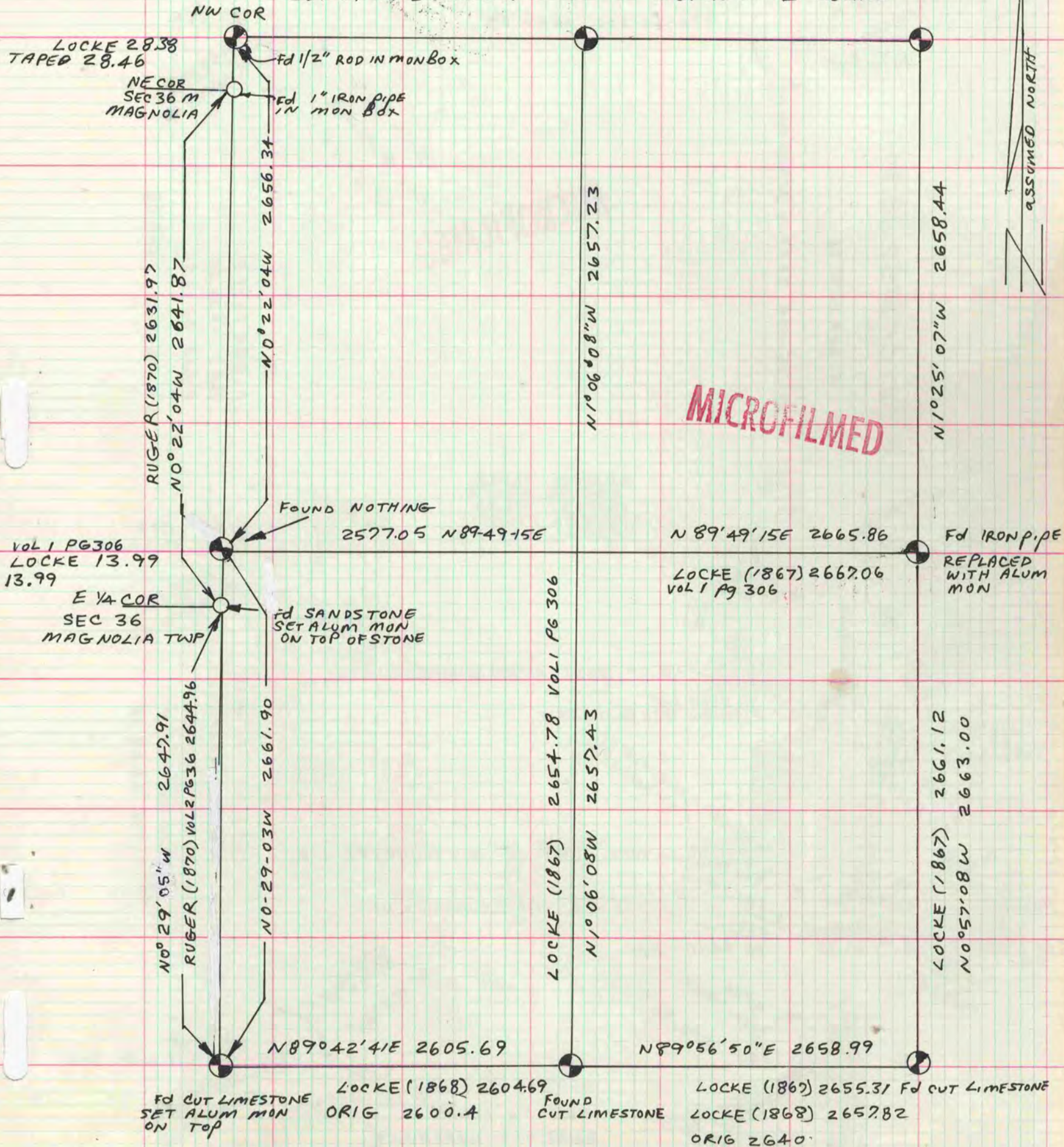
County Surveyor.

VOID PAGE 582 VOL 5.

NEW BEARINGS AND DISTANCES ARE COMPUTED FROM NEW ADJUSTMENT. THE WEST LINE WAS MISCALCULATED IN VOL 5 PAGE 582

S89°09'44"E 2543.07

N89°48'17"E 2651.15



MICROFILMED

ASSUMED NORTH