

PLAT AND RECORD

137

VOL. 6

Of a Survey on Section **33** T **2** R **11** E. of the 4 P. M. in **PLYMOUTH** Township
Rock County, Wisconsin, made **SEPTEMBER 8** 19**79**

I hereby certify that the following is a correct record of said survey as made by me.

COUNTY BUILDING
CITY OF JANESVILLE

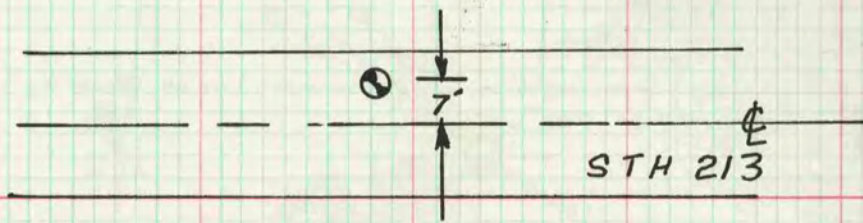


County Surveyor.

N 1/4 COR SEC 33

SET ALUM MON AT PROPORTIONATE MEASUREMENT FROM THE NE & NW CORNER OF SECTION 33. USED RUGER'S PRORATED DISTANCES FROM THE CENTER OF THE SECTION TO CONTROL THE N/S POSITION. LOCKE'S REMONUMENTATION NOTES STATES THE CORNER WAS IN THE CENTER OF THE OLD ROAD AND THE VAR INDICATES THE CORNER IS NOT ON A STRAIGHT LINE BETWEEN THE NE & NW CORNERS OF SECTION 33. THE TERRIAN INDICATES A LARGE ROAD CUT, DUG 36" DEEP AND FOUND SAND BUT NOT THE OLD ROAD BED AS FOUND AT THE NW & NE CORNERS OF SECTION 33. IF PLACED ON A STRAIGHT LINE THE CORNER WOULD BE FURTHER SOUTH BY 5'. IF SET AT THE CENTERLINE THE DIFFERENCE IN THE BEARING BETWEEN THE THE NW AND THE NE CORNER IS 0°05'28". THE RECORD DIFFERENCE IN BEARINGS ARE:

RUGER (1871)	0°18'
LOCKE (1868)	0°10'
AS SET	0°12'33"
IF AT $\frac{1}{2}$ RD	0°05'28"



MICROFILMED