

PLAT AND RECORD

309
VOL. 6

Of a Survey on Section _____ T _____ R _____ E. of the 4 P. M. in _____ Township

Rock County, Wisconsin, made _____ the _____ 19 _____

I hereby certify that the following is a correct record of said survey as made by me.

COUNTY BUILDING
CITY OF JANESVILLE

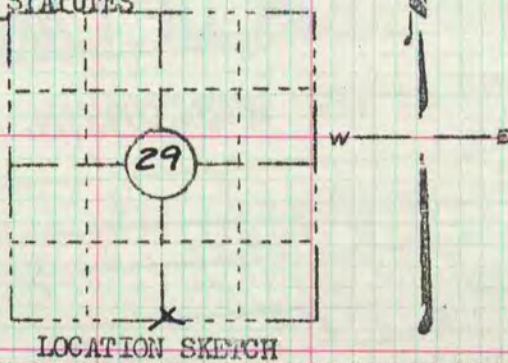
County Surveyor.

MICROFILMED

PRESERVATION OF LANDMARKS

SECTION 59.635(7) WISCONSIN STATUTES

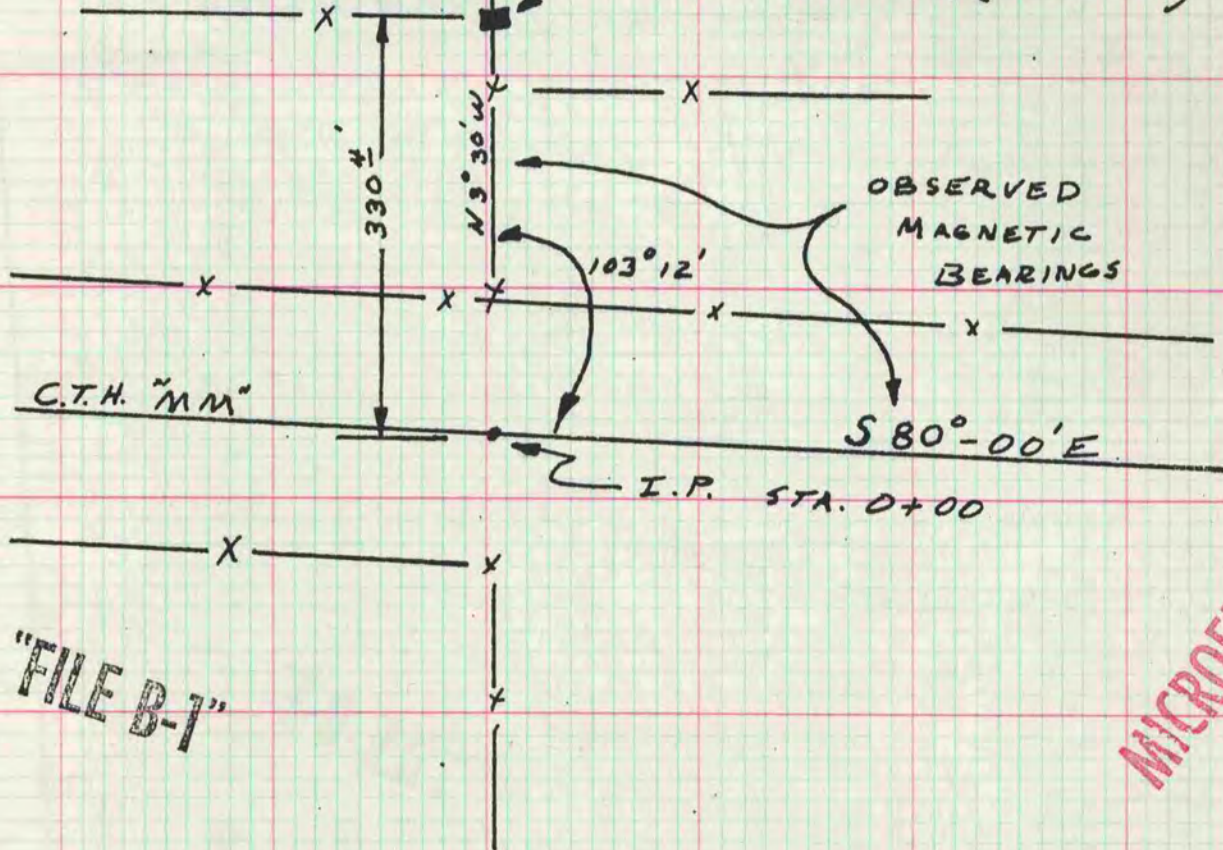
COUNTY ROCK
 TOWN HARMONY
 HIGHWAY C.T.H. "MM"
 SECTION NO. 29
 T. 3 N., R. 13 E.
 TYPE OF LANDMARK STONE MONUMENT
 LOCATION INDICATED ON SKETCH X



is. Gels
COORDINATES

N 251,613.75
E 2,273,455.51

STONE MONUMENT
MARKED 5 1/4 (CHISELED)



"FILE B-1"

MICROFILMED

This space for copy of field notes or ties to the above described landmark

Field notes or records filed in book no. E 0-0 (3)
 at the STATE HIGHWAY COMMISSION, DIST. # 1 office.
 City of MADISON, DANE County.
 Located or established by J. M. HORSFALL, MARCH, 1957
 Title

County Clerk's Office ROCK County, Wis.)ss
 Received for record APRIL 26, 1957

Walter Lind...

APRIL 26 1957