

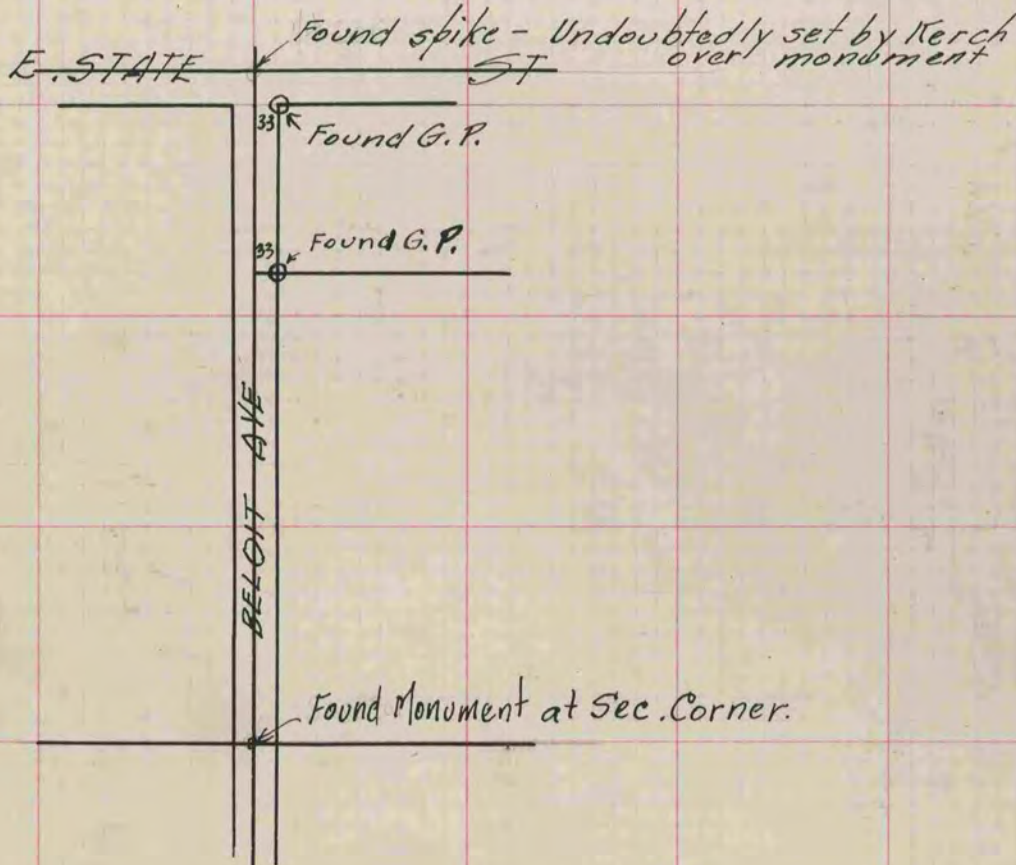
# PLAT AND RECORD

Of a Survey on Section 1 T 2 R 12 E. of the 4 P. M. in Rock Township

Rock County, Wisconsin, made August the \_\_\_\_\_ 1919

I hereby certify that the following is a correct record of said survey as made by me.  
**COUNTY BUILDING  
CITY OF JANESVILLE**

W. B. Berman  
County Surveyor.



Chain 5. from spike & Beloit Ave + 1/4 cor. at E. State St.

- 53.62 Spike G.P. 33ft. E. from E. Beloit Ave.
- 54.44 Spike
- 581.74 Spike 33ft E. of Gaspipe
- 584.74 "

This survey was called off

# 249  
B8 P.50