

470
VOL. 5

PLAT AND RECORD

COUNTY BUILDING
CITY OF JANESVILLE

Of a Survey on Section 18 T 3 R 13 E. of the 4 P. M. in HARMONY Township

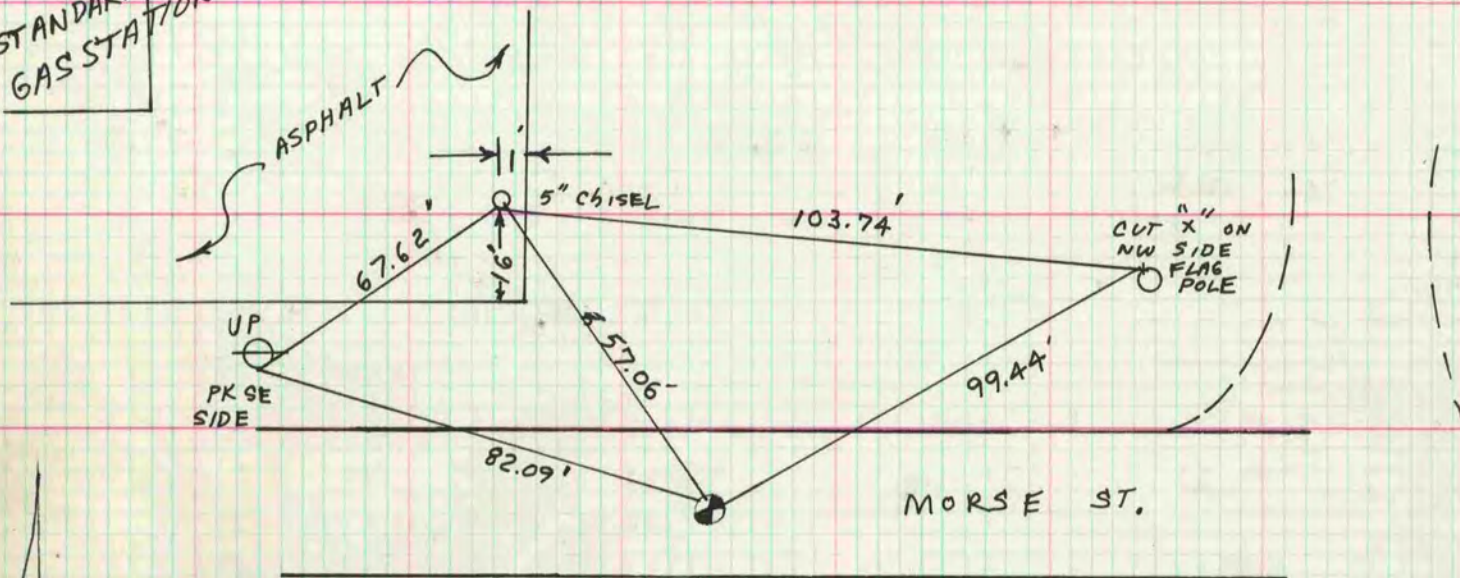
Rock County, Wisconsin, made AUGUST 11 1978

I hereby certify that the following is a correct record of said survey as made by me.



E 1/4 COR SEC 18

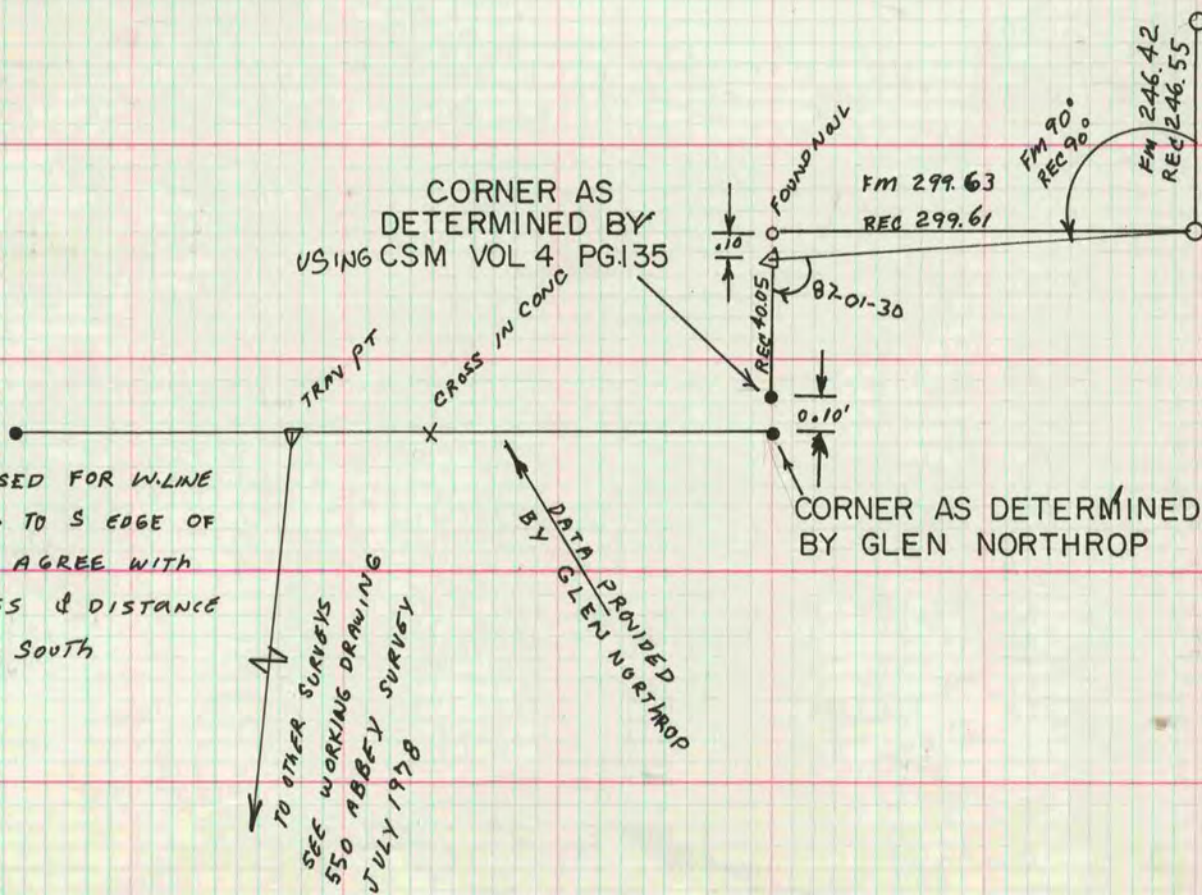
STANDARD
GAS STATION



SET ALUM. MON. MIDWAY BETWEEN LOCATION AS DETERMINED BY GLEN NORTHROP AND CSM 4-135

MICROFILMED

CORNER AS DETERMINED BY USING CSM VOL 4 PG.135



2" IP USED FOR W-LINE BUT CAME TO S EDGE OF IRON TO AGREE WITH CHIS. CROSS & DISTANCE FROM THE SOUTH

TO OTHER SURVEYS SEE WORKING DRAWING 550 ABBEY SURVEY JULY 1978