

# PLAT AND RECORD

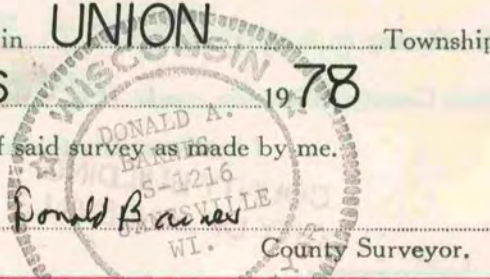
VOL. 5

Of a Survey on Section 2, 36 T 4 R 10 E. of the 4 P. M. in UNION Township

Rock County, Wisconsin, made APRIL the 26 1978

I hereby certify that the following is a correct record of said survey as made by me.

COUNTY BUILDING  
CITY OF JANESVILLE

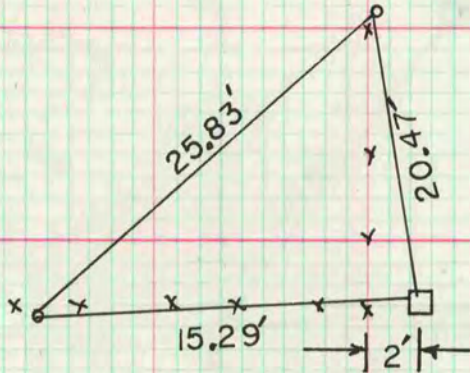


## N1/4 COR SEC 2 T4N R10E

FD. CUT STONE MON. 1.5' DEEP MARCH 19, 1973  
 REF. PK NAILS 5' W & 5' S WITH SHINERS  
 DATA COPIED FROM COUNTY SURVEYORS  
 FIELD BOOK NO. 163 PG 103

### SW CORNER OF SEC 36

DUG & FOUND CUT LIMESTONE 1' DEEP. PLACED IP HORIZONTALLY NEXT TO STONE.



o 1 1/4" X 24" IP

MICROFILMED