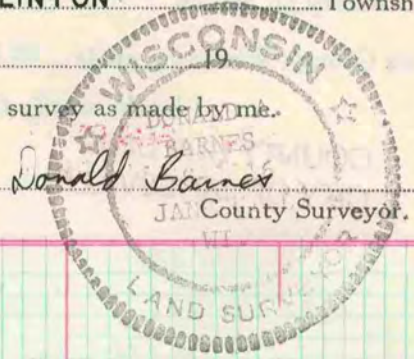


Of a Survey on Section 24 T. 1. R. 14 E. of the 4 P. M. in CLINTON Township
Rock County, Wisconsin, made the

I hereby certify that the following is a correct record of said survey as made by me.

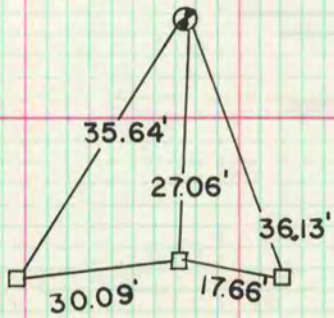
COUNTY BUILDING
CITY OF JANESVILLE



NE COR. SEC. 24 T. 1. N. R. 14 E.

TIES SUPPLIED BY WI. STATE HWY. COMMISSION

- CONC. MON. WITH A BRASS DISC
- CONC. MON.



MICROFILMED