

# PLAT AND RECORD

153  
V-4

COUNTY BUILDING  
CITY OF JANESVILLE

Of a Survey on Section 28 T 3 N, R 13 E. of the 4 P. M. in HARMONY Township

Rock County, Wisconsin, made JULY the 15th. 1963

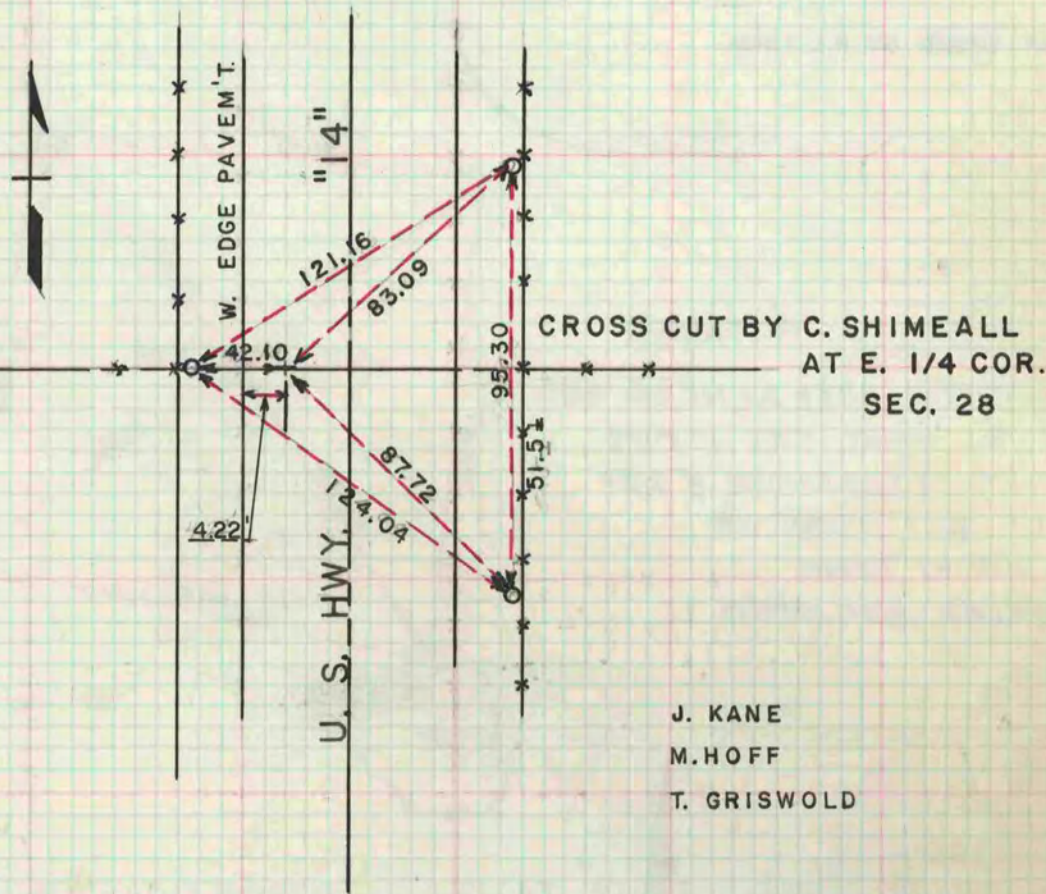
I hereby certify that the following is a correct record of said survey as made by me.

**MICROFILMED**

*R. B. Stump*

County Surveyor.

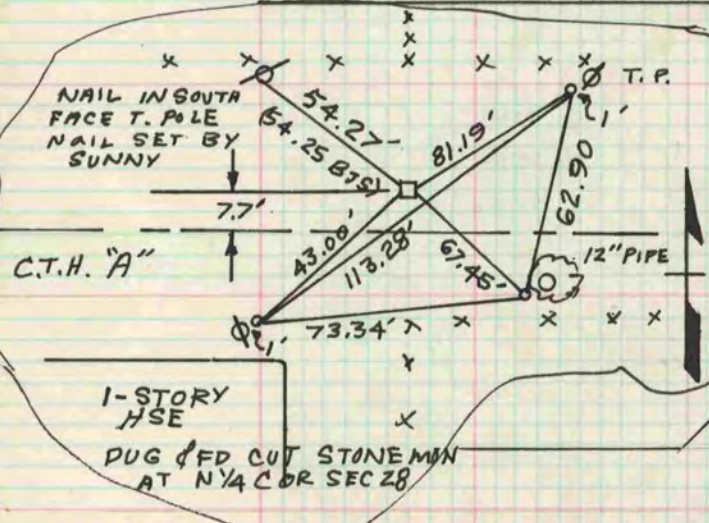
THE GEO. D. BARNARD COMPANY, ST. LOUIS



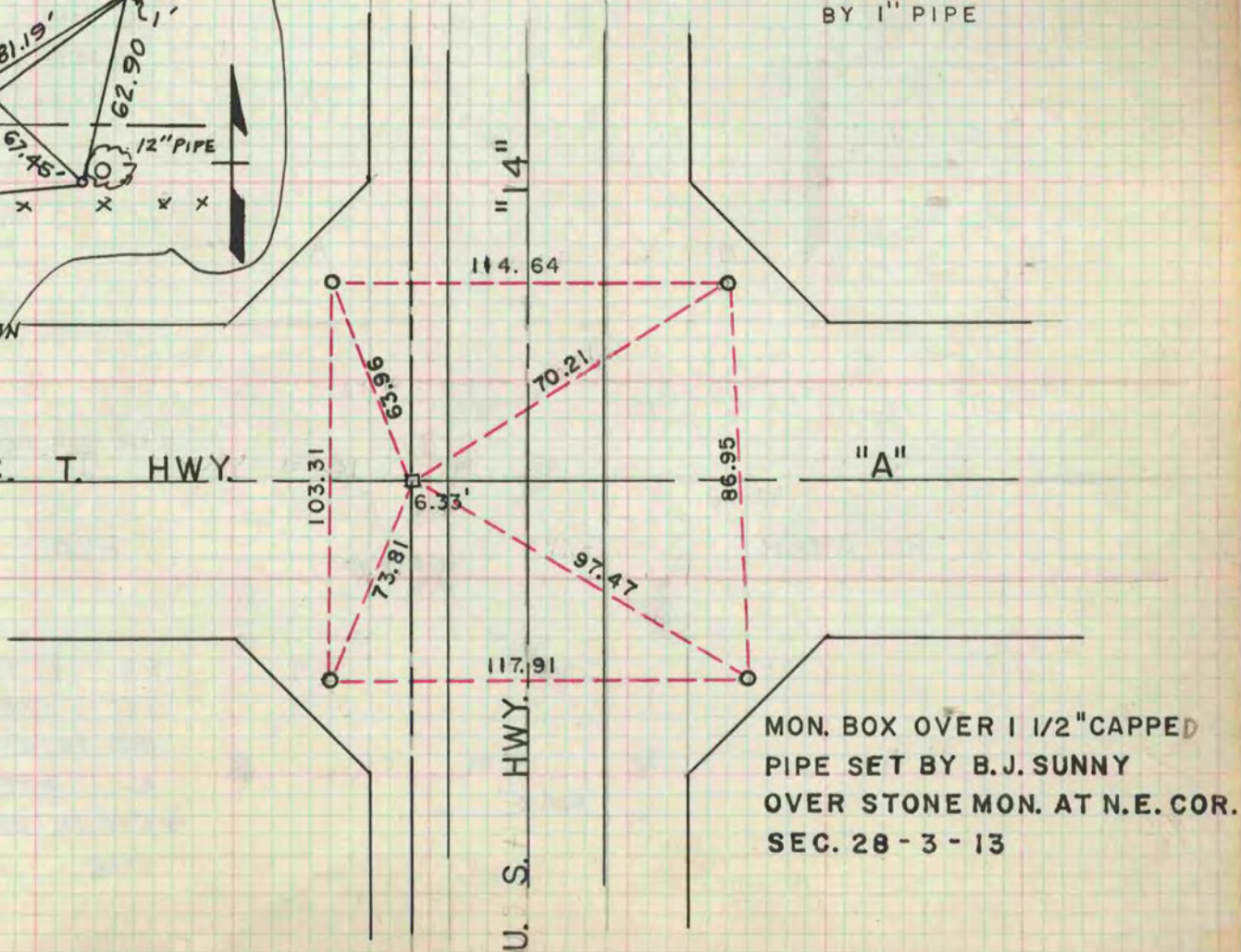
J. KANE  
M. HOFF  
T. GRISWOLD

COPIED FROM BELOIT REC  
12/9/75 DAB

ALL REF. PTS. MARKED  
BY 1" PIPE



C. T. HWY.



MON. BOX OVER 1 1/2" CAPPED  
PIPE SET BY B. J. SUNNY  
OVER STONE MON. AT N.E. COR.  
SEC. 28 - 3 - 13