

# PLAT AND RECORD

591  
V-4

COUNTY BUILDING  
CITY OF JANESVILLE

COUNTY BUILDING  
CITY OF JANESVILLE

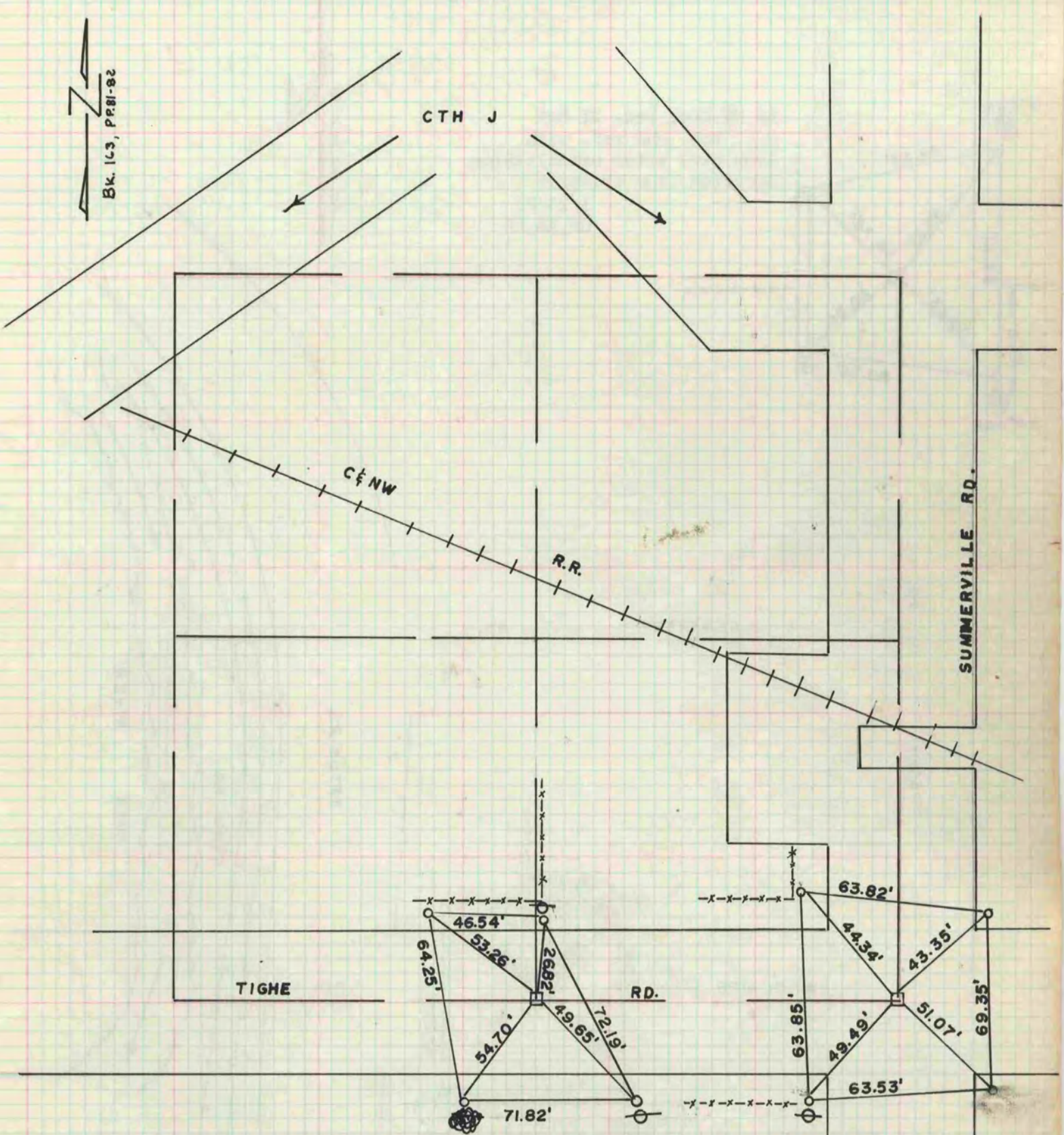
Of a Survey on Section 23 T 1 R 14 E. of the 4 P. M. in Clinton Township

Rock County, Wisconsin, made January the 23rd 1973

I hereby certify that the following is a correct record of said survey as made by me.

*Hugh J. De...*  
County Surveyor.

**MICROFILMED**



At S $\frac{1}{2}$  Cor. Set C.I. Mon.  
after locating by traversing  
section. Ref. with iron pins.  
This corner lies 3' South of  
North edge of pvt.

1/23/73  
TM  
GB

At S.E. Cor. Sec. 23  
Set C.I. Mon. after  
establishing location  
by traversing section  
Ref. with iron pins.  
This corner lies 3' N.  
& 3' E. of centerlines.

1/23/73  
TM  
GB