

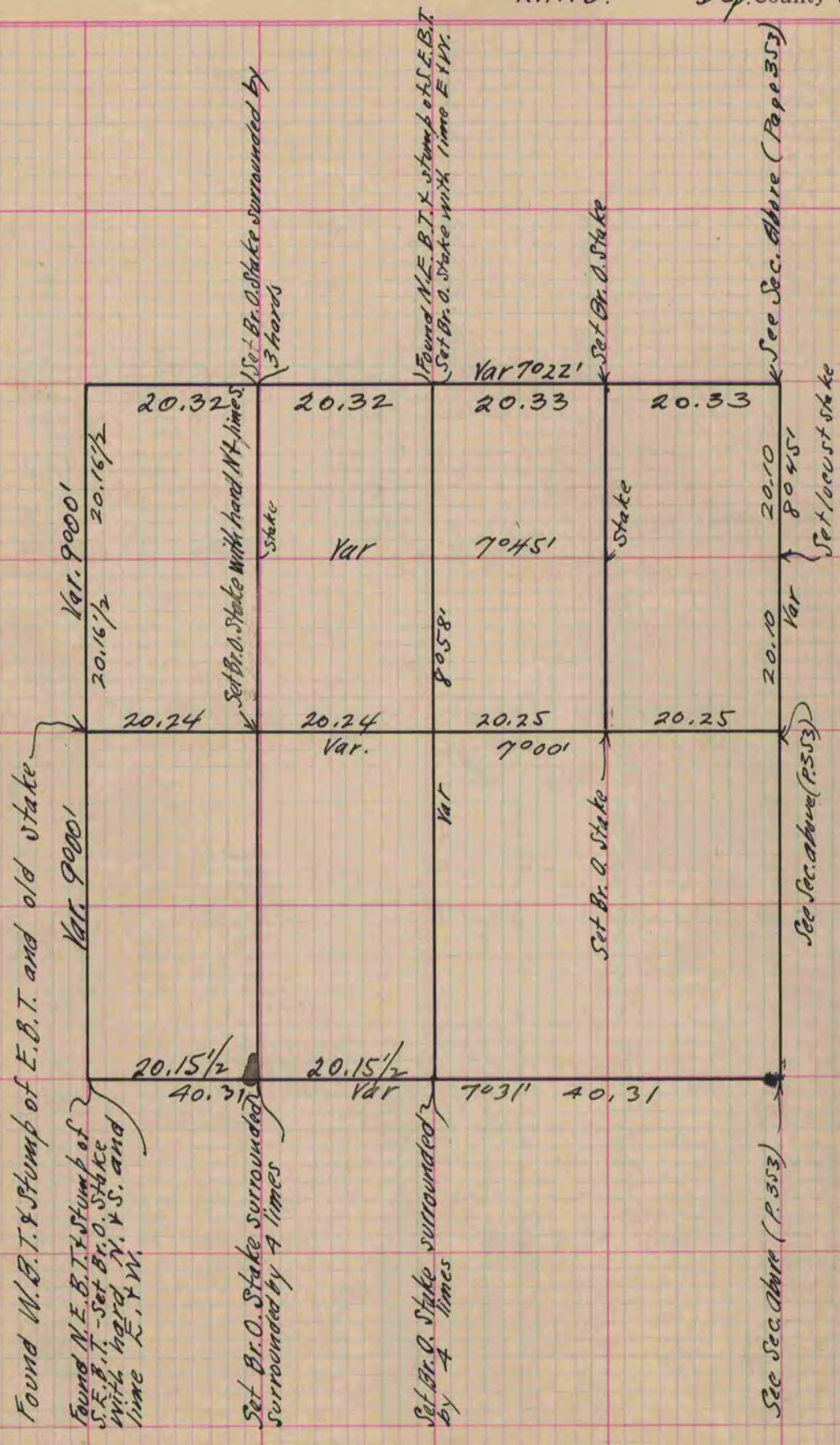
MICROFILMED PLAT AND RECORD

Of a Survey on Section 28 T 3 R 10 E. of the 4 P. M. in Magnolia Township
Rock County, Wisconsin, made July the 8th & 9th 1869

I hereby certify that the following is a correct record of said survey as made by me.

COUNTY BUILDING
CITY OF JANESVILLE

(Signed) R.K. Lee
R.H.B. Dep. County Surveyor.



Copied from Page 284 Vol. 1. Original County Surveyors Record