

PLAT AND RECORD

VOL. 5

Of a Survey on Section 35 T 4 R 12 E. of the 4 P. M. in FULTON Township
Rock County, Wisconsin, made NOV the WK of 14 1977

I hereby certify that the following is a correct record of said survey as made by me.

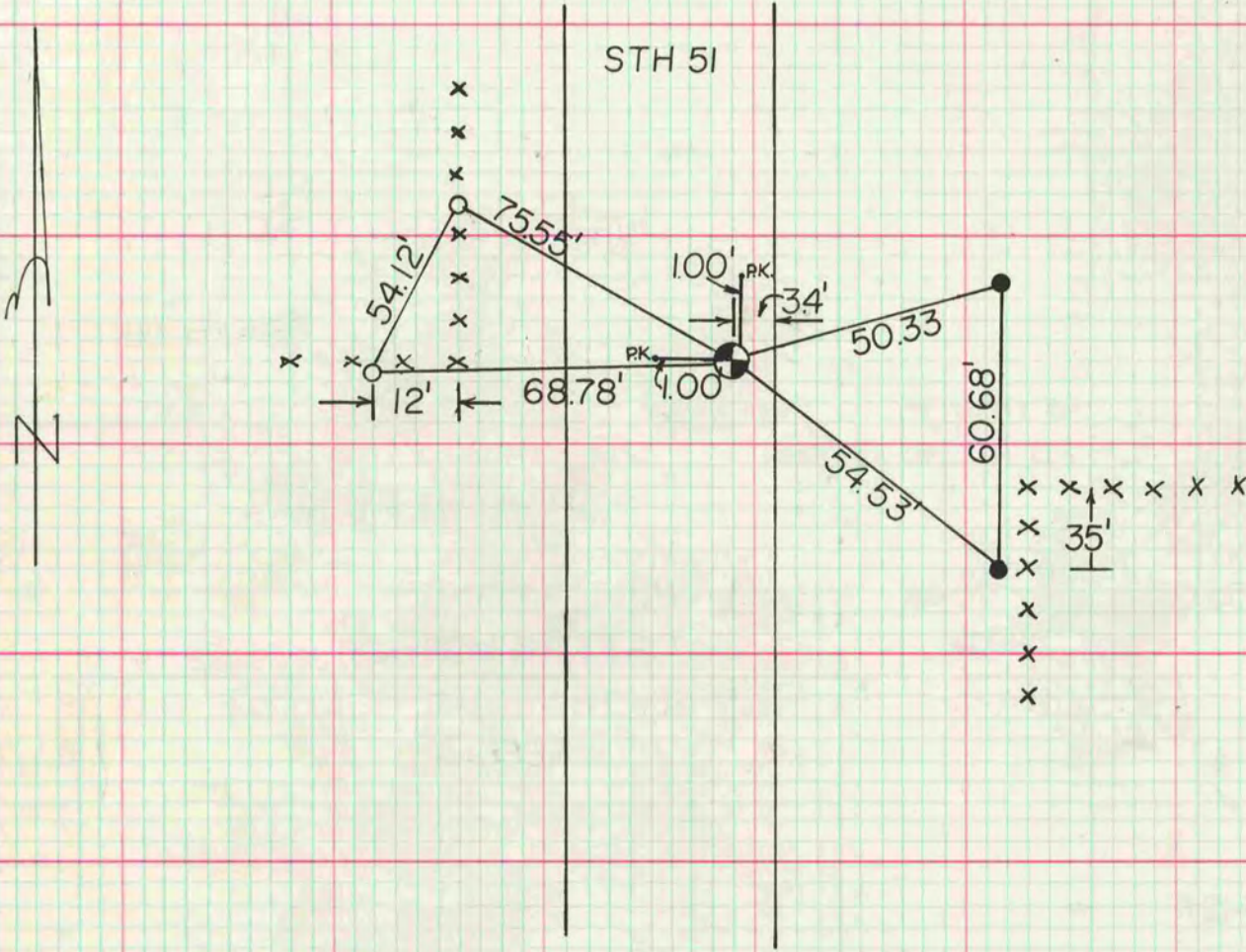
COUNTY BUILDING
CITY OF JANESVILLE

DONALD A. BARNES
S-2216
Donald Barnes
WI. County Surveyor.

E 1/4 COR. SEC. 35 T4 R12E.

FD ROUND C.I. MON.

- 1 1/4" X 24" IP
- G-1 MON WITH CAP



MICROFILMED