

PLAT AND RECORD

COUNTY BUILDING
CITY OF JANESVILLE

Of a Survey on Section **34** T **1** R **13** E. of the 4 P. M. in **TURTLE** Township

Rock County, Wisconsin, made **MAY** the **26** 19**78**

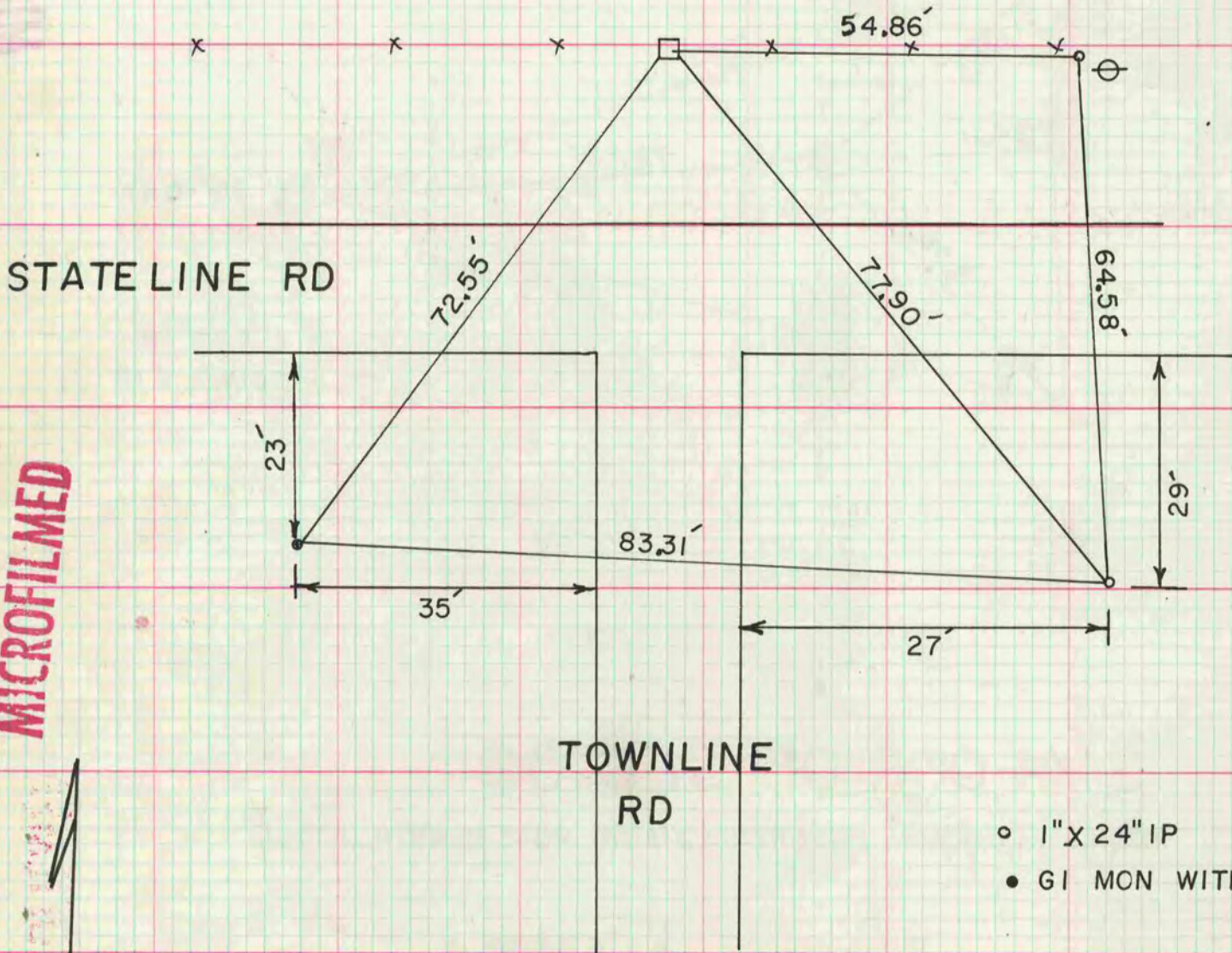
I hereby certify that the following is a correct record of said survey as made by me.



County Surveyor.

NE COR OF SEC 1 T46N R2E

FOUND CONCRETE MON WITH BRASS PLUG



MICROFILMED

- 1" X 24" IP
- GI MON WITH CAP

