

PLAT AND RECORD

Of a Survey on Section 10 T 4 N R 13 E of the 4 P. M. in AVON MILTON Township
 Rock County, Wisconsin, made JULY the 20 1976

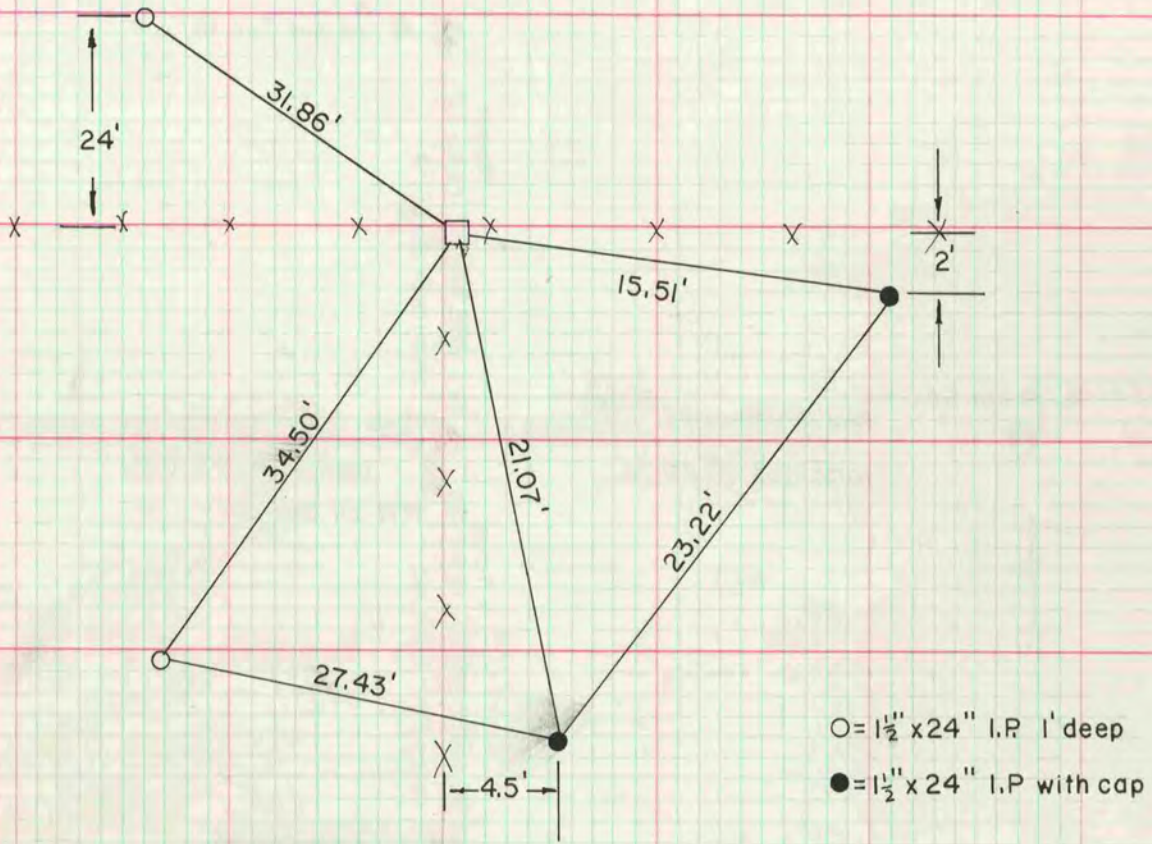
I hereby certify that the following is a correct record of said survey as made by me.

MICROFILMED
 COUNTY BUILDING
 CITY OF JANESVILLE



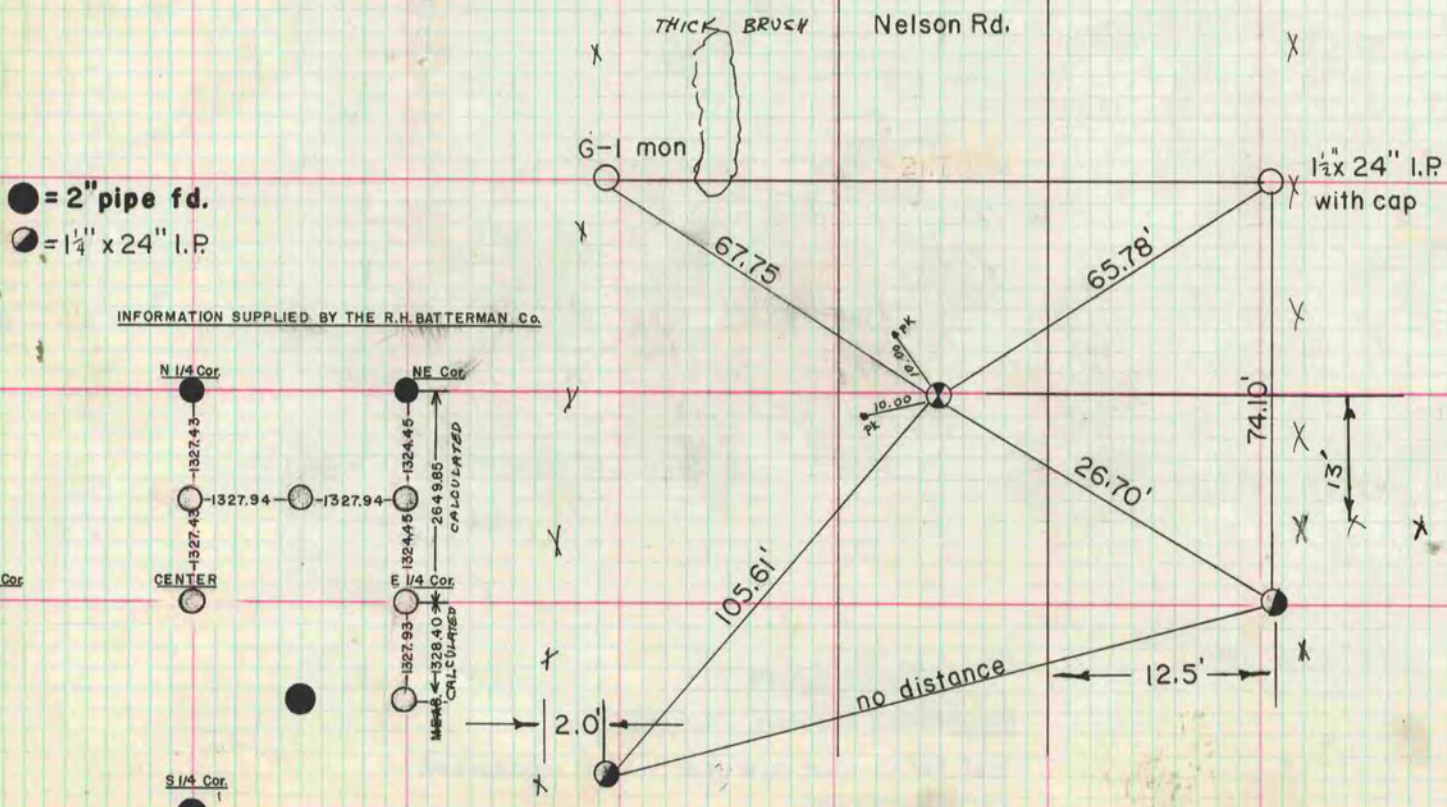
County Surveyor.

N 1/4 cor Sec 13 Milton Twp
 found cut stone stamped "S 1/4"
 0.4' above ground



○ = 1 1/2" x 24" I.P. 1' deep
 ● = 1 1/2" x 24" I.P. with cap

W 1/4 cor Sec 10 AVON TWP
 Dug and found nothing.
 1/4 Cor. set from information
 supplied by the R.H. Batterman Co.
 and from CSM Pg. 256 Vol. 4.



● = 2" pipe fd.
 ○ = 1 1/4" x 24" I.P.

INFORMATION SUPPLIED BY THE R.H. BATTERMAN Co.

