

# PLAT AND RECORD

95  
V-1

**MICROFILMED**

COUNTY BUILDING  
CITY OF JANESVILLE

Of a Survey on Section 20 T 1 R 12 E. of the 4 P. M. in Beloit Township

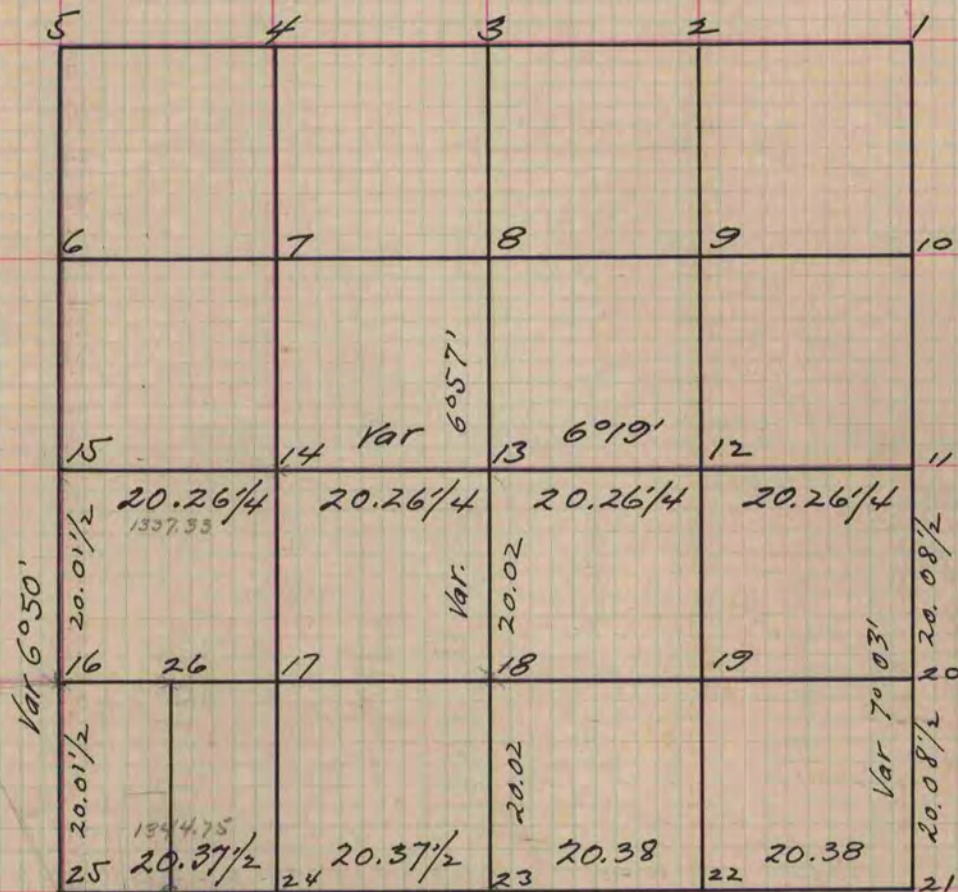
Rock County, Wisconsin, made March the 7<sup>th</sup> & 8<sup>th</sup> 1859

I hereby certify that the following is a correct record of said survey as made by me.

(Signed) Edward Ruger  
R.H.B. County Surveyor.

For Dexter, Farr & S. Chamberlain

Distances given in chains  
Variations marked on the lines



- 27 FD. by W.P. & Co. in 1967 Var. 6°03'
- At Fig. 3 Surrounded  $\frac{1}{4}$  post by 3 hard head Stones
  - " " 11 " " " 4 Lime stones
  - " " 13 " " " 3 hard heads & one lime stone.
  - " " 15 " " " 3 " "
  - " " " took New witness Trees
  - " " " Burr Oak 9 N 35° 26' E 170
  - " " " " " 6 N 60° 04' W. 174  $\frac{1}{4}$  Var 6°02'
  - " " " Black Oak 9 S 10° 57' W. 151
  - " " 18 Surrounded  $\frac{1}{8}$  post by 4 hard heads
  - " " " Burr Oak 6 N 6° 52' E 173  $\frac{1}{2}$
  - " " " " " S 28° 05' E. 154
  - " " " " " S 10° 37' E 173  $\frac{1}{2}$  Var 6°05'
  - " " 20 Surrounded post by 3 hard heads
  - " " " Burr Oak 2 S 7° 03' W 54  $\frac{1}{2}$
  - " " " " " 8 N 20° 18' W 144  $\frac{2}{3}$  Var 7°03'
  - " " 21 Fig 21 Surrounded post by 4 hard limestones
  - " " 26 Surrounded post by 3 hard head stones took W. Tree
  - Burr Oak 3 S 82° 27' E 18  $\frac{1}{3}$  - Wild cherry 6 N 57° 48' W 43  $\frac{1}{4}$  Var 6°09'
- At Fig 21 Burr Oak 10 S 35° 50' E 196 6°50'  
 " " " Black Oak 5 S 50° 43' W 155  $\frac{1}{2}$   
 " " " Hickory 2 N 64° 13' W 171 Var  
 At Fig 23 Surrounded post by 3 hard heads 6°55'  
 " " " Black Oak 6 S 49° 50' W 55  $\frac{1}{4}$   
 " " " " " 7 S 62° 05' W. 97  
 " " " " " 2 N 37° 55' W 62 Var  
 " " 25 Surrounded post by 4 hard heads  
 Black Oak 6 N 12° 58' W 114  $\frac{1}{2}$  Var  
 Burr Oak 1  $\frac{1}{2}$  N 76° 07' W 58  $\frac{1}{4}$   
 " " 5 N 89° 45' W 145  $\frac{2}{3}$  Var 6°05'  
 " Fig 27 Took witness trees & surrounded post by 4 hard heads  
 Aspen 4 N 13° 30' E 74  $\frac{1}{3}$   
 Black Oak 2 N 38° 32' E 71  $\frac{3}{4}$  Var 6°03'

Copied from Page 104 Vol. One Original County Surveyors Record