

PLAT AND RECORD

COUNTY BUILDING
CITY OF JANESVILLE

179
V-5

Of a Survey on Section 30 T 4 R 11 E. of the 4 P. M. in PORTER Township

Rock County, Wisconsin, made JULY the 2, 1976

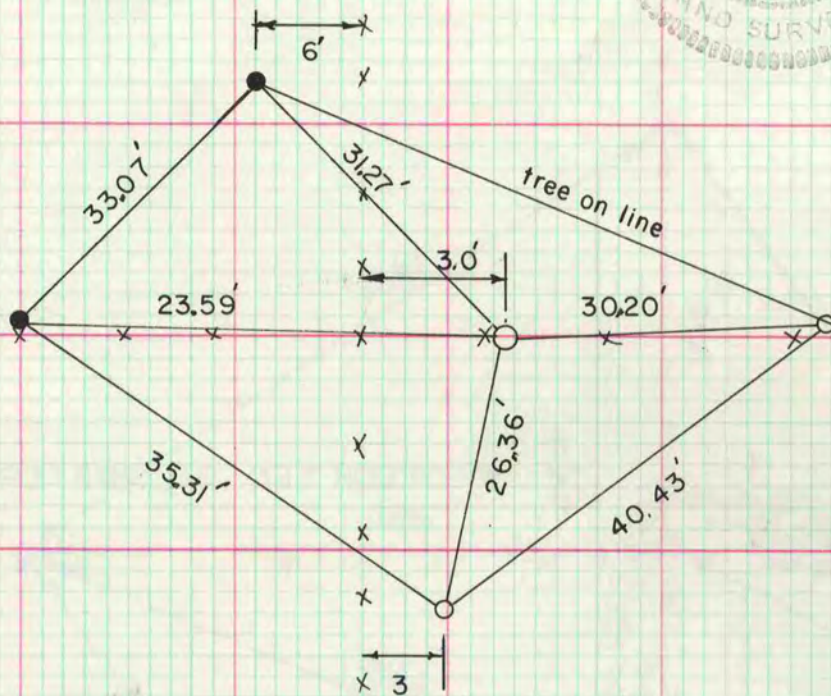
I hereby certify that the following is a correct record of said survey as made by me.



County Surveyor.

MICROFILMED

SE COR



FOUND 4 HH
SET BERTSEN-W-I-B
MON

S 1/4 COR

Dug large hole and found nothing. Set
S 1/4 cor on the N 1/4 cor and the center
line at the prorated distance from the
center,

- G I MON WITH CAP
- 1 1/4 X 25 IRON PIPE

