

PLAT AND RECORD

379

VOL. 5

Of a Survey on Section 23 T 2 R 14 E. of the 4 P. M. in BRADFORD Township
 Rock County, Wisconsin, made DEC the 5 1977

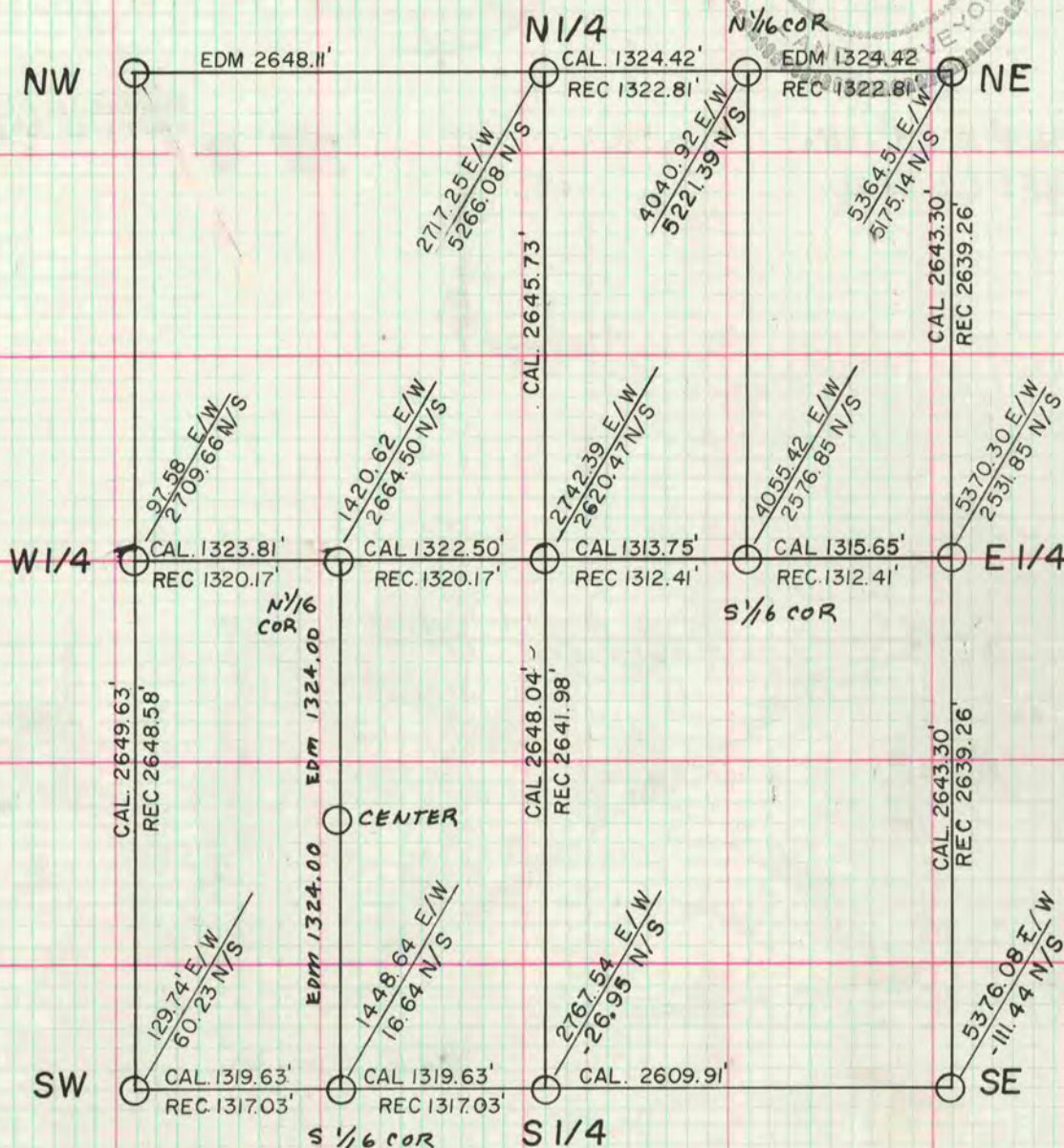
I hereby certify that the following is a correct record of said survey as made by me.

COUNTY BUILDING
 CITY OF JANESVILLE



County Surveyor.

SEC 23-2-14



NOTE:

CENTER: DUG & FD. NOTHING. CORNER ESTABLISHED BY INTERSECTION OF E/W & N/S 1/4 LINE. DID NOT MONUMENT CORNER

ALL REC. DISTANCES ARE FROM COUNTY SURVEY RECORDS VOL. 2 PG. 113 BY EDWARD RUGER 1873

CO-ORDINATES ARE BASED ON LOCAL CO-ORDINATES

SE COR SEC 23-2-14 SET C.I. MON. 2' DEEP IN PLOWED FIELD. SET ON LINE WITH NE & E 1/4 COR SEC 23. EDWARD RUGER SET E 1/4 COR SEC 23 ON LINE WITH NE & SE COR. AT MIDPOINT. COR. IS ON LINE WITH FENCE TO THE SOUTH

S 1/4 COR SEC 23-2-14 SET C.I. MON. 16" DEEP IN PLOWED FIELD. COR SET ON LINE WITH SW COR. SEC 23 & S 1/16 COR. OF THE SW 1/4 SEC 23

MICROFILMED