

PLAT AND RECORD

173
V-5

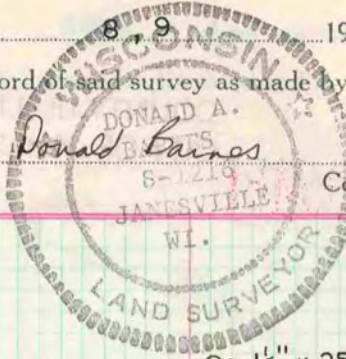
Of a Survey on Section $\begin{matrix} 5 \\ 13 \end{matrix}$ T $\begin{matrix} 4 N \\ 4 N \end{matrix}$ R $\begin{matrix} 10 \\ 13 \end{matrix}$ E. of the 4 P. M. in Union Milton Township

Rock County, Wisconsin, made JUNE the 9 1976

I hereby certify that the following is a correct record of said survey as made by me.

COUNTY BUILDING
CITY OF JANESVILLE

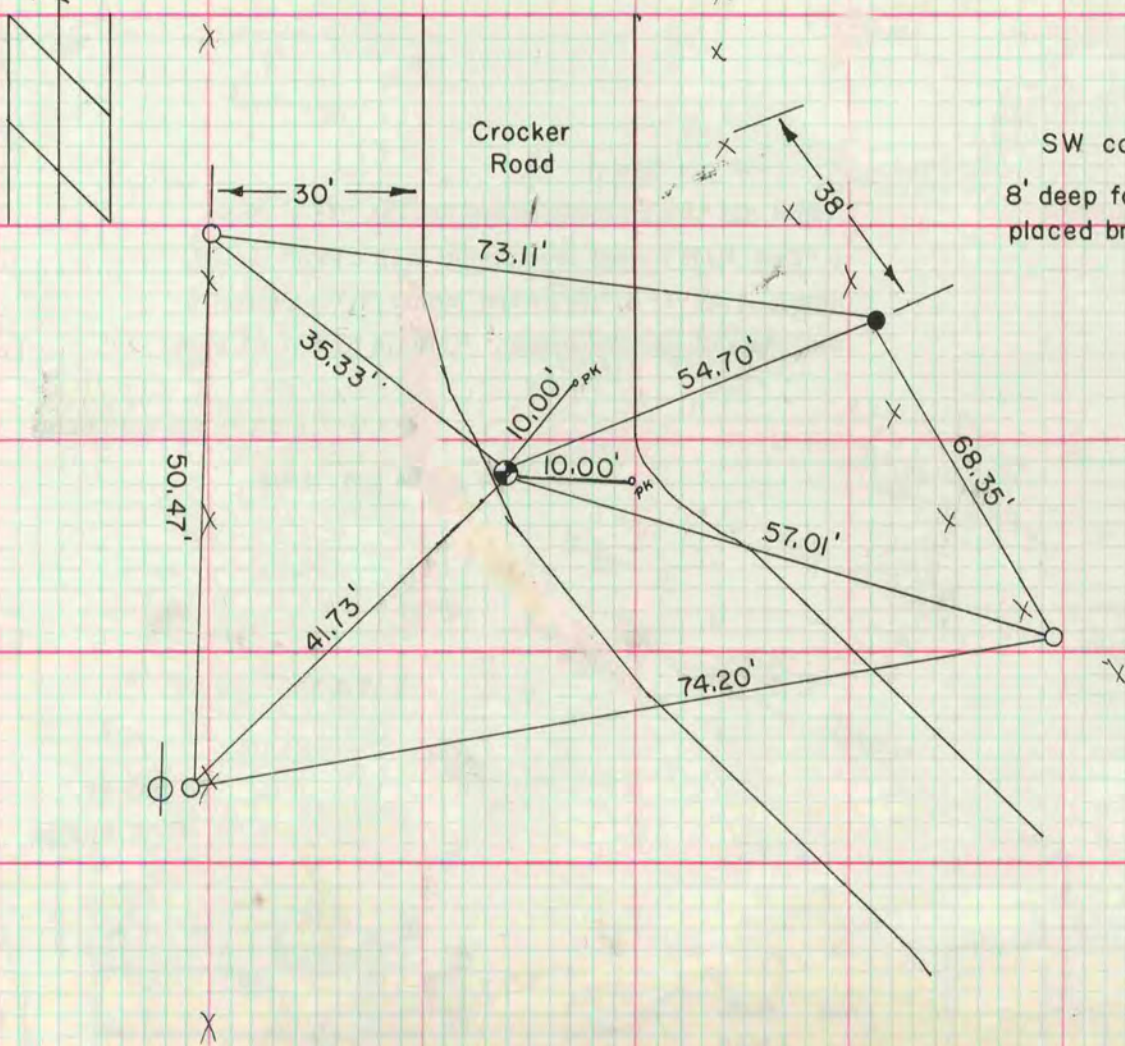
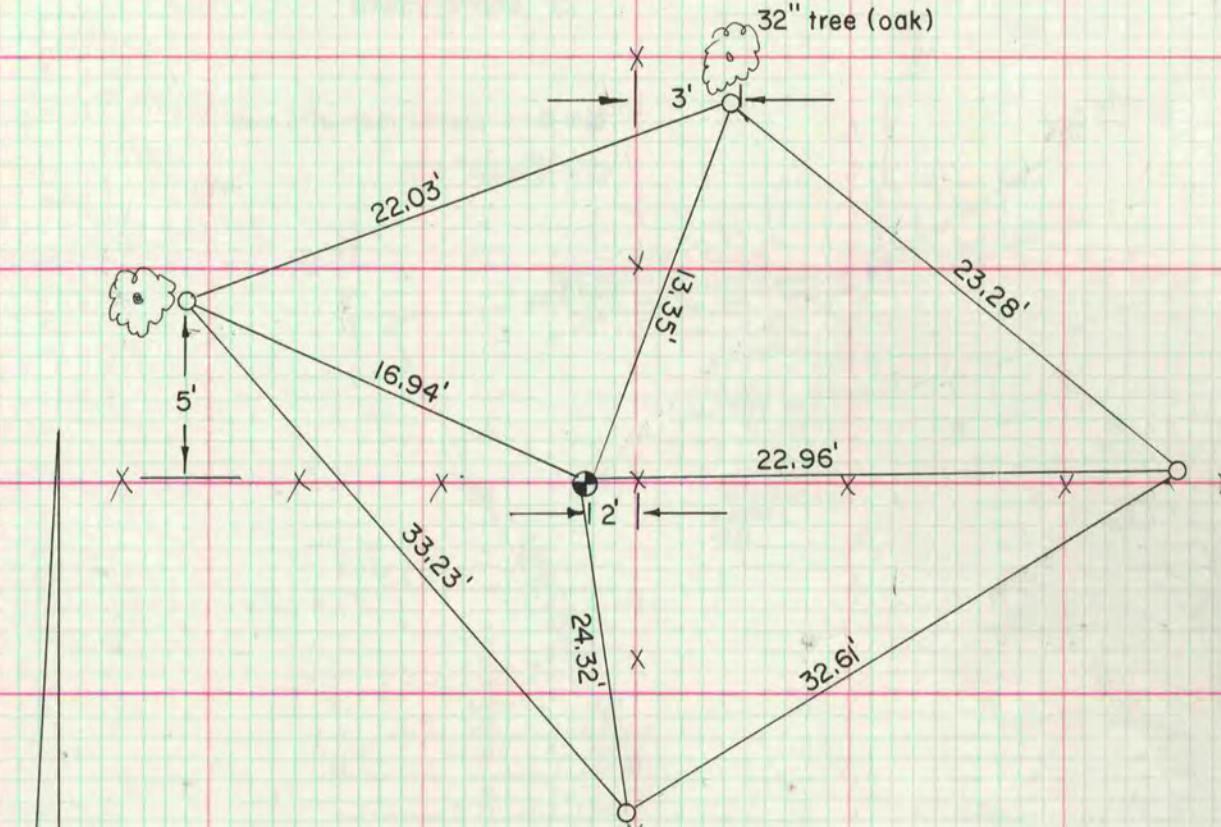
MICROFILMED



County Surveyor.

W 1/4 cor Sec 13 Milton Twp
found cut limestone .3' above ground

O = 1 1/4" x 25" I.P.



SW cor Sec 5 Union Twp
8' deep found cut limestone mon
placed broken shovel by mon

● = G-I mon with capp
O = 1 1/4" x 25" I.P.