

PLAT AND RECORD

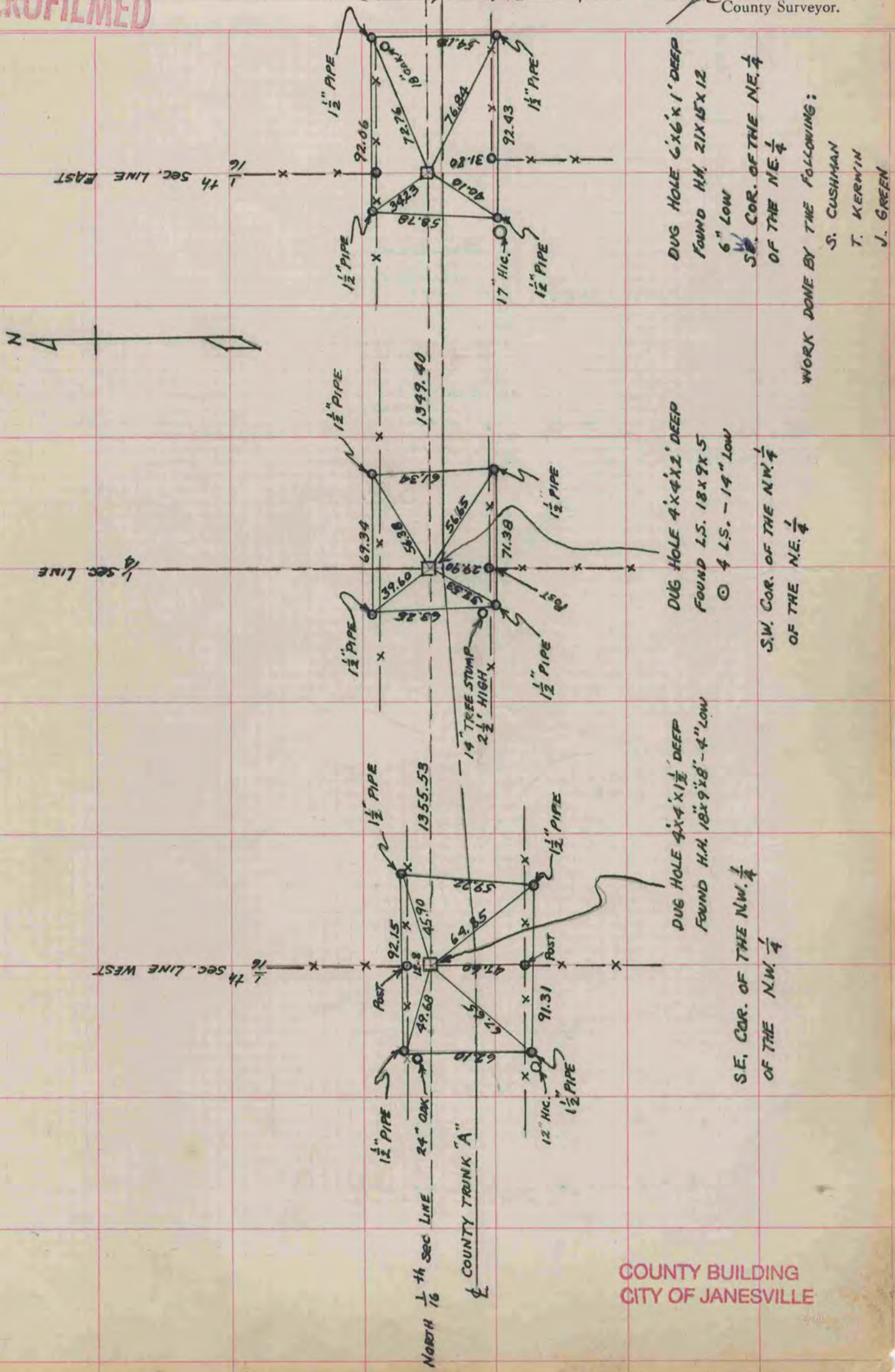
517
V-3

CO. BUILDING CITY OF JANESVILLE
Of a Survey on Section 20 T 3N R 10 E. of the 4 P. M. in MAGNOLIA Township
Rock County, Wisconsin, made AUGUST 19th 1910 the 21st 1917

I hereby certify that the following is a correct record of said survey as made by me.

R. B. Bosterman
County Surveyor.

MICROFILMED



DUG HOLE 6'x6'x1' DEEP
FOUND H.H. 21x15x12
6" LOW
S.W. COR. OF THE NE. 1/4
OF THE NE. 1/4

WORK DONE BY THE FOLLOWING:
S. CUSHMAN
T. KERWIN
J. GREEN

DUG HOLE 4'x4'x2' DEEP
FOUND L.S. 18x9x5
© 4 L.S. - 14" LOW
S.W. COR. OF THE NW. 1/4
OF THE NE. 1/4

DUG HOLE 4'x4'x1 1/2' DEEP
FOUND H.H. 18x9'x8"-4" LOW
S.E. COR. OF THE NW. 1/4
OF THE NW. 1/4

COUNTY BUILDING
CITY OF JANESVILLE