

# PLAT AND RECORD

43  
V-4

ROCK COUNTY BUILDING  
CITY OF JANESVILLE

Of a Survey on Section 28 T 4 R 10 E. of the 4 P. M. in UNION Township

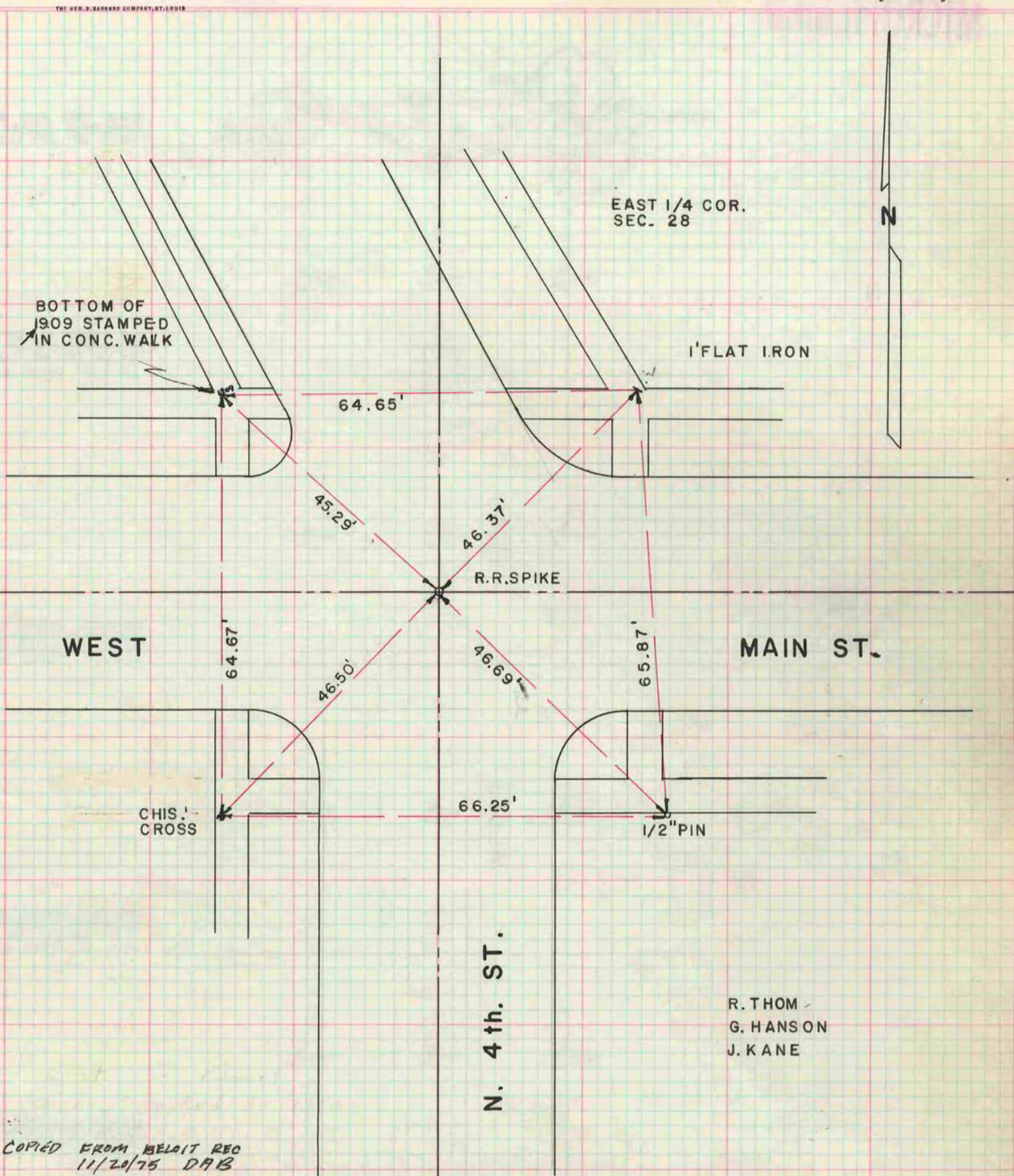
Rock County, Wisconsin, made JULY the 13 1960

I hereby certify that the following is a correct record of said survey as made by me.

**MICROFILMED**

*R. H. Bettendorf*

County Surveyor.



COPIED FROM BELoit REC  
11/20/75 DAB

5/29/74 by KEN HENNING CREW CHIEF  
FROM JENSEN & JOHNSON FOUND OUT  
STONE TIPPED OVER & STRAIGHTENED SAME  
STONE FELL 0.43 SW OF ABOVE REFERENCES  
HIGHWAY DEPT TO FURNISH NEW REFERENCES  
STONE TO BE SET ACCORDING TO ABOVE REFERENCES