

PLAT AND RECORD

COUNTY BUILDING
CITY OF JANESVILLE

CITY OF JANESVILLE
COUNTY BUILDING

Of a Survey on Section 18 T 2 R 13 E. of the 4 P. M. in LA PRAIRIE Township

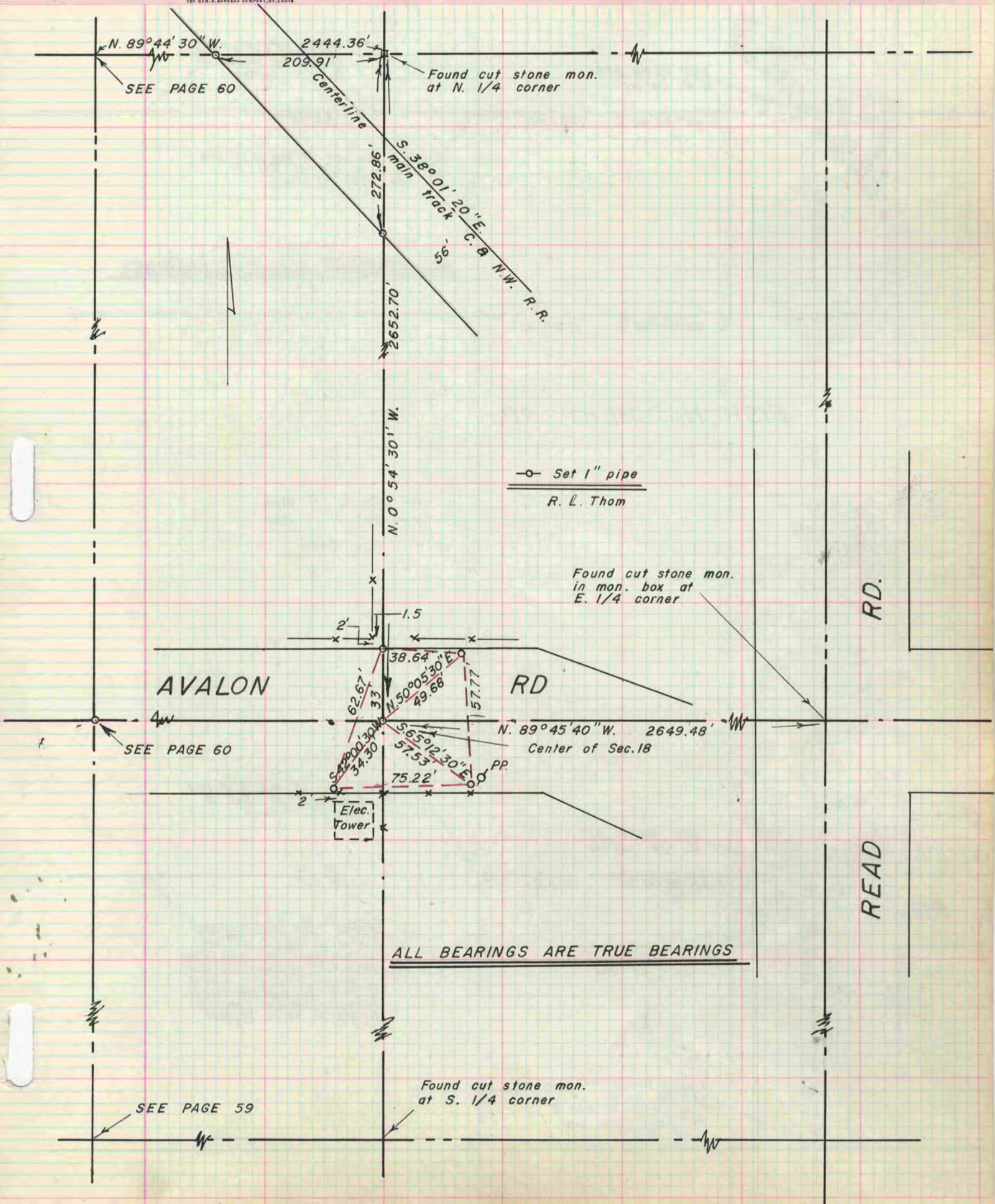
Rock County, Wisconsin, made October the 8 1968

I hereby certify that the following is a correct record of said survey as made by me.

MICROFILMED

R. L. Thom

County Surveyor.



N. 89° 44' 30" W.
SEE PAGE 60

2444.36'
209.91'
Centerline
Found cut stone mon. at N. 1/4 corner

S. 38° 01' 20" E.
main track C. & N.W. R.R.

Set 1" pipe
R. L. Thom

Found cut stone mon. in mon. box at E. 1/4 corner

AVALON

RD

RD.

READ

SEE PAGE 60

38.64'
N. 50° 05' 30" E.
49.68'
57.77'
N. 89° 45' 40" W. 2649.48'
Center of Sec. 18
S. 65° 12' 30" E.
57.53'
75.22'
Elec. Tower

ALL BEARINGS ARE TRUE BEARINGS

SEE PAGE 59

Found cut stone mon. at S. 1/4 corner