

PLAT AND RECORD

COUNTY BUILDING CITY OF JANESVILLE

12/8/75 DAB

Of a Survey on Section 28 T 3 R 13 E. of the 4 P. M. in HARMONY Township

Rock County, Wisconsin, made MAY the 7 1962

I hereby certify that the following is a correct record of said survey as made by me.

MICROFILMED

RWB

County Surveyor.

See Page 153 Beloit



R. Thom
G. Hanson
J. Kane

Nail in South face of T.P. set by B.J.S. checked ok.

Set 1" pipe on top of cut stone mon.

1" pipe 1' from T.P.

MON BOX 4-6-70*

C.T.H.

7.7' N. of C

"A"

1" pipe 1' from P.P.

Lane
Farm

1" pipe between fence & 12" pine

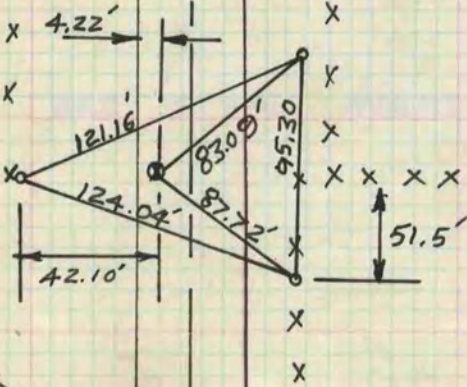
1 story frame house

Dug and found cut stone mon. at the N. 1/4 cor. sec. 28-3-13.

COPIED FROM BELOIT REC 12/8/75 DAB

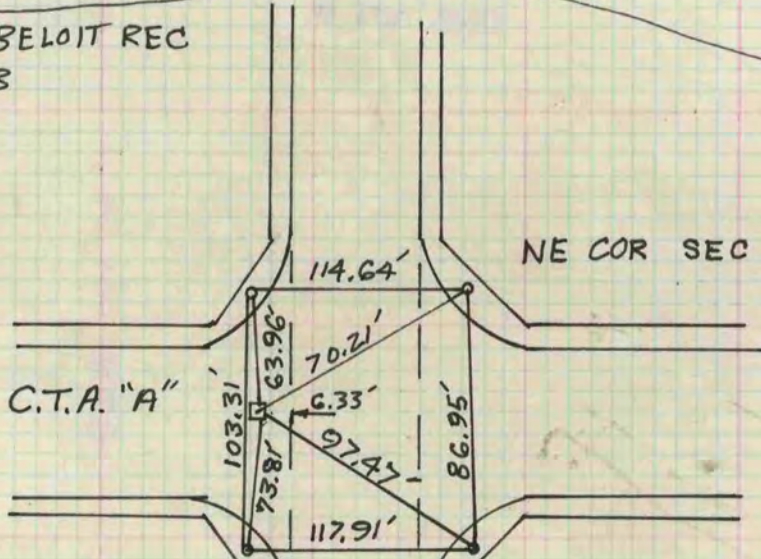
E 1/4 COR SEC 28

US. 14



NE COR SEC 28

C.T.A. "A"



REF & SET A MON. BOX OVER A 1 1/2" CAPPED PIPE FOUND BY R.L. THOM. (PIPE WAS SET OVER STONE BY SUNNY)