

PLAT AND RECORD

V-3 417

PG 407 BELOIT
REC 12/16/75 DAB

O.L. #46, Sheet #3, City of Evansville,

Of a Survey on Section 27 (S.W. 1/4) T 4 N., R 10 E. of the 4 P. M. in Union Township

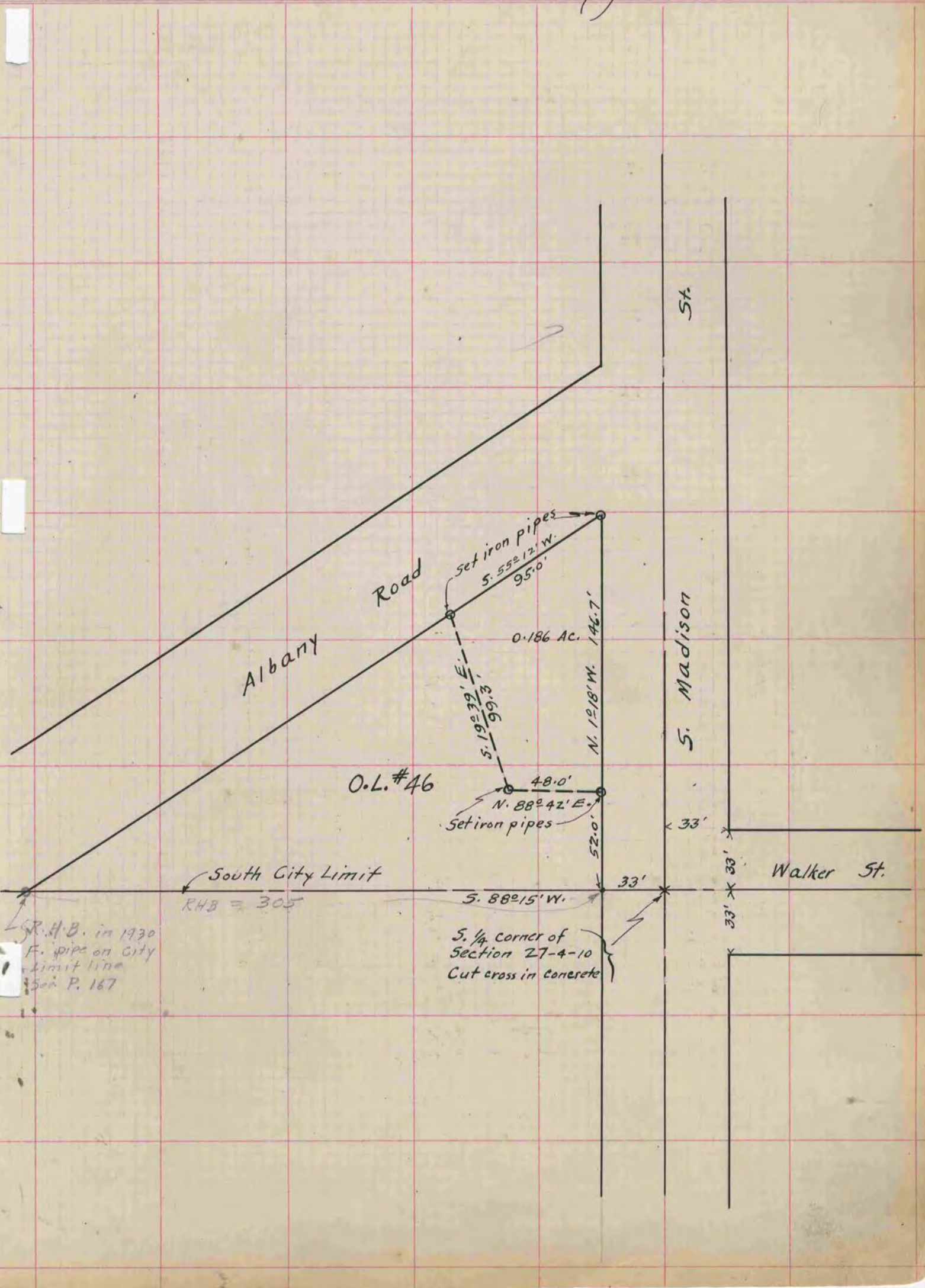
Rock County, Wisconsin, made May the 2 1939

I hereby certify that the following is a correct record of said survey as made by me.

MICROFILMED

COUNTY BUILDING
CITY OF JANESVILLE

B. Sunny
County Surveyor.



R.A.B. in 1930
F. pipe on City
limit line
See P. 167