

MICROFILMED

PLAT AND RECORD

307  
V-1

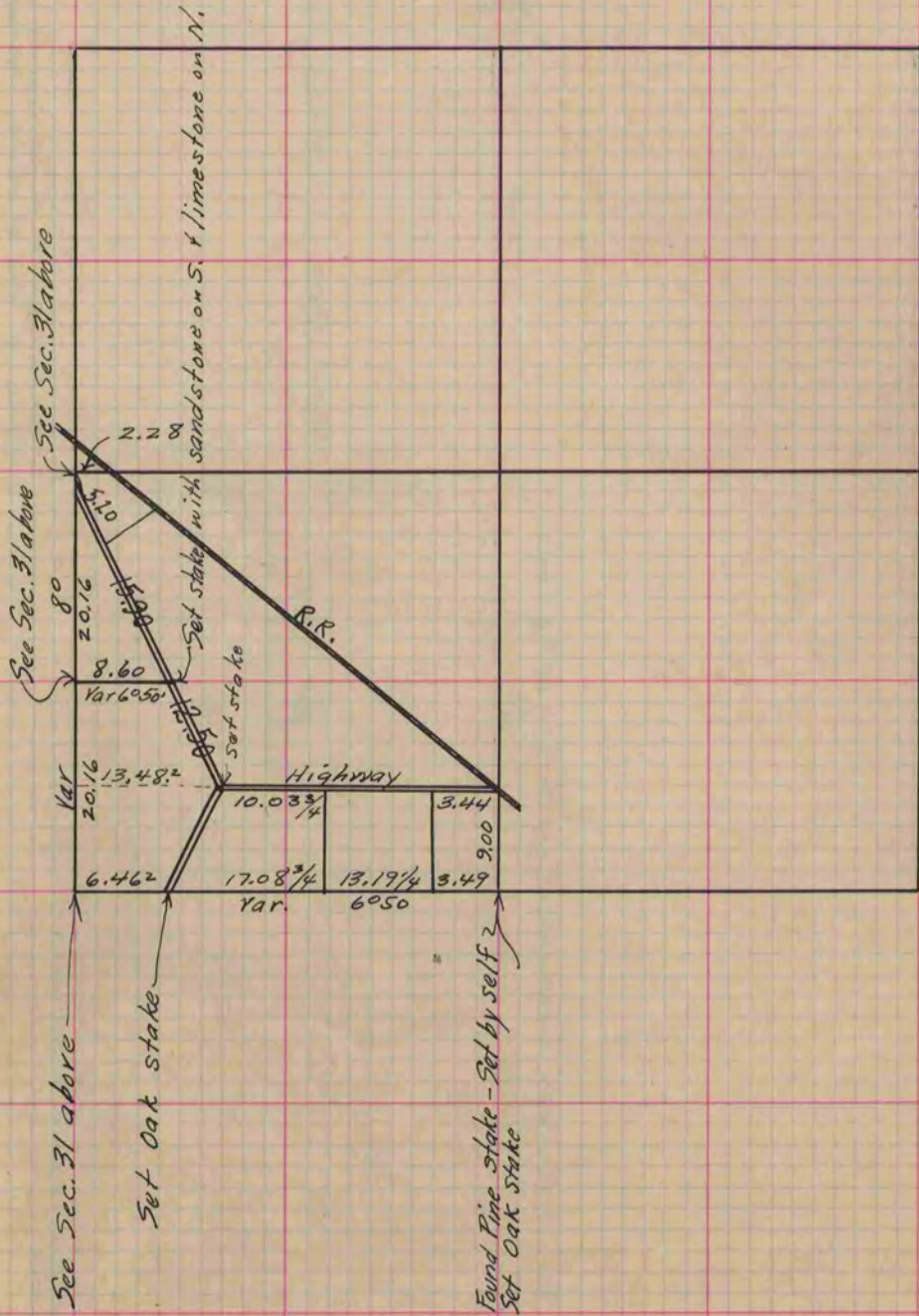
COUNTY BUILDING  
CITY OF JANESVILLE

Of a Survey on Section 32 T 3 R 11 E. of the 4 P. M. in Centre Township

Rock County, Wisconsin, made December the 30 + 31 1867

I hereby certify that the following is a correct record of said survey as made by me.

(Signed) S. D. Locke  
R.H.B. County Surveyor.



Copied from Page 259 Vol. 1. Original County Surveyors Record