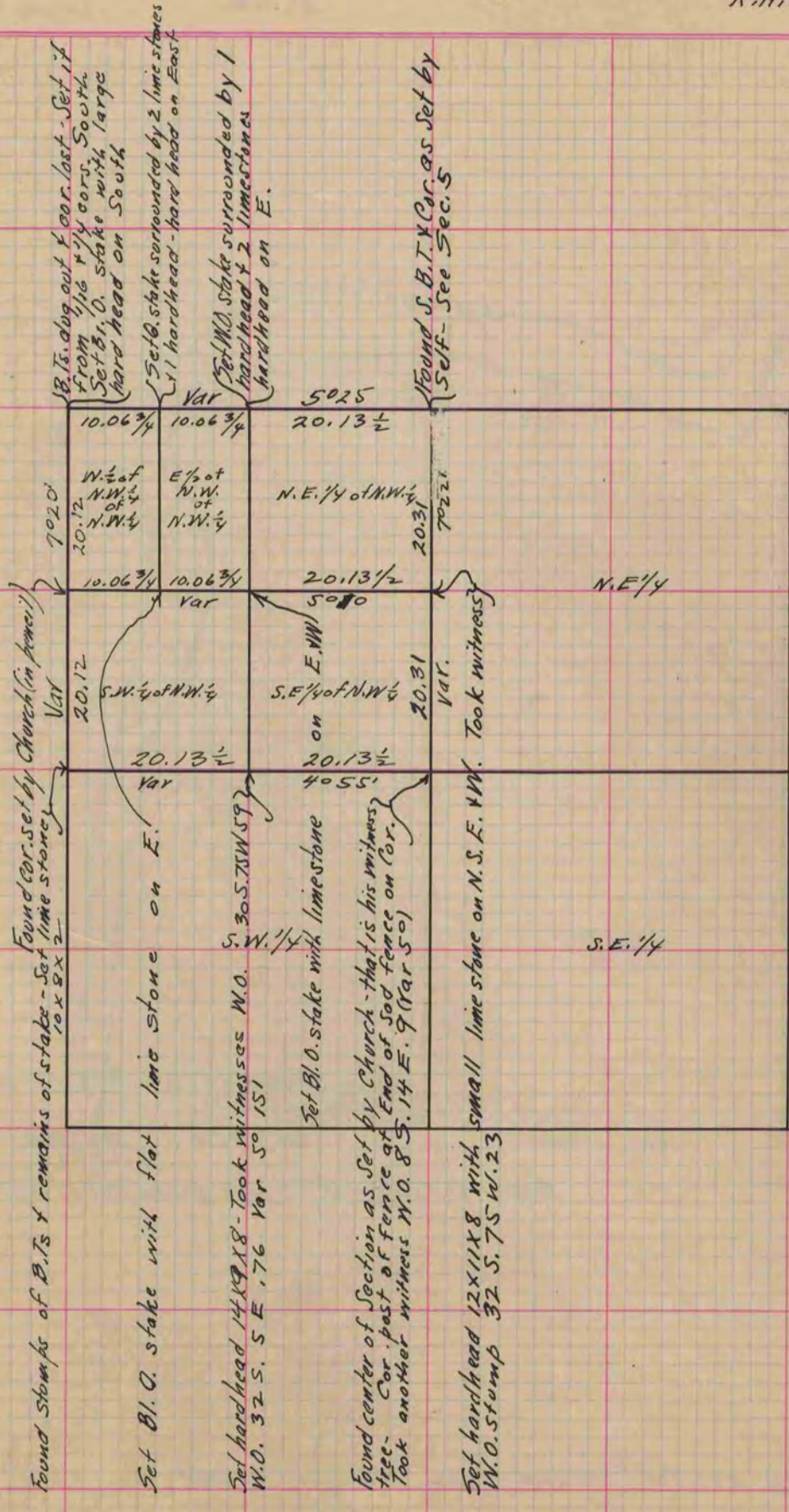


Of a Survey on Section 8 T 2 R 11 E. of the 4 P. M. in Plymouth Township

Rock County, Wisconsin, made February the 25 1868

I hereby certify that the following is a correct record of said survey as made by me.

(Signed) S. D. Locke
R.H.B. County Surveyor.



Copied from Page 260 Vol. 1. Original County Surveyors Record