

MICROFILMED

# PLAT AND RECORD

89  
V-3

Of a Survey on Section 26 T 1 R 12 E. of the 4 P. M. in Beloit Township

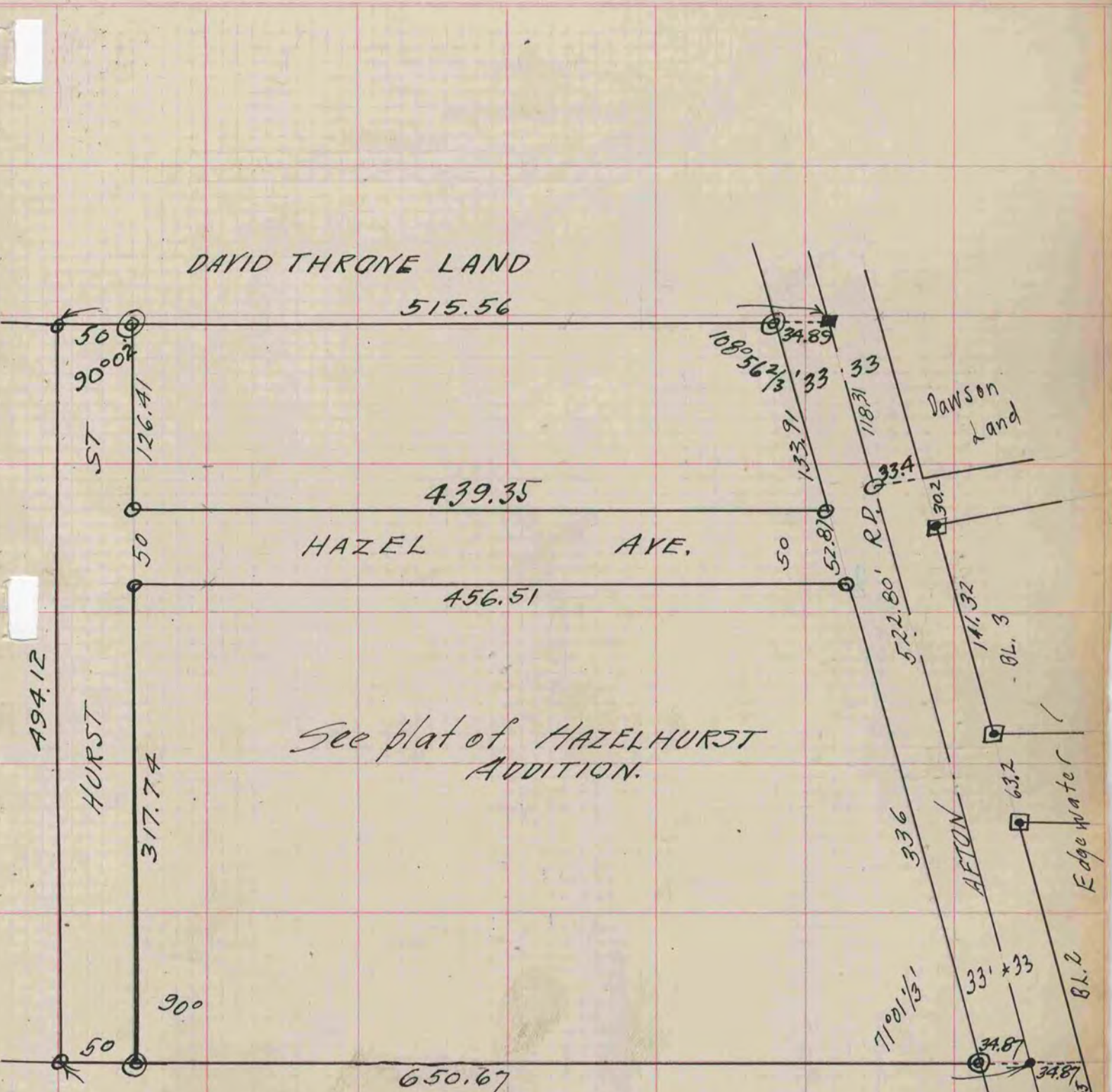
Rock County, Wisconsin, made September the 24 1919

I hereby certify that the following is a correct record of said survey as made by me.

COUNTY BUILDING  
CITY OF JANESVILLE

*W.A. Battersman*

County Surveyor.



See plat of HAZELHURST ADDITION.

- F.E. PECK LAND.
- o = Gas pipe, ⊙ = Gas pipe Cross Cap on top.
  - = iron rod, ■ = iron rod square head.
  - ◻ = iron rod set in concrete

#265  
For. John Hunt.