

MICROFILMED

PLAT AND RECORD

Of a Survey on Section 17 T 3 R 12 E. of the 4 P. M. in Janesville Township

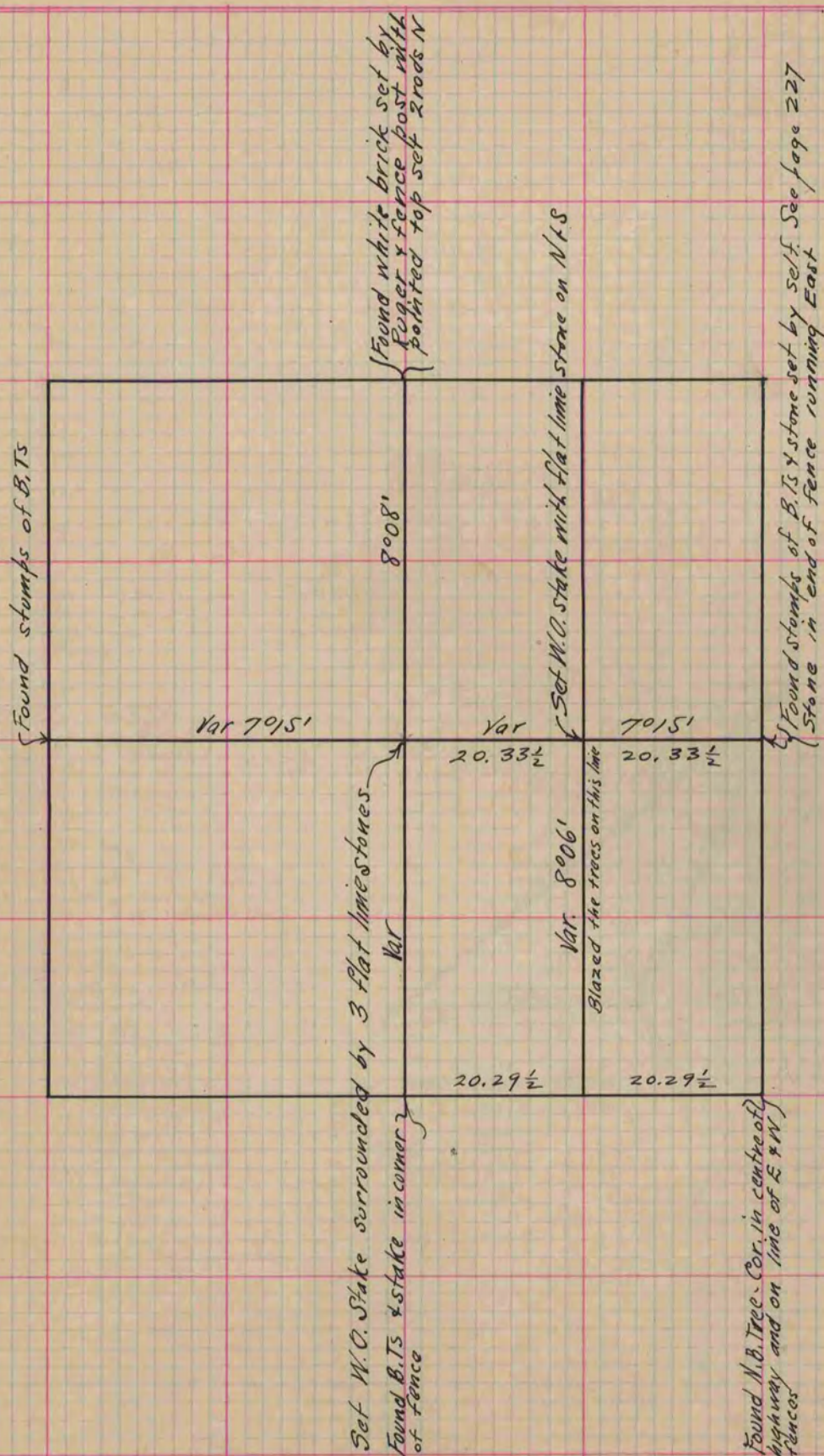
Rock County, Wisconsin, made January the 21 1868

I hereby certify that the following is a correct record of said survey as made by me.

COUNTY BUILDING
CITY OF JANESVILLE

(Signed) S. D. Locke
R.H.B.

County Surveyor.



Copied from Page 260, Vol. 1, Original County Surveyors Record