

# PLAT AND RECORD

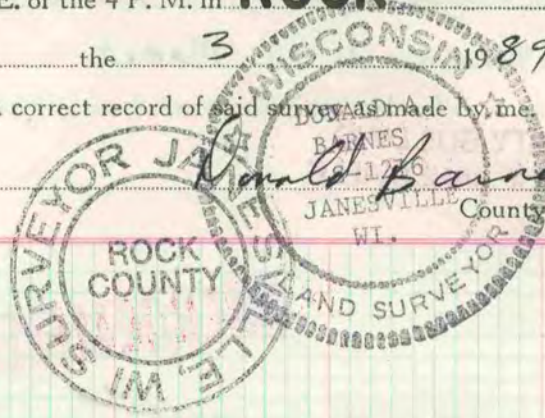
395  
VOL. 6

Of a Survey on Section **13** T **32** R **10**<sup>12</sup> E. of the 4 P. M. in **ROCK** Township

Rock County, Wisconsin, made *March* the *3* 19*89*

I hereby certify that the following is a correct record of said survey as made by me.

COUNTY BUILDING  
CITY OF JANESVILLE

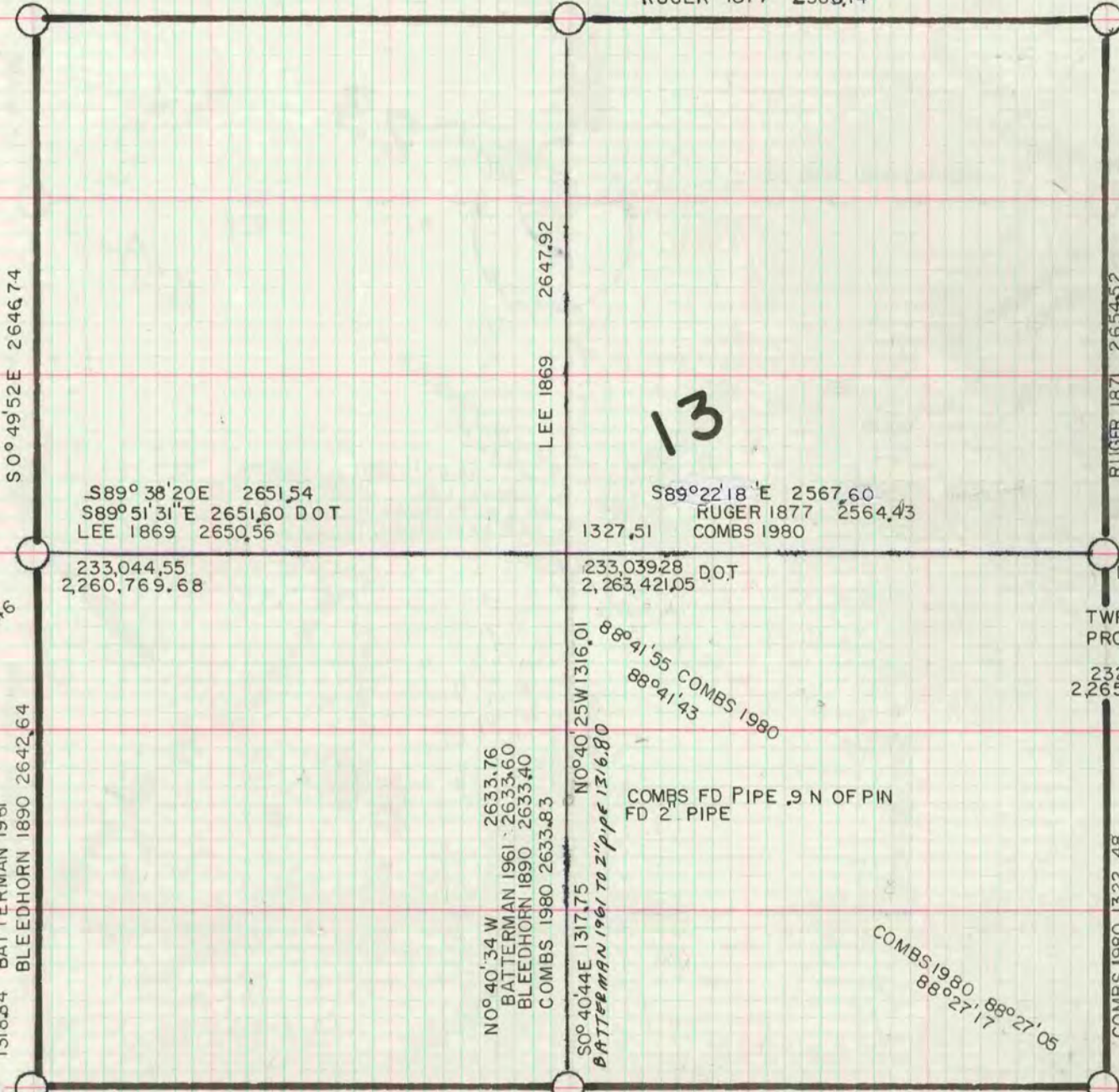


MICROFILMED

235,652.85  
2,265,952.87  
TWP 235,653.62  
PROJ 2,265,952.65  
D.O.T 235,653.20  
2,265,952.30

NW  
COR

NE  
COR



W 1/4

E 1/4

SW  
COR

SE  
COR

FD BRASS PLUG  
DOT 233,045.82  
2,260,769.46

HURD 230,406.64  
2,260,806.45  
230,405.22  
2,260,806.44

DOT 233,000.00  
2,265,988.48  
TWP 233,000.50  
PROJ 2,265,988.52  
232,999.61  
2,265,988.72

BATTERMAN 1961 2647.12  
S89°45'41"E 2645.81  
COMBS 1980 2567.92  
S89°07'32"E 2567.62  
230,394.17  
2,263,452.28

230,355.91 TWP  
2,266,019.48 PROJ  
230,356.52 HURD  
2,266,019.56  
230,354.95  
2,266,019.67