

580
34

VOL. 6 PLAT AND RECORD

Of a Survey on Section 36 T 4 R 10 E. of the 4 P. M. UNION Township

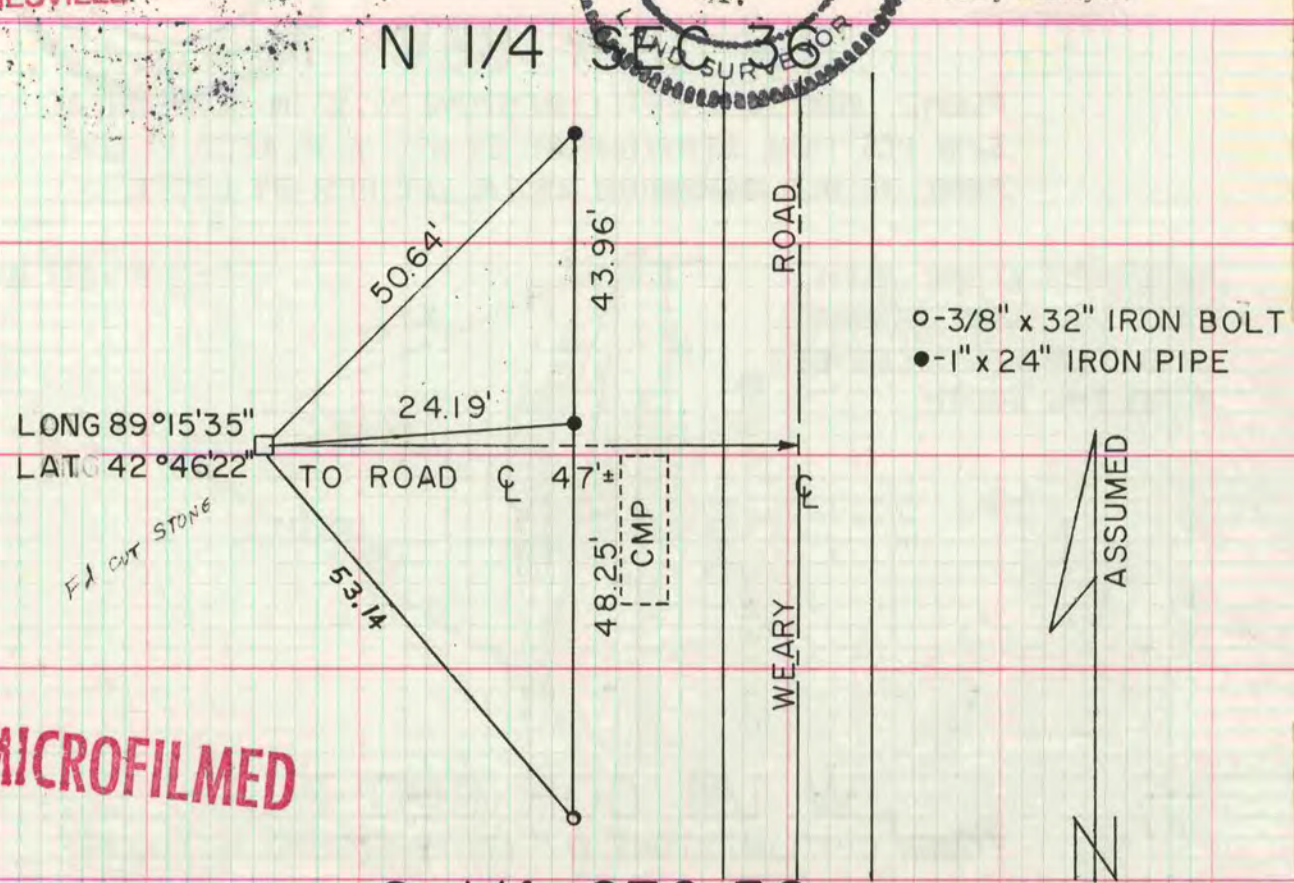
Rock County, Wisconsin made APRIL 29 1980

I hereby certify that the following is a correct record of said survey as made by me.



COUNTY BUILDING
CITY OF JANESVILLE

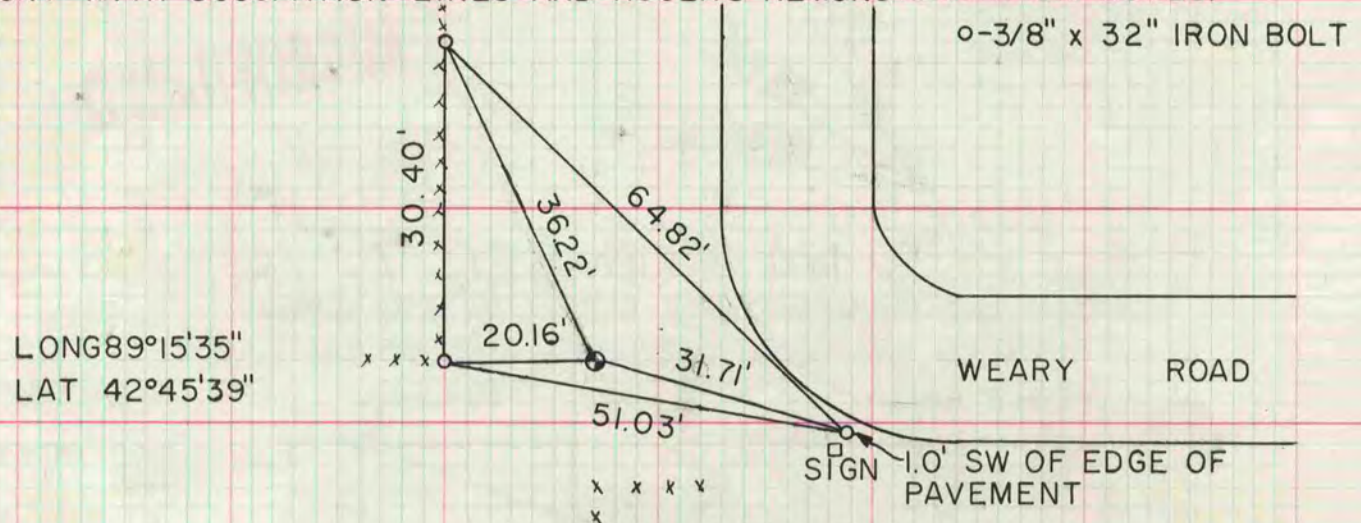
County Surveyor.



MICROFILMED

S 1/4 SEC 36

DUG 3' DEEP FOUND AREA DISTURBED BY DITCHING. FOUND 2 LARGE PIECES OF LIMESTONE LAYING HORIZONTALLY, COULD BE PART OF CUT LIMESTONE. ALSO FOUND OLD FENCE INTERSECTION 2' DEEP SET ALUM. MON. THERE. THIS IS IN HARMONY WITH OCCUPATION LINES AND RUGER'S REMONUMENTATION NOTES.



CORNER DESTROYED BY LARGE IRRIGATION DITCH
COMPUTED CORNER POSITION IS IN THE CENTER OF THE DITCH

