

PLAT AND RECORD

COUNTY BUILDING
CITY OF JANESVILLE

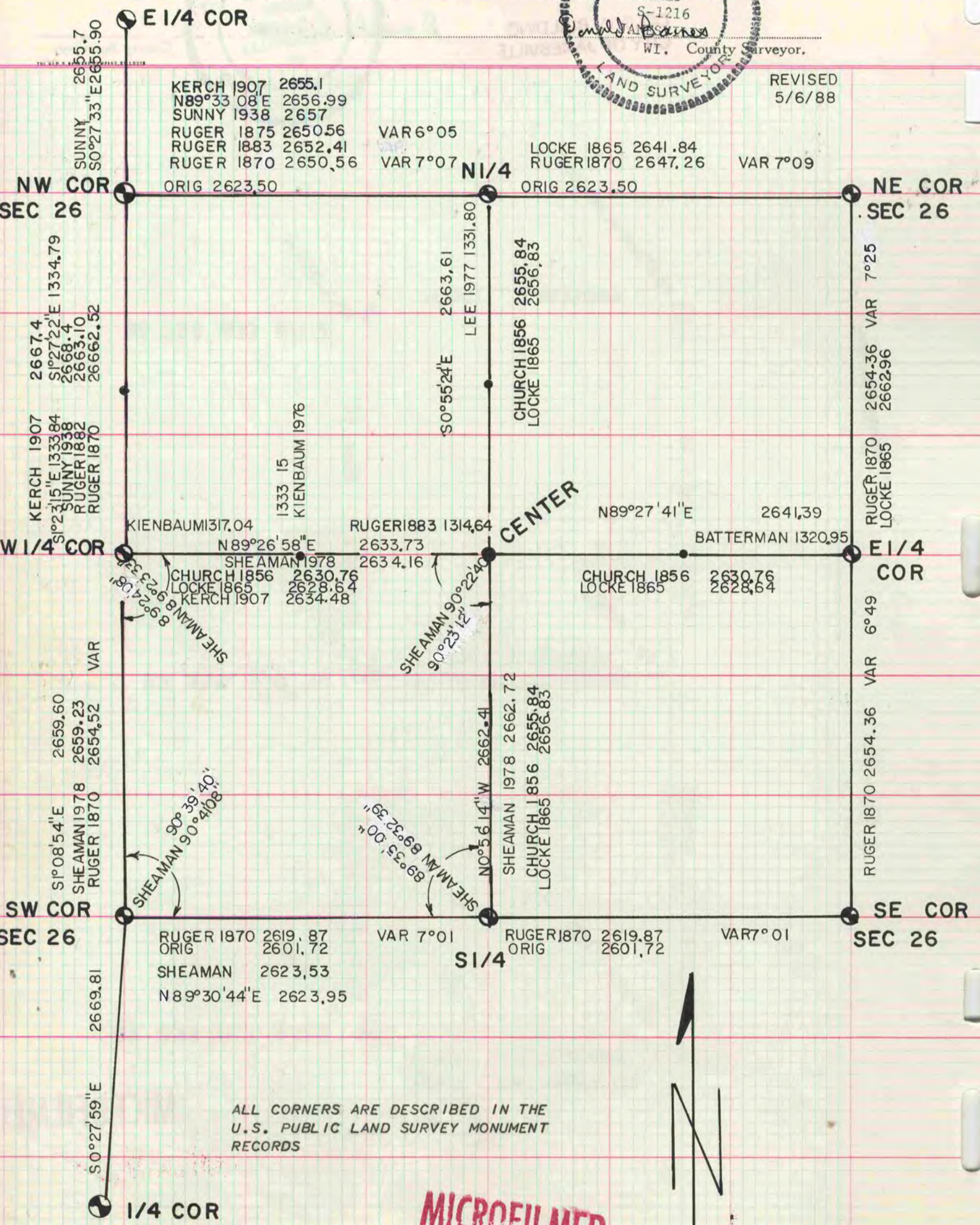
Of a Survey on Section 26 T R E. of the 4 P. M. in UNION Township

Rock County, Wisconsin, made APRIL the

I hereby certify that the following is a correct record of said survey



REVISED
5/6/88



ALL CORNERS ARE DESCRIBED IN THE
U.S. PUBLIC LAND SURVEY MONUMENT
RECORDS

MICROFILMED