

Of a Survey on Section 32, 33, 34 T 1 N. R. 13 E. of the 4 P. M. in TURTLE Township

Rock County, Wisconsin, made FEBRUARY the 18th 1991

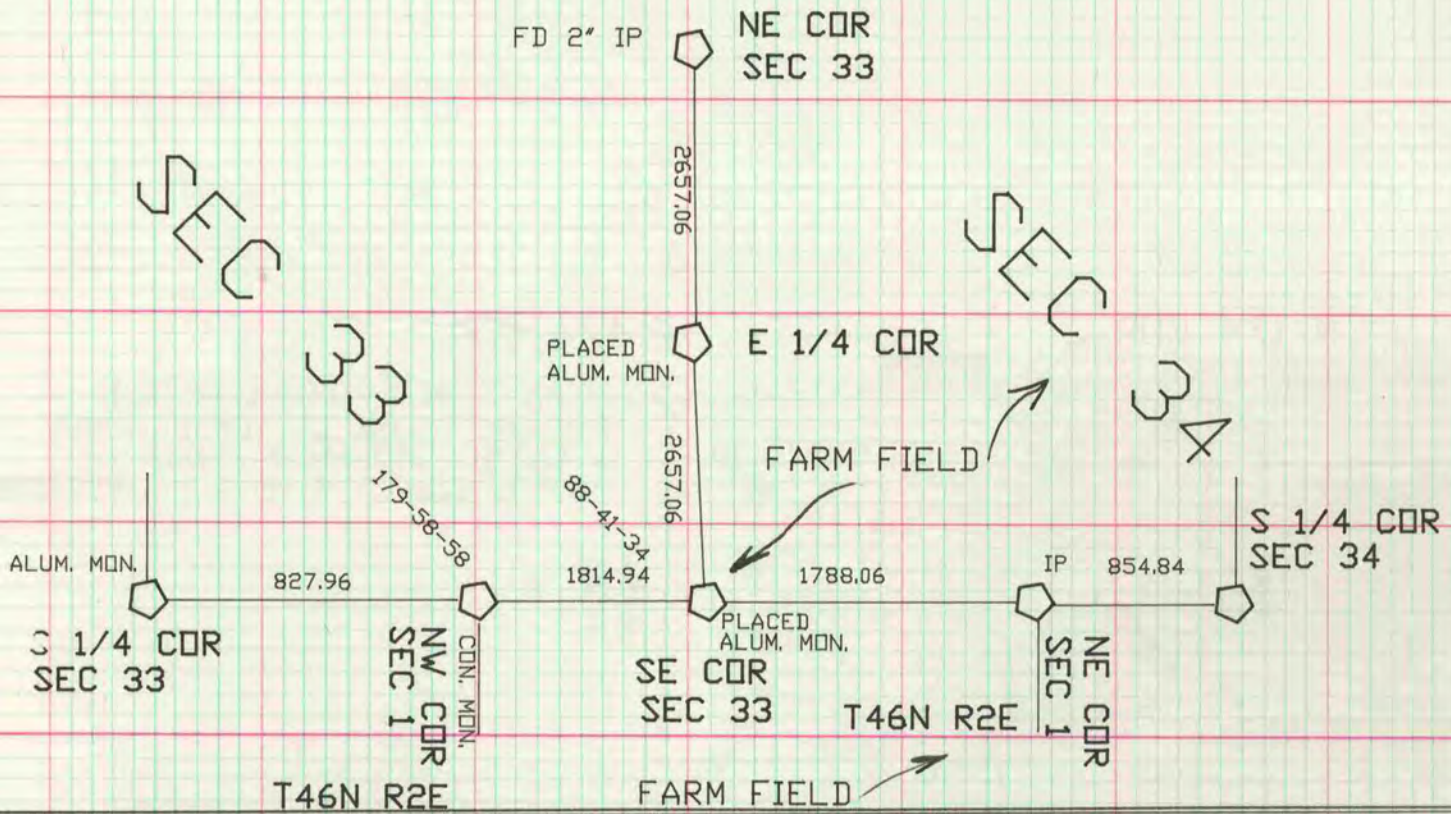
I hereby certify that the following is a correct record of said survey as made by me,
JING
CITY OF JANESVILLE

Ronald Barnes
County Surveyor.

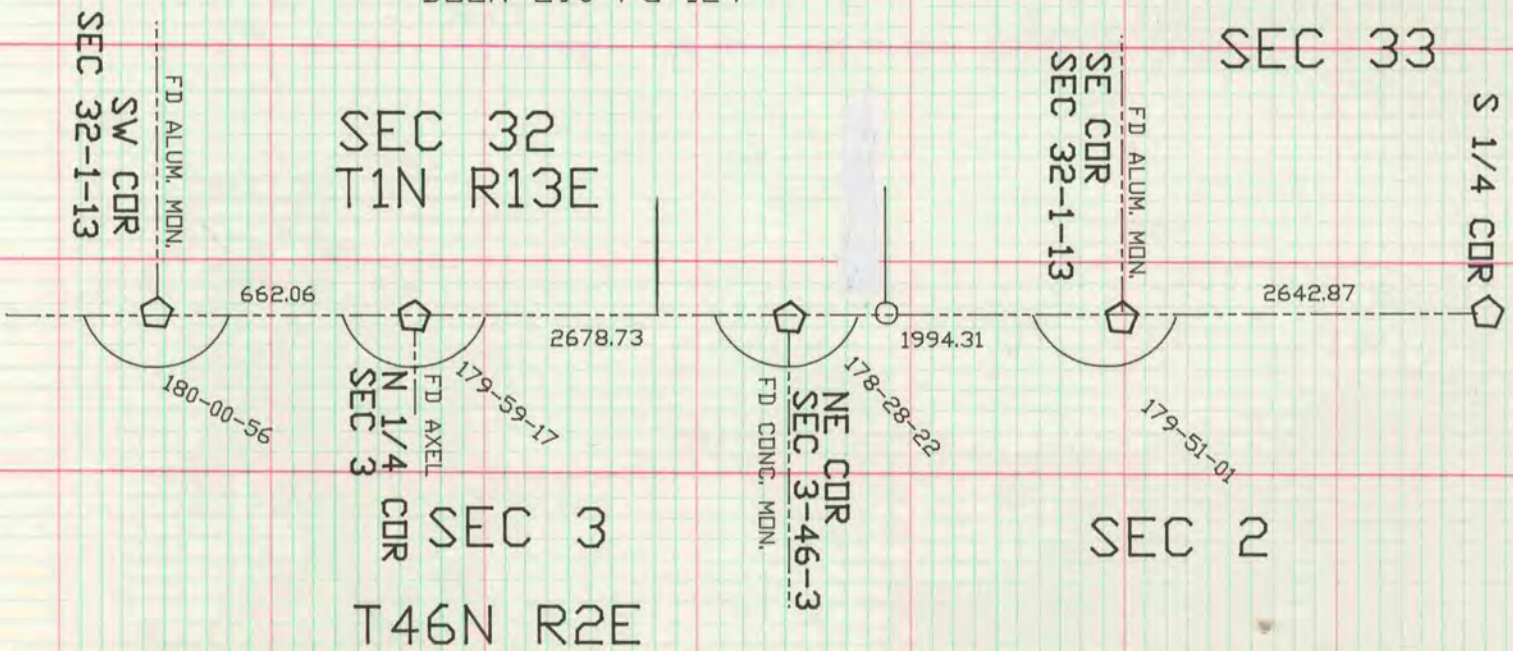
VOL 5 PG 539 IS CHANGED AS FOLLOWS:

E 1/4 COR SEC 33
FENCES & CORNER WERE DESTROYED.
PLACED ALUM. MON. 15' DEEP ON LINE WITH
NE & SE CORNERS AT SINGLE PROPORTIONATE DISTANCE.

SE COR SEC 33
FENCE & CORNER WERE DESTROYED.
PLACED ALUM. MON. 15' DEEP ON LINE WITH
THE NW & NE CORNERS OF SECTION 1 T46N R2E
AT SINGLE PROPORTIONATE DISTANCE BETWEEN THE S 1/4
CORNER OF SEC 33 & THE S1/4 CORNER OF SEC 34.



INFORMATION WAS SUPPLIED BY R.H. BATTERMAN & CO.
BOOK 290 PG 124



VOL 5 PG 456

THE N 1/4 COR SEC 1 T46N R2E SHOULD BE NW COR SEC 1