

# PLAT AND RECORD

√-3 469  
PG 461 BELOIT  
REC DAB

Of a Survey on Section 23, T 2N, R 12 E. of the 4 P. M. in Rock Township  
Rock County, Wisconsin, made December the 20th to 24th 1941.

I hereby certify that the following is a correct record of said survey as made by me.

**MICROFILMED**

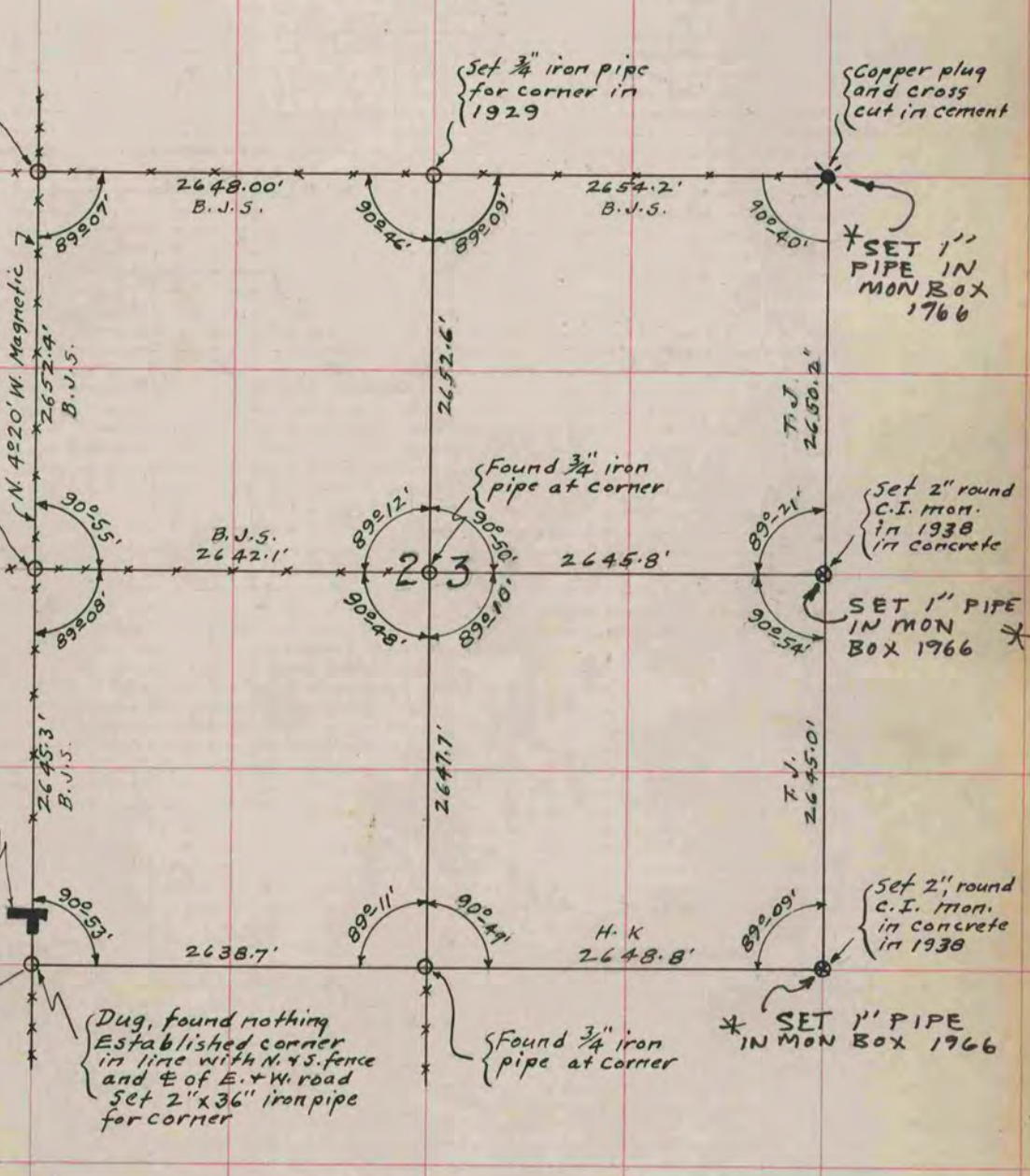
COUNTY BUILDING  
CITY OF JANESVILLE

*B. J. S.*  
County Surveyor.

\* COPIED FROM BELOIT REC 12/16/75 DAB

Found lime stone mon. at N.W. cor. Sec. 23. Set 2"x36" iron pipe monument in its place.

Dug, found nothing. Established  $\frac{1}{4}$  corner at cross fence. Set 2"x36" iron pipe monument for corner.



Dug, found nothing. Established corner in line with N. & S. fence and E. of E. & W. road. Set 2"x36" iron pipe for corner.

\* SET 1" PIPE IN MON BOX 1966