

PLAT AND RECORD

435

VOL. 5

COUNTY BUILDING
CITY OF JANESVILLE

Of a Survey on Section **35** T **4** R **13** E. of the 4 P. M. in **MILTON** Township

Rock County, Wisconsin, made **MAY** the **30** 19**78**

I hereby certify that the following is a correct record of said survey as made by me.

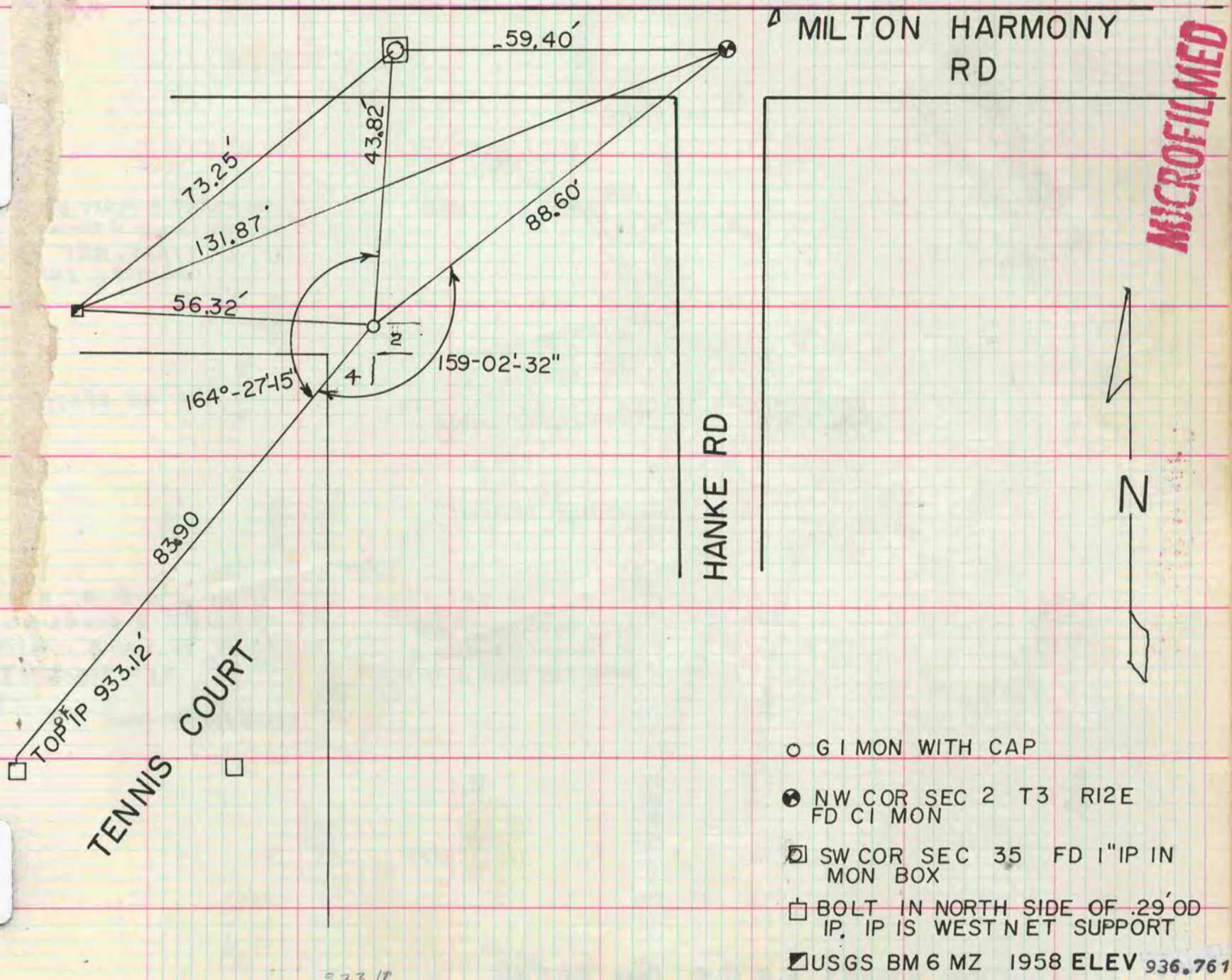
Donald Barnes

County Surveyor.

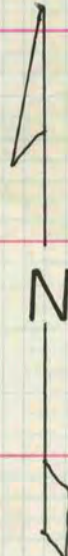


SW CORNER OF SEC 35

CORNERS WILL BE DESTROYED BY ROAD CONSTRUCTION.



MICROFILMED



933.12