

PLAT AND RECORD VOL. 5

83
V-5

COUNTY BUILDING
CITY OF JANESVILLE

Of a Survey on Section 17 T 4 R 14 E. of the 4 P. M. in LIMA Township

Rock County, Wisconsin, made AUGUST the 15th 1975

I hereby certify that the following is a correct record of said survey as made by me.

Donald A. Barnes

County Surveyor.

MICROFILMED

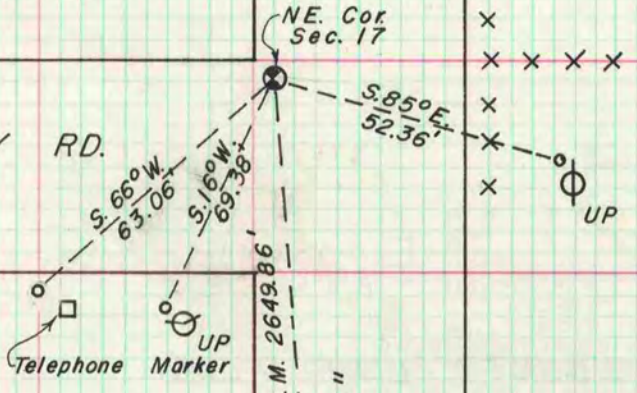


NE. Cor. Found 1.5 Feet Below Road Surface 2 Large Stones and Decaying Stake.

Accessories To Corners Are 1" X 2' Pipes

OCT 5, 1975 SET 18" IRON MONUMENT

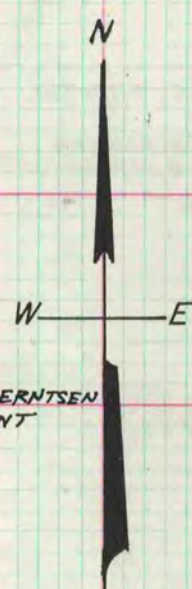
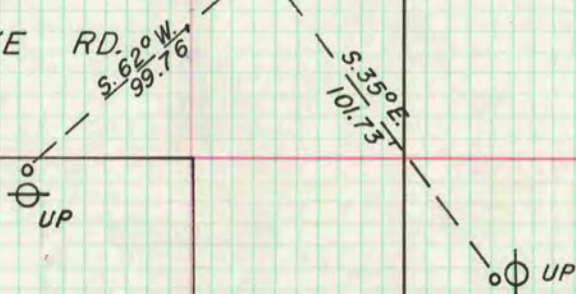
GODFREY RD.



E. 1/4 Found 2.5 Feet Below Road Surface 17X10X8 Limestone © 2 H.H.

OCT 5, 1975 SET BERNTSEN W-I-B MONUMENT

BOWERS LAKE RD.



OCT 6, 1975 SET 1/4" X 26" IRON PIPE

Found 3.5 Feet Below Road Surface H.H. 12 X 11 X 8 © 4 H.H.

GODFREY

ROAD

N 1/16 COR NE 1/4 SEC 17

