

PLAT AND RECORD

381

VOL. 5

Of a Survey on Section 13 T. 2 R. 14 E. of the 4 P. M. in BRADFORD Township
Rock County, Wisconsin, made DEC the 1 1977

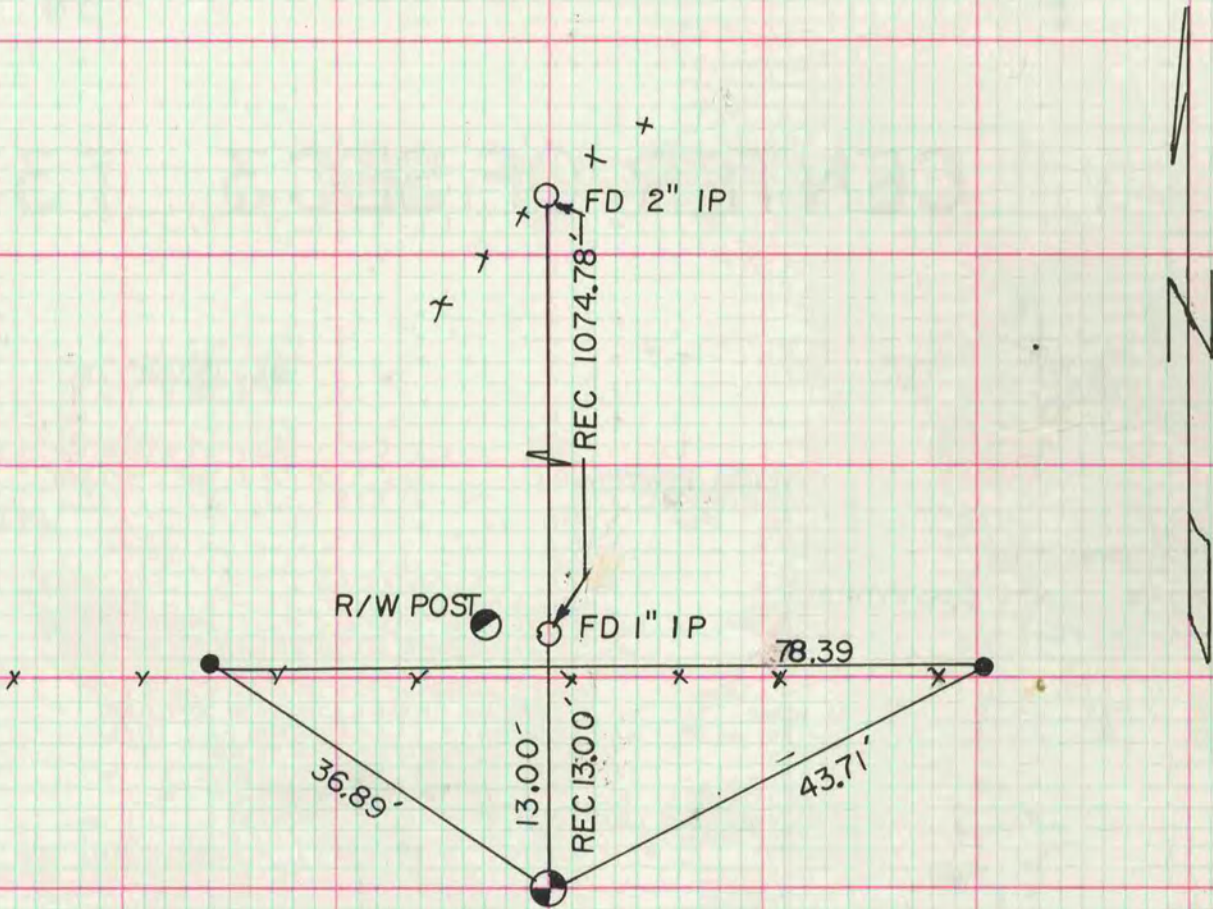
I hereby certify that the following is a correct record of said survey as made by me.

COUNTY BUILDING
CITY OF JANESVILLE



SE COR SEC 13

SET ALUMMON 16" DEEP ON LINE
WITH FOUND IP AT RECORD DISTANCE



● 1 1/4" X 24" IP

MICROFILMED