

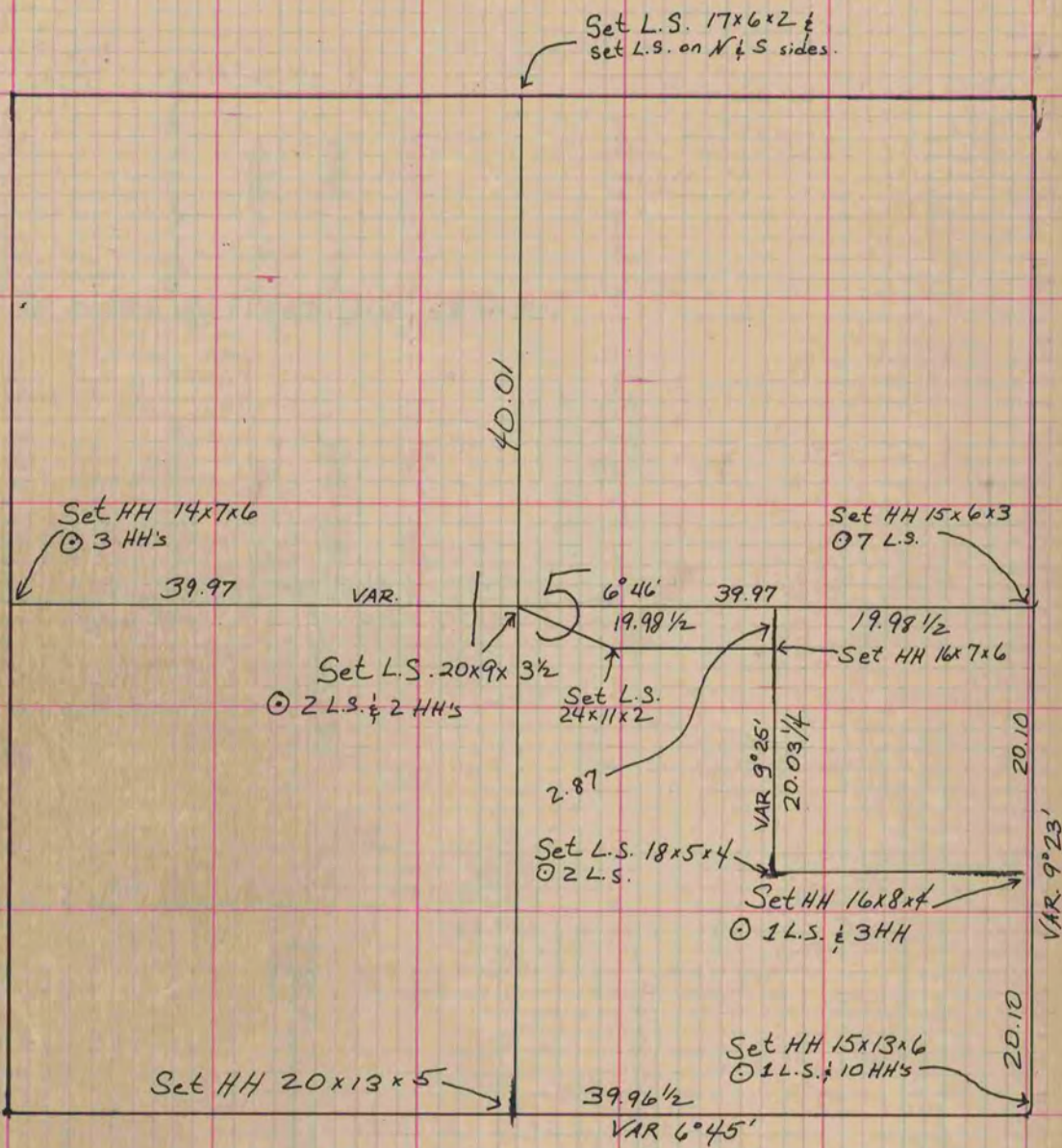
V-1 MICROFILMED PLAT AND RECORD

Of a Survey on Section 15 T 2 N R 14 E. of the 4 P. M. in BRADFORD Township
Rock County, Wisconsin, made OCTOBER the 18 19 1860

I hereby certify that the following is a correct record of said survey as made by me.

COUNTY BUILDING
CITY OF JANESVILLE

(Signed) EDWARD RUGER
County Surveyor.



COPIED FROM P. 154, Vol. 1, COUNTY SURVEYOR'S RECORD

THIS PAGE COPIED FROM Beloit record
12/9/75 G. Q.