

# PLAT AND RECORD

**MICROFILMED**

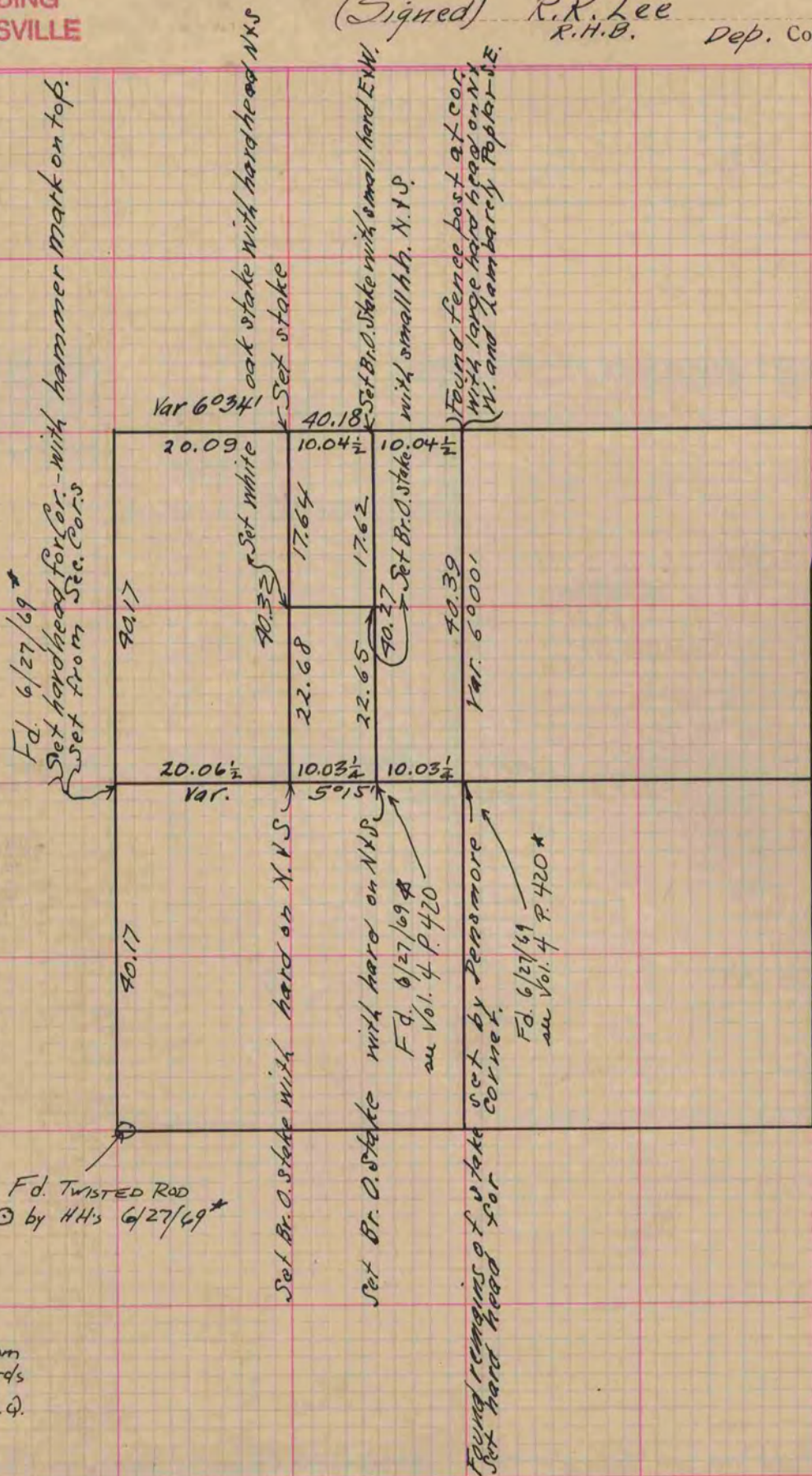
Of a Survey on Section 33 T 2 R 14 E. of the 4 P. M. in Bradford Township

Rock County, Wisconsin, made June the 9<sup>th</sup> 10<sup>th</sup> 1869

I hereby certify that the following is a correct record of said survey as made by me.

COUNTY BUILDING  
CITY OF JANESVILLE

(Signed) R.K. Lee  
R.H.B. Dep. County Surveyor.



\* Copied from  
Beloit records  
12/9/75 G.Q.

Copied from Page 281 Vol. 1. Original County Surveyors Record