

PLAT AND RECORD

COUNTY BUILDING
CITY OF JANESVILLE

Of a Survey on Section 31 T 4N, R 14 E. of the 4 P. M. in LIMA Township

Rock County, Wisconsin, made MAY the 1 st. 1962

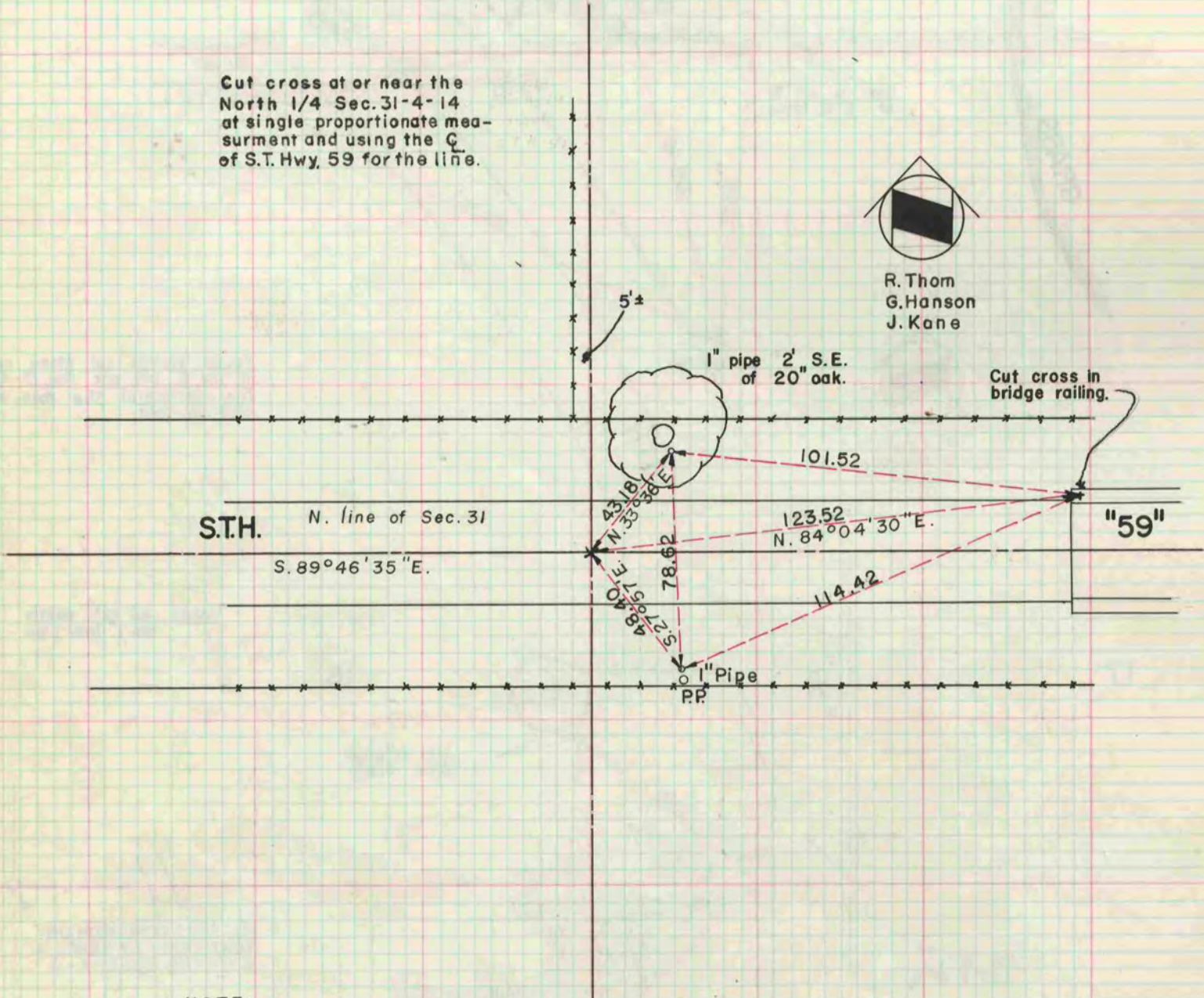
I hereby certify that the following is a correct record of said survey as made by me.

MICROFILMED

R. W. B. Johnson

County Surveyor.

Cut cross at or near the
North 1/4 Sec. 31-4-14
at single proportionate mea-
surment and using the C
of S.T. Hwy. 59 for the line.



R. Thom
G. Hanson
J. Kane

NOTE:
All bearings are True Bearings
See page 123