

Of a Survey on Section 22 T 1 R 10 E. of the 4 P. M. in AVON Township

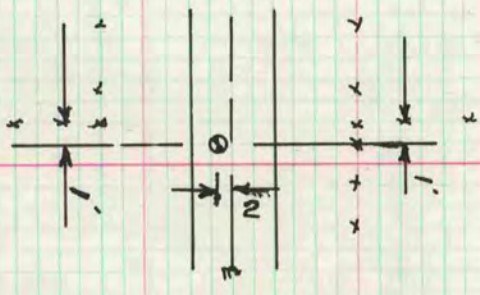
Rock County, Wisconsin, made JULY 31 1979

I hereby certify that the following is a correct record of said survey as made by me,



W 1/4 COR

FORMER COUNTY SURVEYOR DUG AND FOUND NOTHING. SET ALUM. MON. AT THE INTERSECTION OF A LINE FROM THE NW CORNER AND THE W 1/16th CORNER OF THE NW 1/4 AND A LINE FROM THE CENTER AND THE S 1/16th CORNER OF THE NW 1/4. THIS IS IN HARMONY WITH OCCUPATION AND RUGER'S SURVEY.



W 1/16th COR OF THE NW 1/4

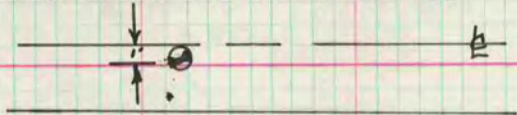
DUG AND FOUND STAKE ① & LIMESTONES. SET ALUM MON

**MICROFILMED**



N 1/4 COR

FORMER COUNTY SURVEYOR DUG AND FOUND NOTHING. SET ALUM MON ON LINE WITH THE CENTER AND THE S 1/4 CORNER OF SECTION 22 AT THE PRORATED DISTANCE FROM THE CENTER. THIS IS IN HARMONY WITH OCCUPATION AND THE PRORATED DISTANCE TO THE NW CORNER.



NE COR

FORMER COUNTY SURVEYOR DUG AND FOUND NOTHING. SET ALUM MON ON LINE WITH FENCE TO THE NORTH AND SOUTH AND THE CENTER OF THE ROAD.

