

Of a Survey on Section 11, 12 T 3 R 10 E. of the 4 P. M. in MAGNOLIA Township  
Rock County, Wisconsin, made JULY 29 1980

I hereby certify that the following is a correct record of a survey as made by me.

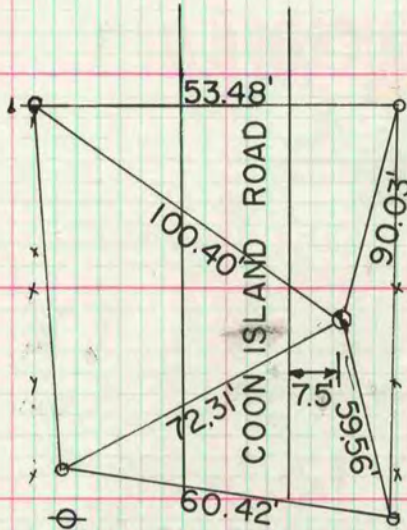


County Surveyor.

N 1/4 COR SEC 12

DUG AND FOUND NOTHING. SET ALUM MON ON LINE WITH THE NE & NW CORNERS AT SINGLE PROPORTIONATE DISTANCE.

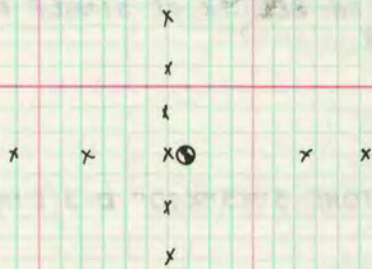
MICROFILMED



SET ALUM. MON. 7-29-80  
o-3/8" x 32" IRON BOLT  
PLACED 3/8" x 32" IRON  
BOLT NEXT TO ALUM. MON.

S 1/4 COR SEC 11

DUG AND FOUND STAKE O & HW. REPLACED STAKE WITH ALUM MON



N 1/4 SEC 11

AREA WAS DISTURBED. DUG AND FOUND NOTHING. SET ALUM MON 15" DEEP ON LINE WITH THE NE AND NW CORNERS OF SEC 11 AT SINGLE PROPORTIONATE DISTANCE.