

MICROFILMED

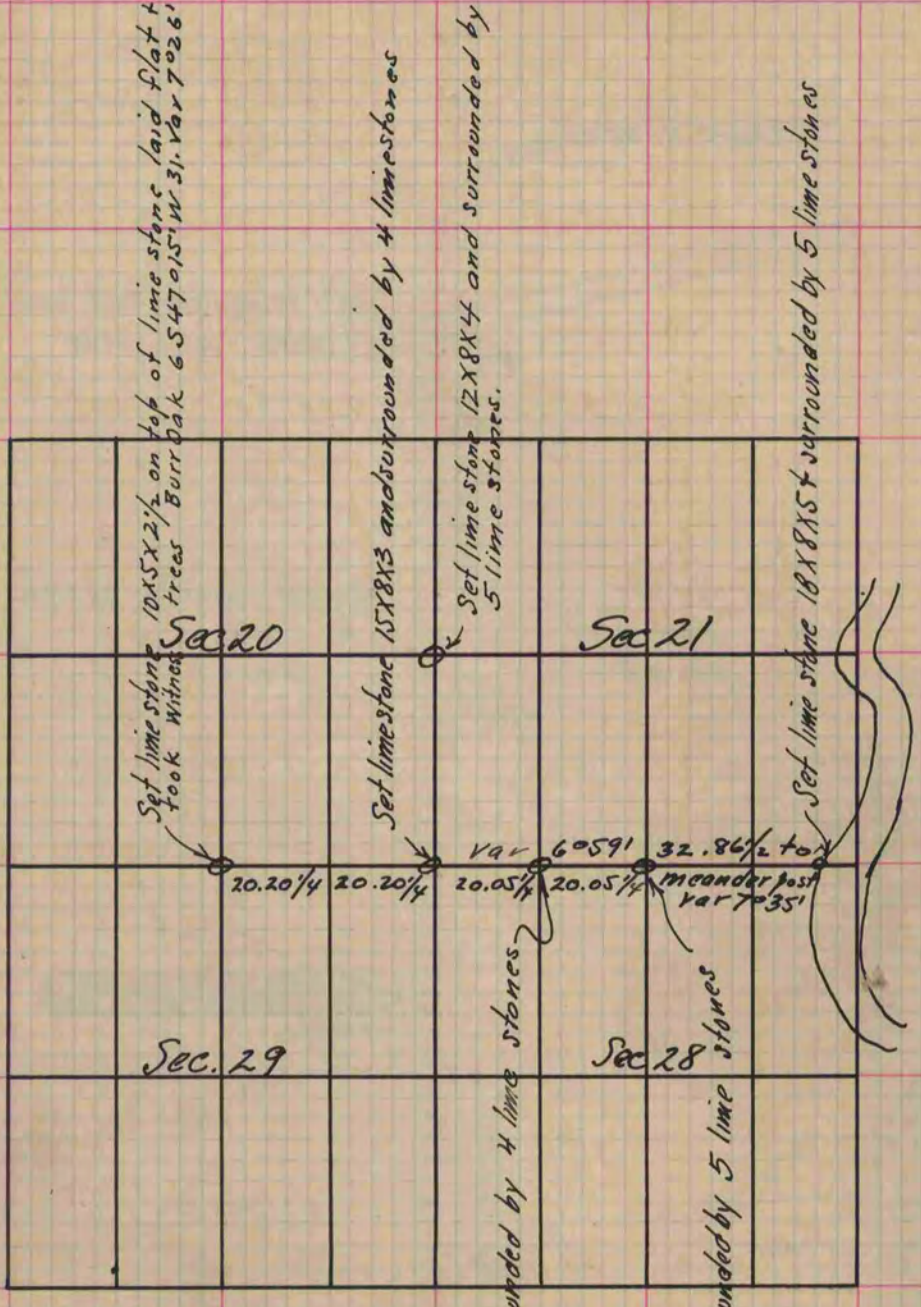
PLAT AND RECORD

Of a Survey on Sections 20-21-28+29 T 2 R 12 E. of the 4 P. M. in Rock Township
Rock County, Wisconsin, made September the 14th 1860

I hereby certify that the following is a correct record of said survey as made by me.

COUNTY BUILDING
CITY OF JANESVILLE

(Signed) Edward Roger
R.H.B. County Surveyor.



The corners of Secs 20-21-28 and 29 being gone it was put in from the four adjacent quarter posts.

Copied From Page 146 Vol. 1. Original County Surveyors Record