

PLAT AND RECORD

MICROFILMED

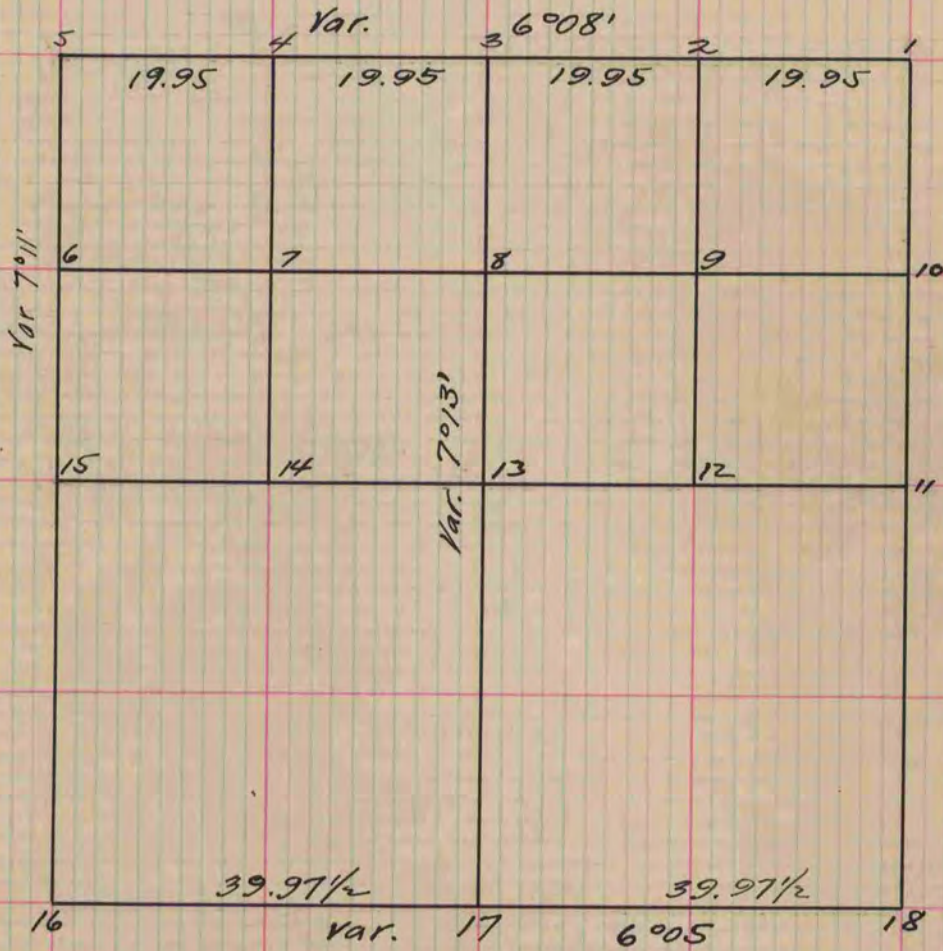
COUNTY BUILDING
CITY OF JANESVILLE

Of a Survey on Section 1 T 2 R 13 E. of the 4 P. M. in La Prairie Township

Rock County, Wisconsin, made May the 25th 1859

I hereby certify that the following is a correct record of said survey as made by me.

(Signed) Edward Ruger
R.H.B. County Surveyor.



- Fig. 1. Surrounded post by 4 Limestone and took bearing Stones
Limestone 16 inches by 9 broad by 2 thick. S. 55°04' E. 55 var 6°50'
- Limestone 16 " " 8 " " " " S. 48°08' W. 55 " " "
- Put in North 1/4 post by Sec. Corners & surrounded post by 3 limestones
- Fig. 5 Surrounded post by 4 Limestones + one hard head and planted witness
Stones. Limestone 14x8x4 - above bench - S. 73°30' E. 54. Limestone 10x9
S. 76°30' W. 55 Var. 6°45'
- Fig. 8 Surrounded post by 4 Limestones
- " 10 Surrounded post by 4 Limestones
- X Put in East 1/4 post (Fig. 11) by Sec. Corners and surrounded post by 4 Limestones
- Fig. 13 surrounded post by 4 Limestones
- " 15 " " " " "
- " 16 " " " " "
- " 17 " " " " "

The East line of the section and the line through the Centre North & South were run by Forward and back Sights on account of local attraction

Copied from Page 112 Vol. 1. County Surveyors Record

Afterwards found 1/4 post