

PLAT AND RECORD

329

VOL. 5

Of a Survey on Section 6, 16 T. 3 N. R. 10 E. of the 4 P. M. in MAGNOLIA Township

Rock County, Wisconsin, made SEPT the 13 1977

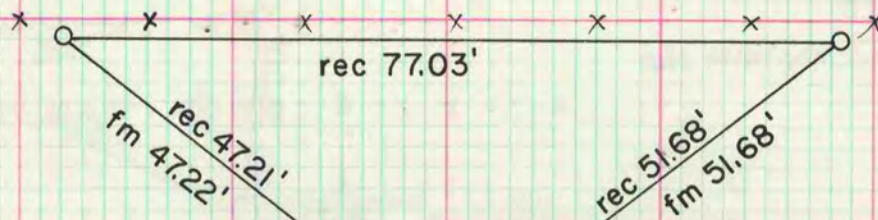
I hereby certify that the following is a correct record of said survey as made by me.

COUNTY BUILDING
CITY OF JANESVILLE



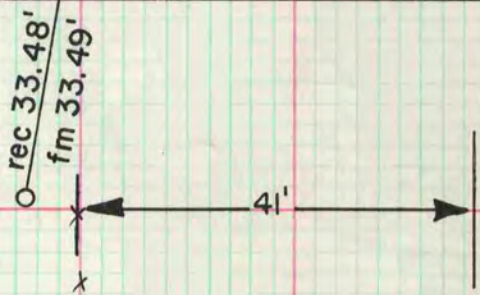
NE cor sec 6-3-10

fd pk and ties. set alum mon on top of stone of record



Milbrandt Road

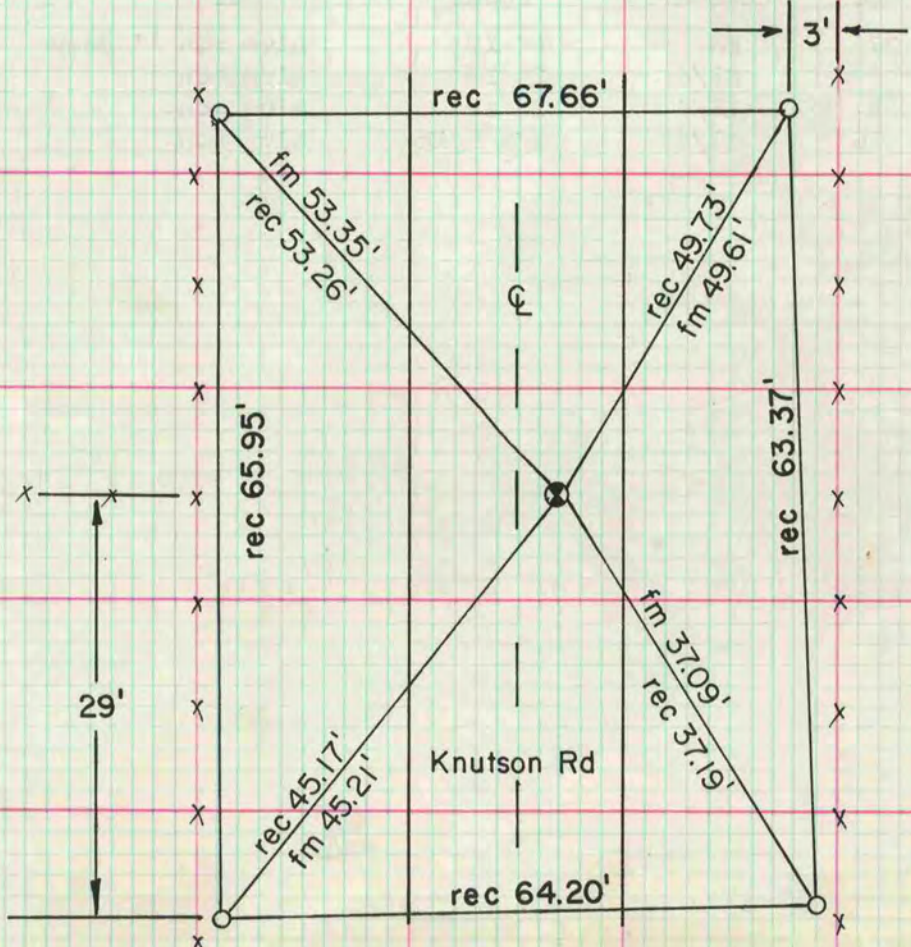
O = fd 1" I.P.



E 1/4 cor sec 16-3-10

fd 1" I.P. 0.3" deep.

fm = field measurement to FD IP .3 DEEP
set alum mon at rec distance
from fd reference pipes



O = fd 1" ref. pipe

MICROFILMED