

MICROFILMED

PLAT AND RECORD

395
V-2

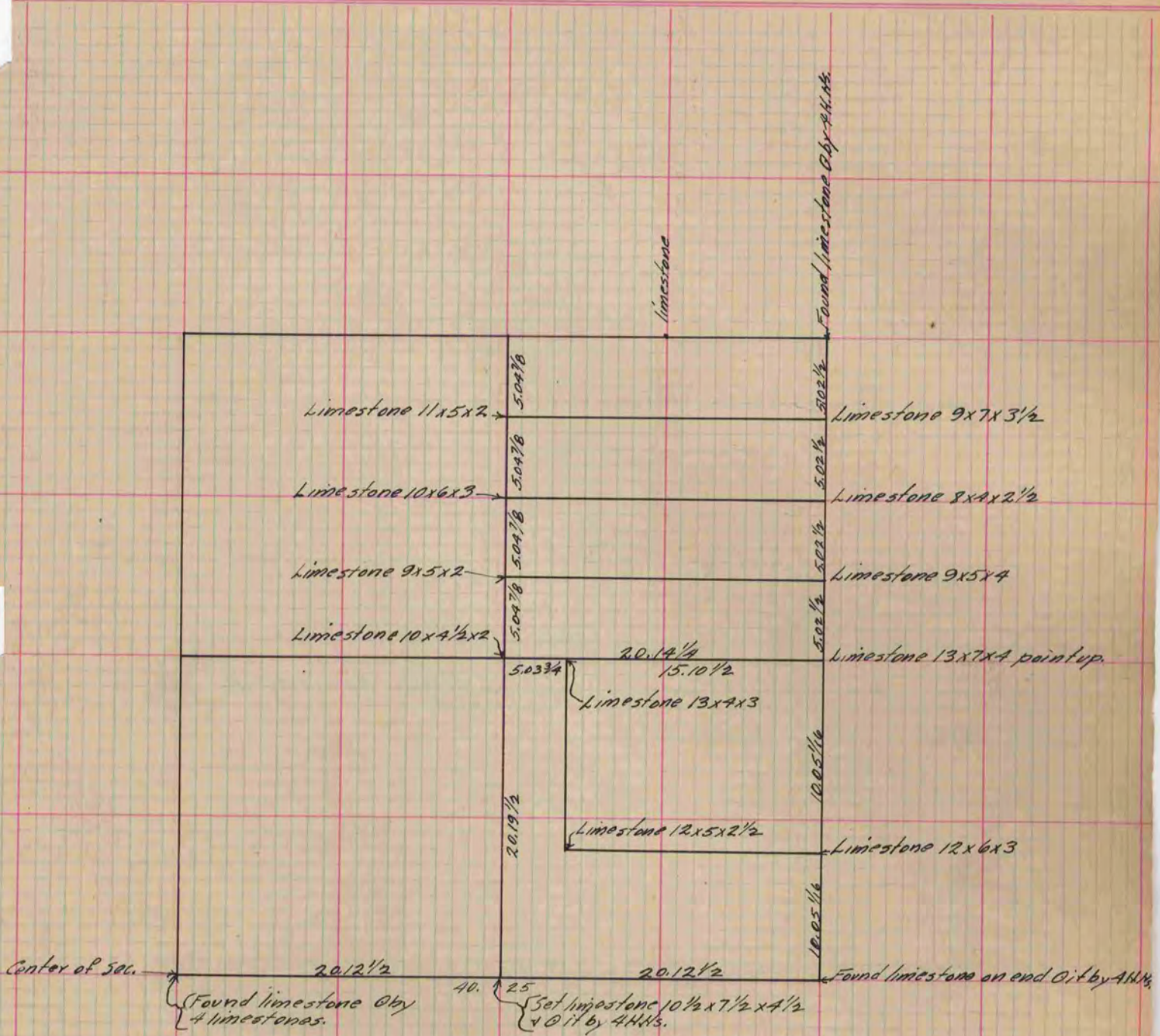
COUNTY BUILDING
CITY OF JANESVILLE

Of a Survey on, Section ^{NE 1/4} 34 T 3 R 12 E. of the 4 P. M. in Janesville Township

Rock County, Wisconsin, made March the 31st 1882

I hereby certify that the following is a correct record of said survey as made by me.

(Signed) Edward Ruger
RHB County Surveyor.



Copied from P. 319 Vol. 2 County Surveyors Record.