

PLAT AND RECORD

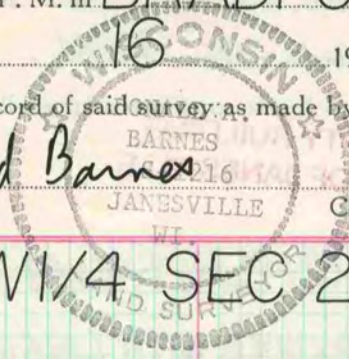
VOL. 5

Of a Survey on Section 23 T 2 R 14 E. of the 4 P. M. in BRADFORD Township
Rock County, Wisconsin, made NOV the 16 19 77

I hereby certify that the following is a correct record of said survey as made by me.

COUNTY BUILDING
CITY OF JANESVILLE

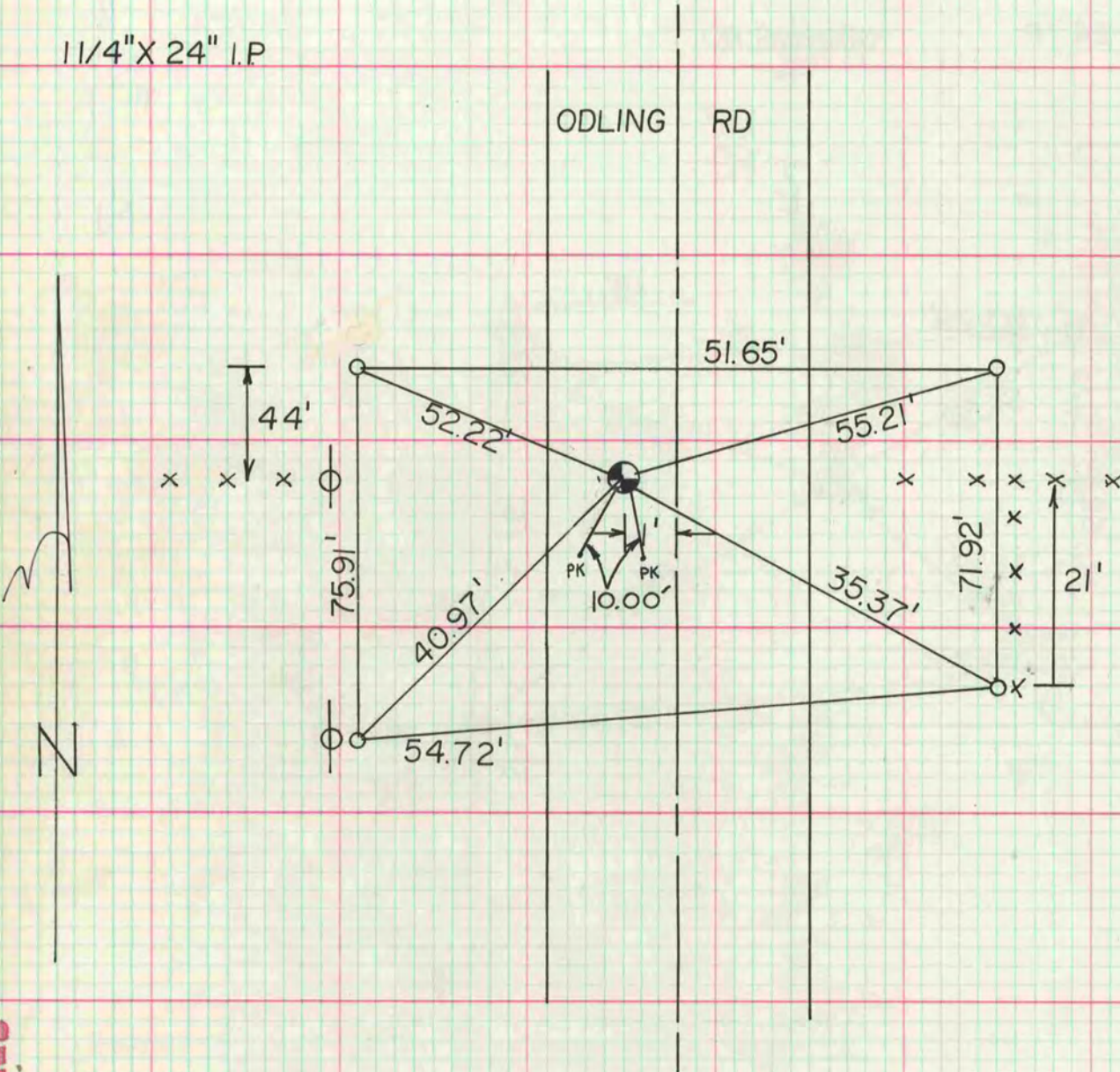
Donald Barnes



County Surveyor.

N 1/16 COR SW 1/4 SEC 23 T2 R14E

FD HH 16"X9"X9" WITH LIMESTONE ON N&S SIDE 1.5' DEEP
SET 1 1/4" X 24" I.P.



MICROFILMED