

PLAT AND RECORD

237

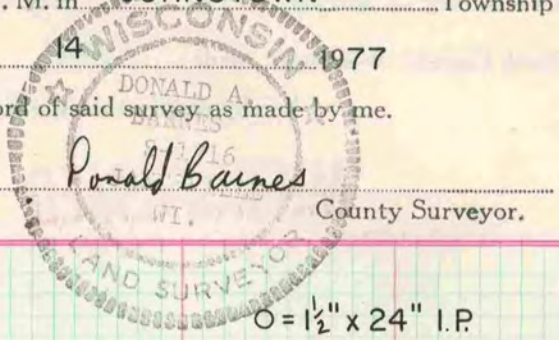
COUNTY BUILDING
CITY OF JANESVILLE

V. 5

Of a Survey on Section 35 T. 3 N. R. 14 E. of the 4 P. M. in JOHNSTOWN Township

Rock County, Wisconsin, made JAN the 14 1977

I hereby certify that the following is a correct record of said survey as made by me.

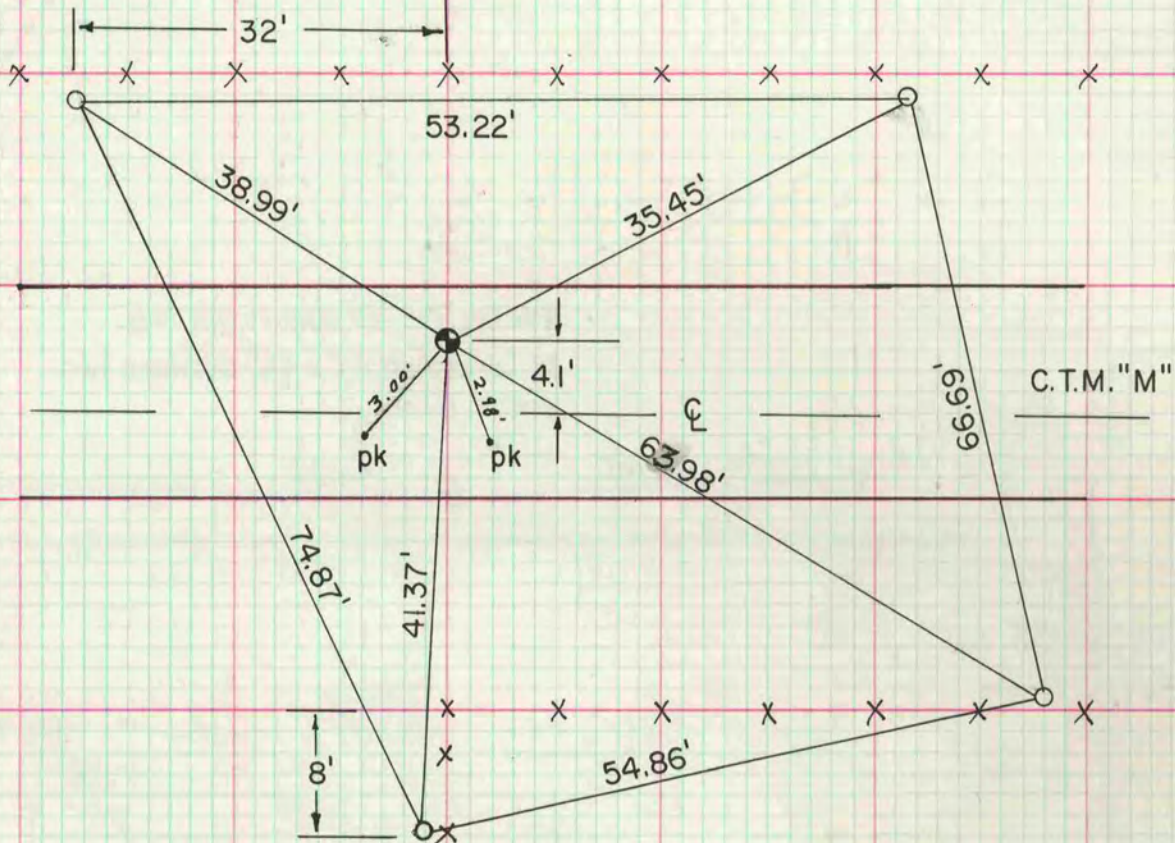


MICROFILMED

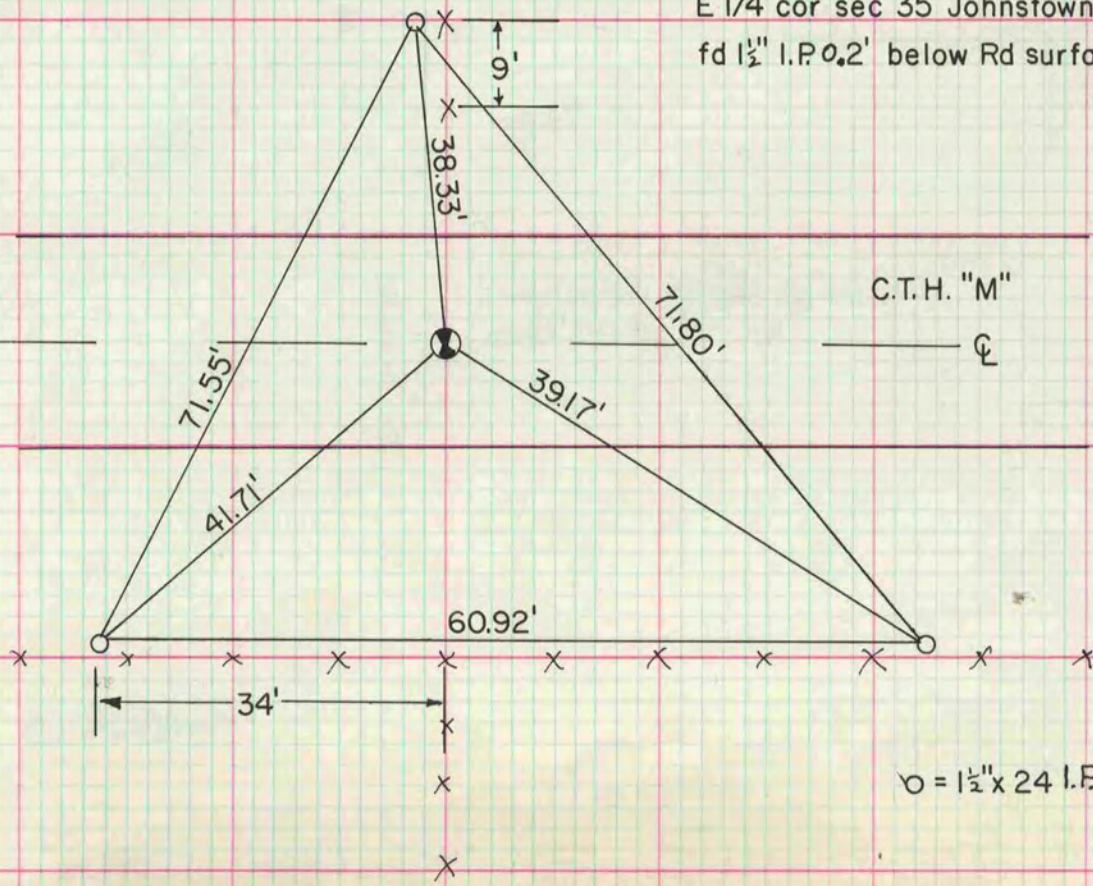
THE GEO. D. BARNARD COMPANY, ST. LOUIS

W 1/4 cor sec 35 Johnstown Twp
FP cap monument 0.3' below Rd surface

O = 1 1/2" x 24" I.P.



E 1/4 cor sec 35 Johnstown Twp
fd 1 1/2" I.P. 0.2' below Rd surface



O = 1 1/2" x 24 I.P.