

MICROFILMED PLAT AND RECORD

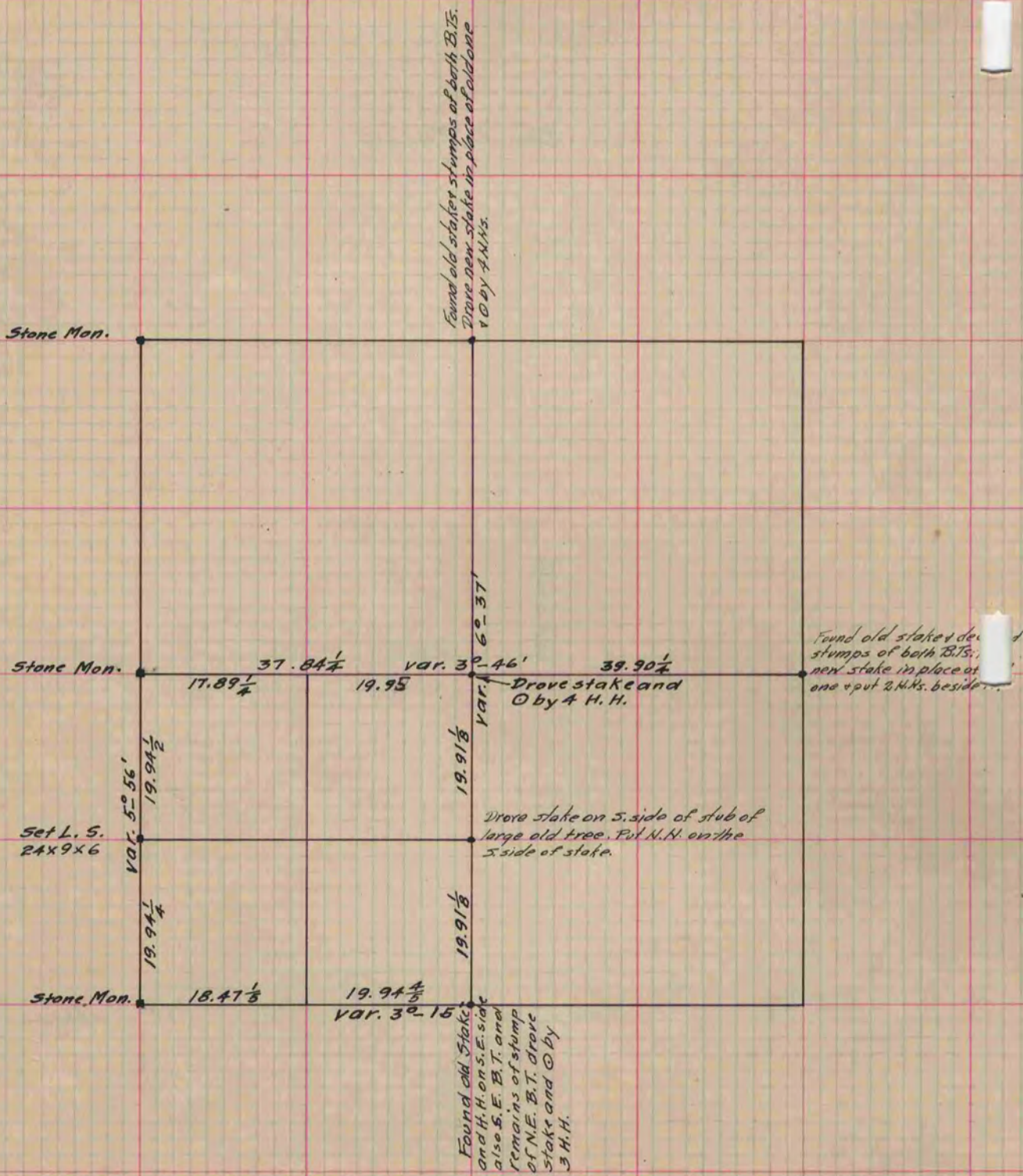
Of a Survey on Section 7 T 3 R 14 E. of the 4 P. M. in *Johnstown* Township
Rock County, Wisconsin, made *May* the *3rd + 4th* 1883

I hereby certify that the following is a correct record of said survey as made by me.

COUNTY BUILDING
CITY OF JANESVILLE

(Signed) *Edward Ruger*
R. H. B.

County Surveyor.



Copied from P. 288 Vol. 2 County Surveyor's Record.